

\$318,900 - 4351 Redbay Ct, Pace

MLS® #639407

\$318,900

4 Bedroom, 2.00 Bathroom, 1,787 sqft
Residential on 0 Acres

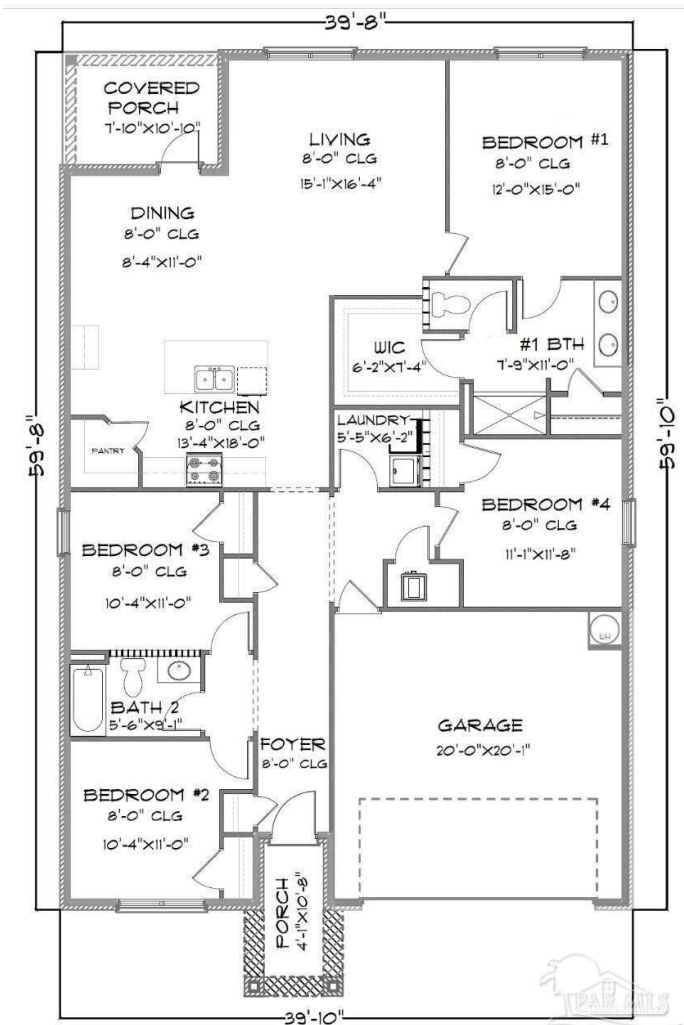
Woodlands, Pace, FL

Experience the charm of the Woodlands! If you've always yearned for an outdoor lifestyle, your dreams can come true with the proximity of Navarre and Pensacola Beach. Discover the Cali plan, a delightful 4-bedroom, 2-bathroom home boasting a covered patio and a 2-car garage. The open kitchen is equipped with sleek stainless-steel appliances, a spacious island/bar for additional seating, and ample counter space. Bedroom 1 offers a generous layout, complemented by an exquisite en-suite bathroom featuring a double vanity, a sizable shower, and a walk-in closet. This home includes a Smart Home Technology package as standard. With the touch panel, you can effortlessly control your lighting, thermostat, front door, and more. Located in the Woodlands, you'll enjoy convenient access to all your needs just a short drive away. Come and explore the incredible offerings of this remarkable community firsthand!

Built in 2024

Essential Information

| | |
|----------------|-----------|
| MLS® # | 639407 |
| Price | \$318,900 |
| Bedrooms | 4 |
| Bathrooms | 2.00 |
| Full Baths | 2 |
| Square Footage | 1,787 |
| Acres | 0.13 |



| | |
|------------|-------------------------|
| Year Built | 2024 |
| Type | Residential |
| Sub-Type | Single Family Residence |
| Style | Craftsman |
| Status | Active |

Community Information

| | |
|-------------|----------------|
| Address | 4351 Redbay Ct |
| Subdivision | Woodlands |
| City | Pace |
| County | Santa Rosa |
| State | FL |
| Zip Code | 32571 |

Amenities

| | |
|----------------|--|
| Utilities | Cable Available |
| Parking Spaces | 2 |
| Parking | 2 Car Garage, Front Entrance, Garage Door Opener |
| # of Garages | 2 |
| Has Pool | Yes |
| Pool | None |

Interior

| | |
|-------------------|---|
| Interior Features | Baseboards, High Ceilings, Recessed Lighting |
| Appliances | Electric Water Heater, Built In Microwave, Dishwasher, Disposal |
| Heating | Central |
| Cooling | Central Air |
| # of Stories | 1 |
| Stories | One |

Exterior

| | |
|-----------------|-------------------------------|
| Lot Description | Central Access |
| Windows | Double Pane Windows, Shutters |
| Roof | Composition |
| Foundation | Slab |

School Information

| | |
|------------|-----------|
| Elementary | Pea Ridge |
| Middle | Avalon |

High Pace

Additional Information

Zoning Res Single
HOA Fees 250
HOA Fees Freq. Annually

Listing Details

Listing Office D R Horton Realty of NW Florida, LLC

Copyright© 2024 by the Multiple Listing Service of the Pensacola Association of REALTORS®. This information is believed to be accurate but is not guaranteed. Subject to verification by all parties. This data is copyrighted and may not be transmitted, retransmitted, copied, framed, repurposed, or altered in any way for any other site, individual and/or purpose without the express written permission of the Multiple Listing Service of the Pensacola Association of REALTORS®. Florida recognizes single and transaction agency relationships. Information Deemed Reliable But Not Guaranteed. Any use of search facilities of data on this site, other than by a consumer looking to purchase real estate, is prohibited.