

\$3,300,000 - 34 Beachside Dr, SANTA ROSA BEACH

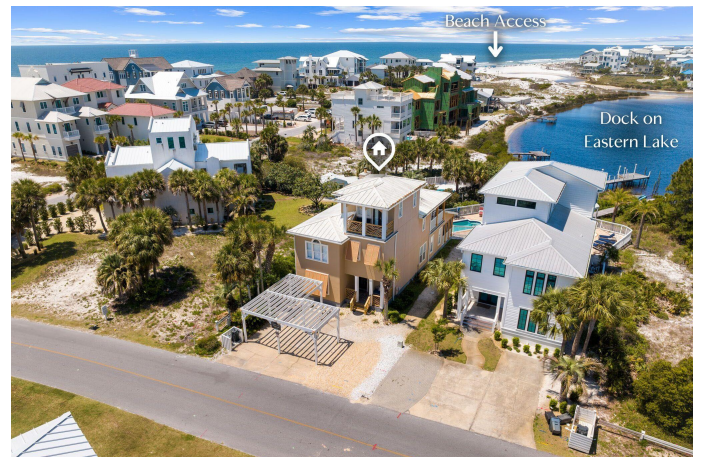
MLS® #948166

\$3,300,000

5 Bedroom, 4.00 Bathroom, 2,869 sqft
Residential on 0 Acres

SUMMER DREAM, SANTA ROSA BEACH, FL

Enjoy pristine views of Eastern Lake and the Gulf from this waterfront residence in Seagrove. Perfectly positioned on the southeast portion of the lake, this beautiful 3 story home boasts westward facing sunset views combined with very close proximity to multiple beach accesses. The private pool area flows seamlessly to the shared dock to create a true backyard oasis. This secluded location off Beachside Dr in Seagrove is close to the end of the road with lower traffic count generating a very laid-back feel. Just 500' feet to the south is a direct beach access to the water. The primary beach access is just over 900' to the end of San Roy where the county has recently assembled over 6 acres of public beach access encompassing the Eastern Lake outfall. The 5 bedroom/4 bath home possesses a very accommodating floor plan designed to sleep a multitude of guests. The main level has one bedroom, one bath, an open floorplan kitchen/dining/living area, and a screened back porch. The second story has 3 bedrooms, including the primary suite where you will find views of the Gulf and lake plus a private covered porch. The 3rd story is set up as bunk room space that makes way to an exterior balcony. Coastal Dune Lakes are a rare natural phenomena that only occur in a handful of locations around the globe, including New Zealand, Australia, Madagascar and South Walton, Florida. Eastern Lake is one of the largest on the 30A corridor and one of a few that allow motorized boats on the



lake. Eastern Lake is home to a diverse ecosystem making it great for fishing, boating, or simply enjoying the views. Seagrove is centrally located in the middle of 30A, offering close access to Seaside, The Big Chill, and a diverse portfolio of restaurants and shopping.

Built in 2002

Essential Information

MLS® #	948166
Price	\$3,300,000
Bedrooms	5
Bathrooms	4.00
Full Baths	4
Square Footage	2,869
Acres	0.19
Year Built	2002
Type	Residential
Sub-Type	Detached Single Family
Style	Beach House
Status	Active

Community Information

Address	34 Beachside Dr
Area	30A East
Subdivision	SUMMER DREAM
City	SANTA ROSA BEACH
County	WALTON
State	FL
Zip Code	32459

Amenities

Amenities	Dock
Utilities	Electric Available, Public Water Available, TV Cable Available
Is Waterfront	Yes
Waterfront	Coastal Dune Lakes
Has Pool	Yes
Pool	Pool - In-Ground, Private, Community

Interior

Interior Features	Breakfast Bar, Ceiling Crwn Molding, Furnished - Some, Washer/Dryer Hookup, Window Treatment All
Appliances	Dishwasher, Disposal, Dryer, Microwave, Refrigerator W/Ice Maker, Washer
Cooling	A/C: Two Or More, Ceiling Fans
# of Stories	3

Exterior

Exterior	Siding Stucco
Exterior Features	Balcony, Fenced Back Yard, Pool - In-Ground, Porch Covered, Deck Enclosed
Lot Description	Within 1/2 Mile Of Water

School Information

Elementary	Dune Lakes
Middle	EMERALD COAST
High	SOUTH WALTON

Additional Information

Days on Website	33
Zoning	Residential Single Family
HOA Fees	0.00

Listing Details

Listing Office	Compass
----------------	---------

DISCLAIMER: Information Deemed Reliable but not guaranteed. The information being provided is for consumers' personal, non-commercial use and may not be used for any purpose other than to identify prospective properties consumers may be interested in purchasing.All listings are provided courtesy of the Emerald Coast Association of Realtors, Copyright2024, All rights reserved.