

# \$1,450,000 - Lot13 Gulf Point Rd, SANTA ROSA BEACH

MLS® #947983

**\$1,450,000**

Bedroom, Bathroom, 6,098 sqft

Land on 0 Acres

BLUE MOUNTAIN BEACH, SANTA ROSA BEACH,

Lot south of HWY 30A in very desirable Blue Mountain Beach Subdivision. This lot fronts 2 roads so home can be designed with additional options. Easy beach access just steps away and also just a bike ride to restaurants ,shopping etc. Quiet area on west end of HWY 30A, Great opportunity to build the beach home you always dreamed of having.

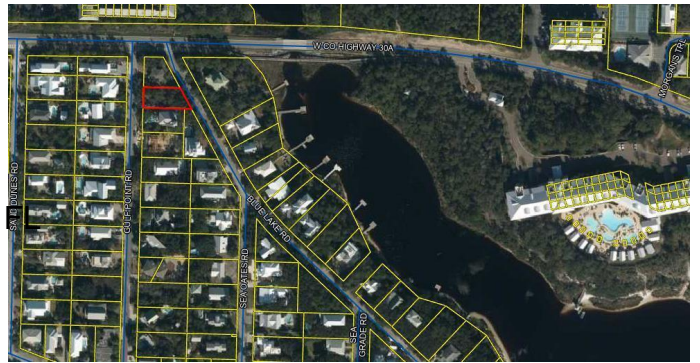
## Essential Information

MLS® #	947983
Price	\$1,450,000
Square Footage	6,098
Acres	0.14
Type	Land
Sub-Type	Residential Land
Status	Active

## Community Information

Address	Lot13 Gulf Point Rd
Area	30A West
Subdivision	BLUE MOUNTAIN BEACH
City	SANTA ROSA BEACH
County	WALTON
State	FL
Zip Code	32459

## Amenities



Utilities

Electric Available, Public Water Available, Sewer Available, TV Cable Available

School Information

Elementary

VAN R. BUTLER

Middle

EMERALD COAST

High

SOUTH WALTON

Additional Information

Days on Website

25

Zoning

Residential Single Family

HOA Fees

0.00

Listing Details

Listing Office

Corcoran Reverie SRB

DISCLAIMER: Information Deemed Reliable but not guaranteed. The information being provided is for consumers' personal, non-commercial use and may not be used for any purpose other than to identify prospective properties consumers may be interested in purchasing.All listings are provided courtesy of the Emerald Coast Association of Realtors, Copyright2024, All rights reserved.