

# \$450,000 - 231 Somerset Bridge Rd Unit 1110, SANTA ROSA BEACH, FL

MLS® #946913

## \$450,000

2 Bedroom, 1.00 Bathroom, 762 sqft

Residential on 0 Acres

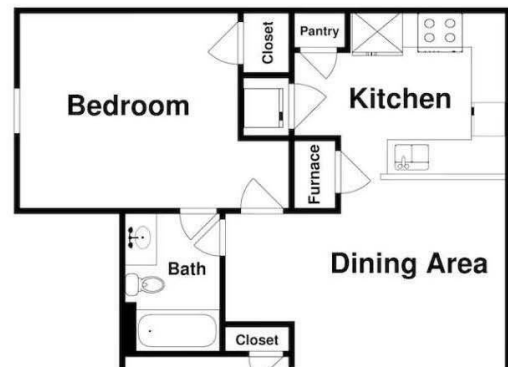
### SEAGROVE HIGHLANDS, SANTA ROSA BEACH, FL

This coastal updated condo is perfectly situated between Seagrove & Seaside. With new flooring, fresh paint, New HVAC, travertine, 10' ceilings & stainless steel appliances. Come make your summer memories biking down 30A or relaxing on the beautiful beaches. 2 beach cruisers bikes included. Plenty of room to park your golf cart too. Seagrove Highlands is aprox 750 yards from the sugar white beaches & crystal clear, emerald green waters of the Gulf of Mexico. Santa Rosa Beach is one of the most desirable areas along the panhandle of Florida where you can enjoy several state Parks, like popular Grayton Beach State Park & Camp Helen State Park. Seaside, Watercolor are less than 3 miles from Seagrove Highlands which host public events, local festivals, galleries, restaurants & shopping.

Built in 2006

### Essential Information

MLS® #	946913
Price	\$450,000
Bedrooms	2
Bathrooms	1.00
Full Baths	1
Square Footage	762
Acres	0.00
Year Built	2006



Type	Residential
Sub-Type	Condominiums
Style	N/A
Status	Active

### Community Information

Address	231 Somerset Bridge Rd Unit 1110
Area	30A East
Subdivision	SEAGROVE HIGHLANDS
City	SANTA ROSA BEACH
County	WALTON
State	FL
Zip Code	32459

### Amenities

Amenities	BBQ Pit/Grill, Dock, Picnic Area, Pool, Short Term Rental - Allowed, Elevators, Gated Community, Separate Storage
Utilities	Electric Available, Phone Available, Public Sewer Available, Public Water Available, TV Cable Available
Has Pool	Yes
Pool	Pool - In-Ground, Community, Pool - House, Private

### Interior

Interior Features	Floor Marble, Floor Tile, Furnished - All, Pantry, Washer/Dryer Hookup, Window Treatment All
Appliances	Dishwasher, Disposal, Dryer, Microwave, Refrigerator W/Ice Maker, Stove/Oven Electric, Washer
Heating	Heat: Central Electric
Cooling	A/C: Central Electric, Ceiling Fans

### Exterior

Exterior	Roof Metal, Siding Wood, Trim Wood, Siding Stucco
Exterior Features	Deck Open, Pool - In-Ground, Pool - House
Roof	Roof Metal

### School Information

Elementary	Dune Lakes
Middle	EMERALD COAST
High	SOUTH WALTON

### Additional Information

Days on Website	42
HOA Fees	1891.00
HOA Fees Freq.	Quarterly

**Listing Details**

Listing Office	Compass
----------------	---------

DISCLAIMER: Information Deemed Reliable but not guaranteed. The information being provided is for consumers' personal, non-commercial use and may not be used for any purpose other than to identify prospective properties consumers may be interested in purchasing.All listings are provided courtesy of the Emerald Coast Association of Realtors, Copyright2024, All rights reserved.