

\$2,506,939 - Tbd Pollard Cove East Lot 125, WATERSOUND

MLS® #946046

\$2,506,939

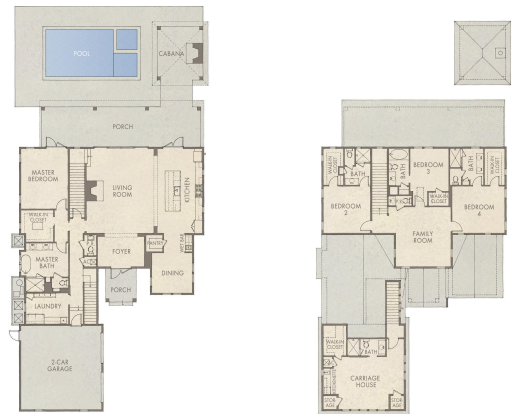
5 Bedroom, 7.00 Bathroom, 4,660 sqft
Residential on 0 Acres

WATERSOUND ORIGINS, WATERSOUND, FL

*Special Incentive!! Builder is waiving the lot premium on this desirable 72' wide by 140' deep home site. Discover coastal luxury at its finest with the Darien plan by Romair Homes, coming soon to Powell Landing East in the Watersound Origins community. This to-be-built masterpiece spans 4,660 square feet and will be situated on a large home site nestled with common areas at the north and east side of the lot. Boasting 4 bedrooms, 4 full and 2 half bathrooms, and a large 1-bedroom, 1-bathroom carriage house above the extended 2-car garage, there's plenty of room for retreat with this thoughtful design. The first step inside this luxurious home plan showcases a grand foyer that leads to an open-concept living room and kitchen adorned with soaring ceilings and a focal point fireplace, ideal for gatherings. Situated off the kitchen is a formal dining space with an abundance of natural light and a convenient wet bar.

The first-floor primary suite offers a serene retreat, while the second floor hosts three additional bedrooms, each with its own private bathroom as well as a comfortable secondary living space.

Perfect for hosting guests, the carriage house provides a private oasis with a large bedroom, kitchenette, and full a bathroom, complemented by storage closets for added convenience.



Outdoors, indulge in the ultimate Florida lifestyle with a luxurious pool and spa with a baja deck, perfect for soaking up the sun while staying cool, plus a cabana with outdoor fireplace package, alongside expansive covered porch space.

With impeccable craftsmanship and premium finishes throughout, the Darien plan embodies coastal elegance, offering an unparalleled living experience in the sought-after Watersound Origins community. Don't miss your chance to make this exquisite residence your own and embrace the epitome of coastal luxury.

The Watersound Origins community is one of South Walton's most coveted neighborhoods for its exceptional amenities, beautiful new homes, and prime location. Amenities include the Village Commons pool & fitness center, sports courts including tennis and pickle ball, miles of nature trails, dock access to Lake Powell, unlimited golf, and lots of green space for outdoor play. The all new Watersound Town Center brings a new level of excitement and convenience to the community with a Publix Super Market, delicious restaurants, healthcare facilities, a seasonal weekly Farmers Market, and more right at the entrance to the neighborhood!

*Pricing for inventory homes include lot premiums and may include optional upgrades. Added options/upgrades and pricing are subject to change. Please check with the on-site community specialists for the latest information for this home.

Built in 2025

Essential Information

MLS® #	946046
Price	\$2,506,939
Bedrooms	5
Bathrooms	7.00
Full Baths	5
Half Baths	2
Square Footage	4,660
Acres	0.23
Year Built	2025
Type	Residential
Sub-Type	Detached Single Family
Style	Florida Cottage
Status	Active

Community Information

Address	Tbd Pollard Cove East Lot 125
Area	30A East
Subdivision	WATERSOUND ORIGINS
City	WATERSOUND
County	WALTON
State	FL
Zip Code	32461

Amenities

Amenities	Community Room, Dock, Exercise Room, Fishing, Golf, Pets Allowed, Pickle Ball, Picnic Area, Playground, Pool, No Short Term Rental, Tennis, Waterfront
Utilities	Electric Available, Gas - Natural, Public Sewer Available, Public Water Available, Tap Fee Paid, TV Cable Available
Parking Spaces	2
Parking	Garage: Attached, Oversized
# of Garages	2
Has Pool	Yes
Pool	Pool - Heated, Pool - In-Ground, Private

Interior

Interior Features	Ceiling Crwn Molding, Ceiling Raised, Floor Hardwood, Guest Quarters, Kitchen Island, Lighting Recessed, Pantry, Shelving, Washer/Dryer Hookup, Wet Bar
Appliances	Auto Garage Door Opn, Dishwasher, Disposal, Microwave, Range Hood,

	Refrigerator W/Ice Maker, Stove/Oven Dual Fuel, Wine Refrigerator
Heating	Heat: Central Electric
Cooling	A/C: Two Or More, A/C: Central Electric, Ceiling Fans
# of Stories	2

Exterior

Exterior	Siding CmntFbrHrdBrd, Foundation Slab On Grade
Exterior Features	Cabana, Deck Covered, Fenced Back Yard, Fireplace, Hot Tub, Pool - Heated, Pool - In-Ground, Porch Covered, Separate Living Area, Shower, Sprinkler System
Foundation	Foundation Slab On Grade

School Information

Elementary	Dune Lakes
Middle	EMERALD COAST
High	SOUTH WALTON

Additional Information

Days on Website	56
Zoning	Residential Single Family
HOA Fees	585.00
HOA Fees Freq.	Quarterly

Listing Details

Listing Office	Berkshire Hathaway HomeServices
----------------	---------------------------------

DISCLAIMER: Information Deemed Reliable but not guaranteed. The information being provided is for consumers' personal, non-commercial use and may not be used for any purpose other than to identify prospective properties consumers may be interested in purchasing. All listings are provided courtesy of the Emerald Coast Association of Realtors, Copyright2024, All rights reserved.