

# \$655,000 - 231 Somerset Bridge Rd Unit 1207, SANTA ROSA

MLS® #944700

---

## \$655,000

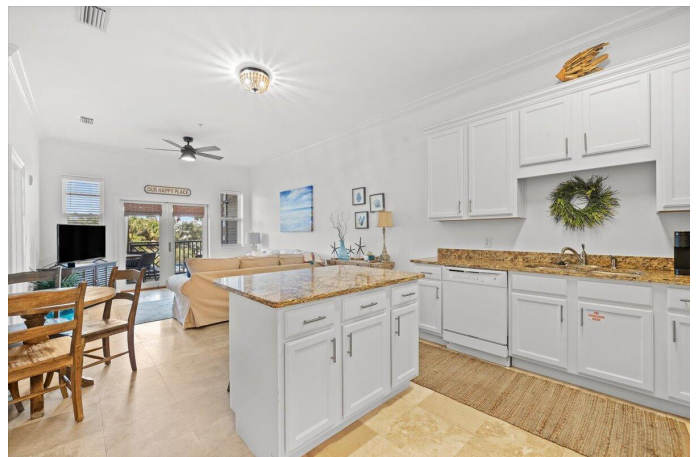
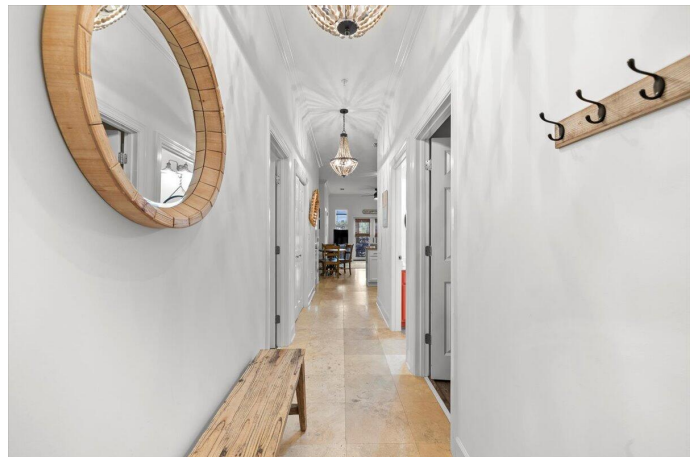
3 Bedroom, 2.00 Bathroom, 1,126 sqft  
Residential on 0 Acres

SEAGROVE HIGHLANDS, SANTA ROSA BEACH, FL

This stunning second floor fully furnished condo offers the ultimate in coastal living. Located in a gated Seagrove Beach community moments away from the waterfront, this property is a true gem whether you're looking for a full-time residence, second home, or investment unit with the potential for more than \$57,000 in rental income! The sleek, white kitchen has been beautifully updated, and a large center island provides extra counter space as well as counter-height seating. The kitchen opens easily into a dining area and then into a living space, and the design of the floor plan ensures that you and your guest can move around easily. You can enjoy the comfort of the huge sectional couch or open the double French doors to relax on the lovely screened in porch. Have a meal or beverage on the balcony without the worry of bug bites!

Back inside, you'll find three bedrooms and two full baths. The primary bedroom is truly an oasis, with its own screened in balcony and private ensuite. Soak in the luxury of the separate shower and bathtub, and enjoy knowing that you won't have to share space due to the huge double vanity!

Down the hallway, you'll find two additional guest bedrooms and a second bath, conveniently located from the sleeping or living areas. This condo also comes with an installed stackable full-sized washer and dryer, making your stay and your guests' vacation a breeze.



If you like to take a refreshing dip after a day on the beach, this gated community offers a private pool. If you want to explore the northwestern Florida flora and fauna, enjoy the walking and biking trails of the nearby Point Washington State Forest. If you'd rather savor good food, tasty beverages, and local music, you'll find hundreds of independently owned hot spots all along 30A from Grayton to Seaside to Seagrove Beaches and beyond.

Has this property piqued your interest?  
Contact us now to make your dream of owning a beach home a reality!

Built in 2006

### **Essential Information**

MLS® #	944700
Price	\$655,000
Bedrooms	3
Bathrooms	2.00
Full Baths	2
Square Footage	1,126
Acres	0.00
Year Built	2006
Type	Residential
Sub-Type	Condominiums
Style	N/A
Status	Active

### **Community Information**

Address	231 Somerset Bridge Rd Unit 1207
Area	30A East
Subdivision	SEAGROVE HIGHLANDS
City	SANTA ROSA BEACH
County	WALTON

State	FL
Zip Code	32459

## Amenities

Amenities	BBQ Pit/Grill, Elevators, Gated Community, Pavillion/Gazebo, Pets Allowed, Pool, Separate Storage, Short Term Rental - Allowed, Tennis, TV Cable Available
Utilities	Electric Available, Phone Available, Public Sewer Available, Public Water Available, TV Cable Available
Has Pool	Yes
Pool	Community

## Interior

Interior Features	Ceiling Crwn Molding, Floor Laminate, Floor Tile, Furnished - All, Kitchen Island, Window Treatment All
Appliances	Dishwasher, Disposal, Dryer, Fire Alarm/Sprinkler, Microwave, Oven:Self Cleaning, Refrigerator W/Ice Maker, Stove/Oven Electric, Washer
Heating	Heat: Central Electric
Cooling	A/C: Central Electric, Ceiling Fans

## Exterior

Exterior	Concrete, Roof Metal
Exterior Features	Porch Screened
Roof	Roof Metal

## School Information

Elementary	Dune Lakes
Middle	EMERALD COAST
High	SOUTH WALTON

## Additional Information

Days on Website	60
HOA Fees	2310.00
HOA Fees Freq.	Quarterly

## Listing Details

Listing Office	Emerald Coast Beach Homes LLC
----------------	-------------------------------

DISCLAIMER: Information Deemed Reliable but not guaranteed. The information being provided is for consumers' personal, non-commercial use and may not be used for any purpose other than to identify prospective properties consumers may be interested in purchasing.All listings are provided courtesy of the Emerald Coast Association of Realtors, Copyright2024, All rights reserved.