

# \$619,500 - 179 S County Highway 393 Unit 417, SANTA ROSA BEACH, FL

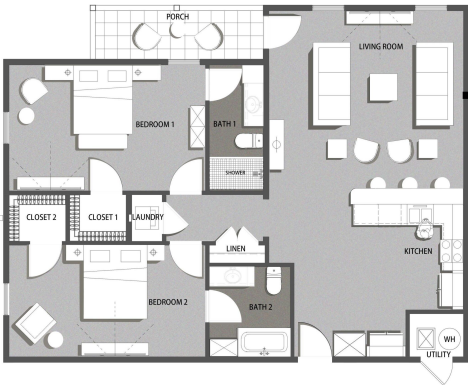
MLS® #942907

## \$619,500

2 Bedroom, 2.00 Bathroom, 1,224 sqft  
Residential on 0 Acres

Pinewood 30A, SANTA ROSA BEACH, FL

Pinewood 30A, a brand new South Walton community, offering the perfect combination of luxury and convenience. Tucked away amongst the beautiful Point Washington State Forest and just a short bike ride to white sand beaches. This ADA compliant 2 bed, 2 bath condominium is the ultimate getaway into the 30A lifestyle. Luxury features include quartz countertops, stainless GE energy star appliances, luxury vinyl + tile flooring, large walk-in closets with custom wood shelving, 9' ceilings, 8' solid core doors, private covered porches + more!



SAND PINE PLAN (1,224 SQ. FT.)



Built in 2022

## Essential Information

MLS® #	942907
Price	\$619,500
Bedrooms	2
Bathrooms	2.00
Full Baths	2
Square Footage	1,224
Acres	0.00
Year Built	2022
Type	Residential
Sub-Type	Condominiums
Style	N/A
Status	Active

## Community Information

Address	179 S County Highway 393 Unit 417
Area	30A West
Subdivision	Pinewood 30A
City	SANTA ROSA BEACH
County	WALTON
State	FL
Zip Code	32459

### Amenities

Amenities	BBQ Pit/Grill, Elevators, Exercise Room, Gated Community, Pool, Short Term Rental - Allowed
Utilities	Electric Available, Public Sewer Available, Public Water Available
Has Pool	Yes
Pool	Community

### Interior

Interior Features	Ceiling Crwn Molding, Floor Tile, Floor Vinyl, Furnished - All, Washer/Dryer Hookup, Window Treatment All
Appliances	Cooktop, Dishwasher, Disposal, Dryer, Fire Alarm/Sprinkler, Microwave, Range Hood, Refrigerator W/Ice Maker, Smoke Detector, Stove/Oven Electric, Washer
Heating	Heat: Central Electric
Cooling	A/C: Central Electric

### Exterior

Exterior	Block, Frame, Roof Metal, Siding CmntFbrHrdBrd, Siding Shake
Exterior Features	Porch Covered, Porch Screened
Roof	Block, Roof Metal
Construction	Frame

### School Information

Elementary	VAN R. BUTLER
Middle	EMERALD COAST
High	SOUTH WALTON

### Additional Information

Days on Website	82
HOA Fees	745.41
HOA Fees Freq.	Monthly

### Listing Details

DISCLAIMER: Information Deemed Reliable but not guaranteed. The information being provided is for consumers' personal, non-commercial use and may not be used for any purpose other than to identify prospective properties consumers may be interested in purchasing.All listings are provided courtesy of the Emerald Coast Association of Realtors, Copyright2024, All rights reserved.