

\$439,500 - 179 S County Highway 393 Unit 414, SANTA ROSA BEACH

MLS® #942903

\$439,500

1 Bedroom, 1.00 Bathroom, 785 sqft
Residential on 0 Acres

Pinewood 30A, SANTA ROSA BEACH, FL

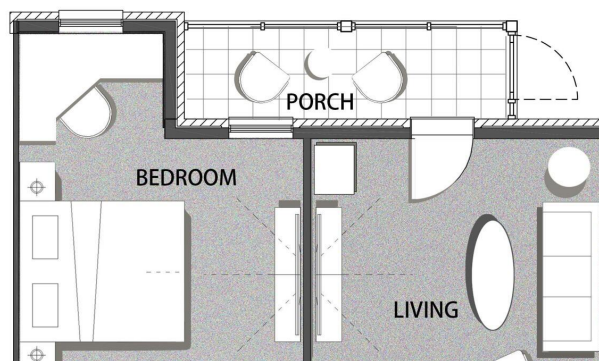
Immediate Occupancy! Introducing Pinewood 30A, a brand new South Walton community, offering the perfect combination of luxury and convenience. Tucked away amongst the beautiful Point Washington State Forest and just a short bike ride to white sand beaches. This preserve facing 1 bedroom, 1 bathroom condominium is the ultimate getaway into the 30A lifestyle. Luxury features include a shiplap feature wall, quartz countertops, stainless GE energy star appliances, luxury vinyl + tile flooring, large walk-in closets with custom wood shelving, 9' ceilings, 8' solid core doors, private covered porches + more!

Built in 2022

Essential Information

MLS® #	942903
Price	\$439,500
Bedrooms	1
Bathrooms	1.00
Full Baths	1
Square Footage	785
Acres	0.00
Year Built	2022
Type	Residential
Sub-Type	Condominiums
Style	N/A
Status	Active

Community Information



SPRUCE PINE PLAN (785 SQ. FT.)

Address	179 S County Highway 393 Unit 414
Area	30A West
Subdivision	Pinewood 30A
City	SANTA ROSA BEACH
County	WALTON
State	FL
Zip Code	32459

Amenities

Amenities	BBQ Pit/Grill, Elevators, Exercise Room, Gated Community, Pool, Short Term Rental - Allowed
Utilities	Electric Available, Public Sewer Available, Public Water Available
Has Pool	Yes
Pool	Community

Interior

Interior Features	Ceiling Crwn Molding, Floor Tile, Floor Vinyl, Furnished - None, Washer/Dryer Hookup, Window Treatment All
Appliances	Dishwasher, Disposal, Dryer, Fire Alarm/Sprinkler, Microwave, Refrigerator W/Ice Maker, Smoke Detector, Smooth Stovetop Rnge, Stove/Oven Electric, Washer
Heating	Heat: Central Electric
Cooling	A/C: Central Electric

Exterior

Exterior	Block, Siding Brick All, Frame, Roof Metal, Siding CmntFbrHrdBrd, Siding Shake
Exterior Features	Porch Covered, Porch Screened
Roof	Block, Roof Metal
Construction	Frame

School Information

Elementary	VAN R. BUTLER
Middle	EMERALD COAST
High	SOUTH WALTON

Additional Information

Days on Website	84
HOA Fees	478.06
HOA Fees Freq.	Monthly

Listing Details

Listing Office Berkshire Hathaway HomeServices

DISCLAIMER: Information Deemed Reliable but not guaranteed. The information being provided is for consumers' personal, non-commercial use and may not be used for any purpose other than to identify prospective properties consumers may be interested in purchasing.All listings are provided courtesy of the Emerald Coast Association of Realtors, Copyright2024, All rights reserved.