

# \$488,500 - 9955 E County Highway 30a 100, SEACREST

MLS® #938475

**\$488,500**

0 Bedroom, 1.00 Bathroom, 325 sqft

Residential on 0 Acres

INN AT SEACREST BEACH (THE), SEACREST, FL

This Seacrest Beach coastal luxury studio is the perfect destination for your vacation of a lifetime! Stay in this gorgeous studio across the street from the beach and nestled between beautiful Rosemary and Alys Beach on 30A. Rosemary Town Center is just a short stroll or bike ride away. Alys Beach offers concerts on the green under the stars. This unit is very private on the end of the building-steps away from the beautiful pool and hot tub. Parking is directly outside front door!

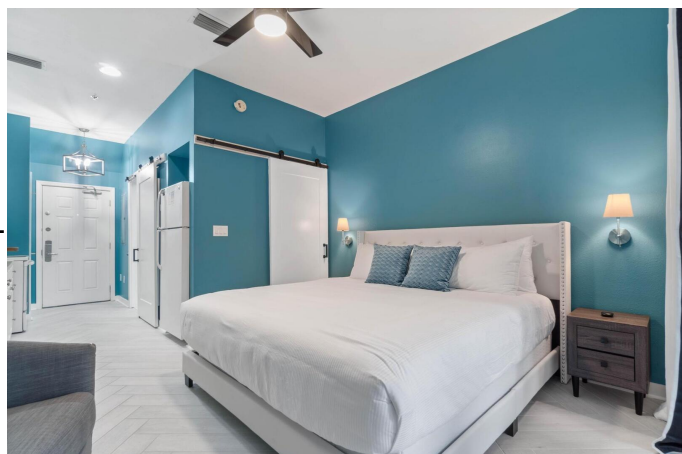
Built in 2005

## Essential Information

|                |              |
|----------------|--------------|
| MLS® #         | 938475       |
| Price          | \$488,500    |
| Bathrooms      | 1.00         |
| Full Baths     | 1            |
| Square Footage | 325          |
| Acres          | 0.00         |
| Year Built     | 2005         |
| Type           | Residential  |
| Sub-Type       | Condominiums |
| Style          | N/A          |
| Status         | Active       |

## Community Information

|             |                               |
|-------------|-------------------------------|
| Address     | 9955 E County Highway 30a 100 |
| Area        | 30A East                      |
| Subdivision | INN AT SEACREST BEACH (THE)   |



|          |          |
|----------|----------|
| City     | SEACREST |
| County   | WALTON   |
| State    | FL       |
| Zip Code | 32461    |

### Amenities

|           |  |
|-----------|--|
| Amenities | Beach, Deed Access, Pool   |
| Utilities | Electric Available, Public Sewer Available, Public Water Available, TV Cable Available |
| Parking   | Other  |
| Has Pool  | Yes  |
| Pool      | Community  |

### Interior

|         |                       |
|---------|-----------------------|
| Cooling | A/C: Central Electric |
|---------|-----------------------|

### School Information

|            |               |
|------------|---------------|
| Elementary | Dune Lakes    |
| Middle     | EMERALD COAST |
| High       | SOUTH WALTON  |

### Additional Information

|                 |           |
|-----------------|-----------|
| Days on Website | 147       |
| HOA Fees        | 1580.00   |
| HOA Fees Freq.  | Quarterly |

### Listing Details

|                |                                  |
|----------------|----------------------------------|
| Listing Office | Emerald Seascapes Properties LLC |
|----------------|----------------------------------|

DISCLAIMER: Information Deemed Reliable but not guaranteed. The information being provided is for consumers' personal, non-commercial use and may not be used for any purpose other than to identify prospective properties consumers may be interested in purchasing. All listings are provided courtesy of the Emerald Coast Association of Realtors, Copyright2024, All rights reserved.