

\$362,000 - 9902 S Thomas Dr Unit 1729, PANAMA CITY BEACH

MLS® #932499

\$362,000

3 Bedroom, 2.00 Bathroom, 1,262 sqft
Residential on 0 Acres

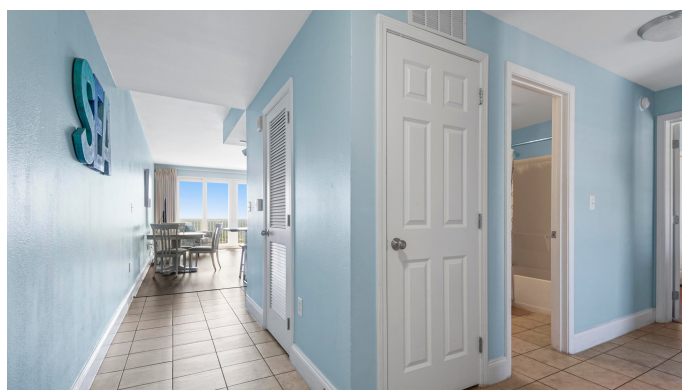
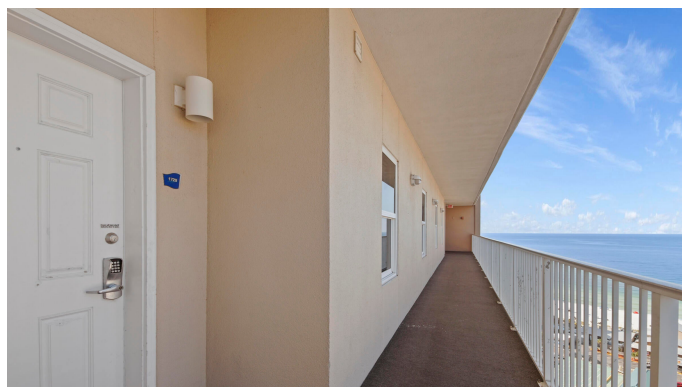
Laketown Wharf, PANAMA CITY BEACH, FL

This stunning 17th-floor unit is located in Laketown Wharf Resort, which offers unparalleled access to all the best that Panama City Beach has to offer. With beautiful beaches, fantastic dining and entertainment options, and plenty of shopping and amenities nearby. Inside the condo, you'll find two spacious bedrooms with comfortable king-size beds, as well as a cozy bunk room for additional guests. The stainless steel refrigerator is perfect for storing all your favorite foods, and the spacious balcony offers a great spot to relax and take in the stunning views. Outside of the condo, you'll find a wealth of amenities to enjoy. With 5 pools, 2 hot tubs, and a large two-floor gym, you'll have plenty of opportunities to stay active and have fun. Other highlights of Laketown Wharf Resort

Built in 2007

Essential Information

MLS® #	932499
Price	\$362,000
Bedrooms	3
Bathrooms	2.00
Full Baths	2
Square Footage	1,262
Acres	0.00
Year Built	2007
Type	Residential



Sub-Type	Condominiums
Style	N/A
Status	Active

Community Information

Address	9902 S Thomas Dr Unit 1729
Area	Bay County
Subdivision	Laketown Wharf
City	PANAMA CITY BEACH
County	BAY
State	FL
Zip Code	32408

Amenities

Amenities	Dumpster, Elevators, Exercise Room, Gated Community, Golf, Pickle Ball, Pool, Short Term Rental - Allowed, TV Cable Available, Game Room, Handball
Utilities	Electric Available, Public Sewer Available, Public Water Available, TV Cable Available, Phone Available
Parking	Garage
Is Waterfront	Yes
Waterfront	Lake
Has Pool	Yes
Pool	Community

Interior

Appliances	Dishwasher, Dryer, Microwave, Refrigerator W/Ice Maker, Smoke Detector, Stove/Oven Electric, Washer
Heating	Heat: Central Electric
Cooling	A/C: Central Electric

Exterior

Exterior Features	Balcony
-------------------	---------

School Information

Elementary	BREAKFAST POINT
Middle	BREAKFAST POINT
High	ARNOLD

Additional Information

Days on Website	247
-----------------	-----

HOA Fees	2385.01
HOA Fees Freq.	Quarterly

Listing Details

Listing Office	Saltwater Real Estate of PCB
----------------	------------------------------

DISCLAIMER: Information Deemed Reliable but not guaranteed. The information being provided is for consumers' personal, non-commercial use and may not be used for any purpose other than to identify prospective properties consumers may be interested in purchasing.All listings are provided courtesy of the Emerald Coast Association of Realtors, Copyright2024, All rights reserved.