

\$775,000 - Tbd Horseshoe Cir, MIRAMAR BEACH

MLS® #924174

\$775,000

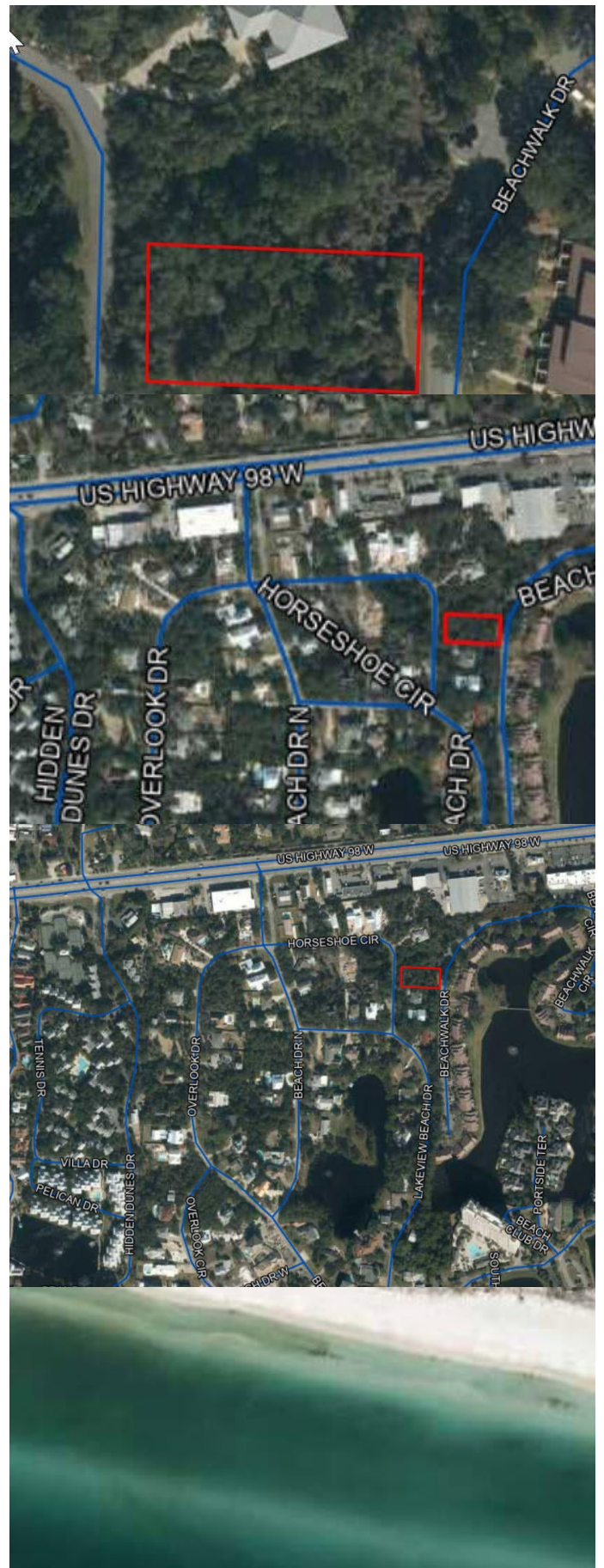
Bedroom, Bathroom, 15,682 sqft

Land on 0 Acres

GULF PINES, MIRAMAR BEACH, FL

Few neighborhoods as special as Gulf Pines exist along the Emerald Coast. Enjoy the privacy of a quiet gulf front community with approximately 1300 feet of beach situated on one of the most beautiful beaches in the world.

It is rare to find quiet solitude amidst all the conveniences of resort living. Perfect for the construction of a second home, rental or full-time residence, this large lot is a short walk to the Gulf Pines private beach access. In addition, Lake Morrison in Gulf Pines offers common access to the lake for fishing, stand-up paddle boarding and kayaking. Streets were paved by the county and the neighborhood lends itself to walks and family bike rides. Neighbors enjoy golf cart rides to the beach and the pavilion is perfect for gatherings with family and friends. Ample common area parking for golf carts, bikes and automobiles. This quaint neighborhood, situated between Hidden Dunes and Sandestin, is only a short bike ride to Baytowne and minutes from shopping, banking, hospital, golfing, tennis and fine dining. On Saturday mornings after a walk on the beach, head to the Farmer's Market at Grand Boulevard for fresh fruits, vegetables and local honey, or breakfast at the Market Shops at Sandestin. The best part about living in Gulf Pines is the laid-back beach atmosphere and the beautiful surroundings. Come and discover the beauty of living in Gulf Pines. See you at the beach!



Essential Information

MLS® #	924174
Price	\$775,000
Square Footage	15,682
Acres	0.36
Type	Land
Sub-Type	Residential Land
Status	Active

Community Information

Address	Tbd Horseshoe Cir
Area	Miramar/Sandestin Resort
Subdivision	GULF PINES
City	MIRAMAR BEACH
County	WALTON
State	FL
Zip Code	32550

Amenities

Amenities	Beach, Deed Access, Fishing, Owners Pets Allowed, Pavillion/Gazebo, Short Term Rental - Allowed, Waterfront
Utilities	Electric Available, Public Sewer Available, Public Water Available, TV Cable Available
Features	Interior, See Remarks, Within 1/2 Mile Of Water

Exterior

Lot Description	Interior, See Remarks, Within 1/2 Mile Of Water
-----------------	---

School Information

Elementary	VAN R. BUTLER
Middle	EMERALD COAST
High	SOUTH WALTON

Additional Information

Days on Website	368
Zoning	Residential Single Family
HOA Fees	300.00
HOA Fees Freq.	Annually

Listing Details

Listing Office

La Florida Coastal Properties

DISCLAIMER: Information Deemed Reliable but not guaranteed. The information being provided is for consumers' personal, non-commercial use and may not be used for any purpose other than to identify prospective properties consumers may be interested in purchasing. All listings are provided courtesy of the Emerald Coast Association of Realtors, Copyright 2024, All rights reserved.