

\$325,000 - 220 Stillwell Blvd, CRESTVIEW

MLS® #768436

\$325,000

Bedroom, Bathroom, 13,068 sqft
Commercial Sales on 0 Acres

N/A, CRESTVIEW, FL

PROPERTY IS READY FOR REDEVELOPMENT. ZONED INDUSTRIAL. PROPERTY INCLUDES 4 PARCELS WITH APPROXIMATELY 1.2 ACRES. SEE MLS 768439, MLS 768445, MLS 768441. TOTAL PRICE IS \$325,000.FOR ALL FOUR PARCELS..

Essential Information

MLS® #	768436
Price	\$325,000
Square Footage	13,068
Acres	0.30
Type	Commercial Sales
Status	Active

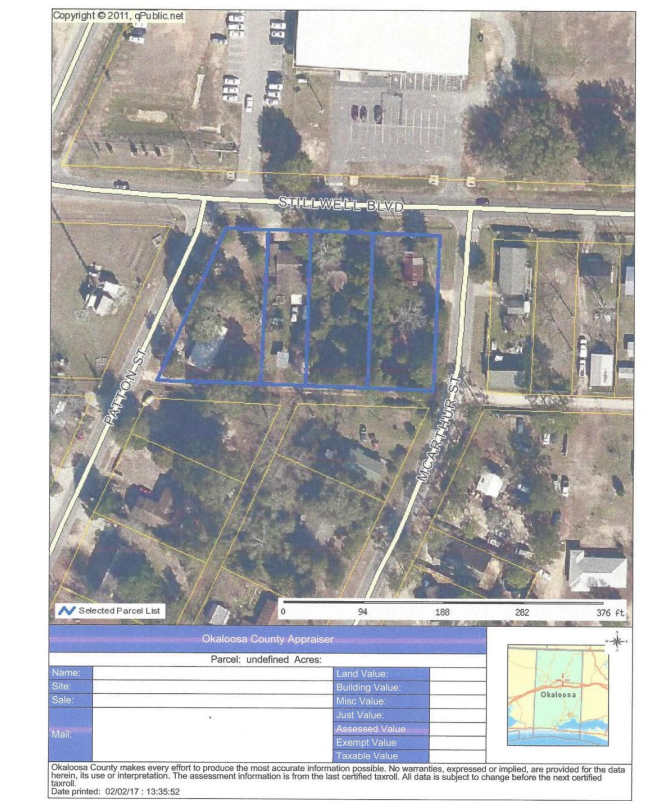
Community Information

Address	220 Stillwell Blvd
Area	Crestview Area
Subdivision	N/A
City	CRESTVIEW
County	OKALOOSA
State	FL
Zip Code	32539

Exterior

Lot Description	250 X 184 X 320 X 194
-----------------	-----------------------

Additional Information



Days on Website	2639
Zoning	INDUSTRIAL

Listing Details

Listing Office	RE/MAX By the Sea
----------------	-------------------

DISCLAIMER: Information Deemed Reliable but not guaranteed. The information being provided is for consumers' personal, non-commercial use and may not be used for any purpose other than to identify prospective properties consumers may be interested in purchasing.All listings are provided courtesy of the Emerald Coast Association of Realtors, Copyright2024, All rights reserved.