

\$5,995 - Lot 4 Keesler Lane, Chipley

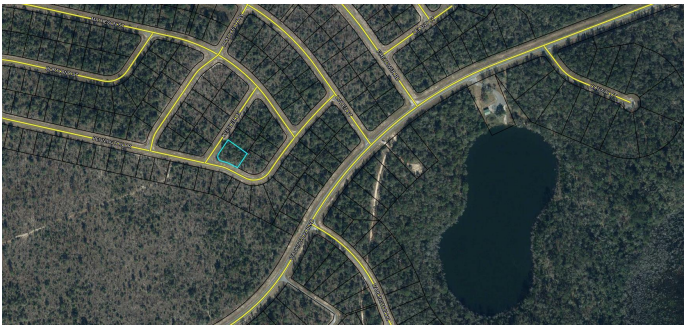
MLS® #925766

\$5,995

Bedroom, Bathroom, 12,632 sqft
Land on 0 Acres

Sunny Hills, Chipley, FL

Beautiful .295 acre CORNER lot nestled in the country but also approx. 30 mins from the white sandy beaches, shopping, dining, and entertainment. You wont have to drive far to enjoy the cold water being this lot is a street over from the lake equipped with a boat ramp, dock, and pavilion for your picnic. Sounds refreshing, right? It does not end there with amenities for this NO HOA subdivision. Enjoy a day at the Country club playing the golf on the 18 hole green, or enjoy the summer hitting the numerous lakes for all your water sports activities, swimming, fishing, and picnics with friends



Essential Information

MLS® #	925766
Price	\$5,995
Sold Price	\$5,500
Square Footage	12,632
Acres	0.29
Type	Land
Sub-Type	Vacant Land
Status	Sold

Community Information

Address	Lot 4 Keesler Lane
Area	30 - Other Counties
Subdivision	Sunny Hills
City	Chipley

County	Washington
State	FL
Zip Code	32428

Amenities

Amenities	BBQ Pit/Grill, Boat Launch, Dock, Fishing, Golf, Pavillion/Gazebo, Pets Allowed, Picnic Area, Playground
Utilities	Electric, Other
Features	Build To Suit, Corner, Wooded

Exterior

Lot Description	Build To Suit, Corner, Wooded
-----------------	-------------------------------

School Information

Elementary	Not Available
Middle	Not Available
High	Not Available

Additional Information

Days on Website	332
Date Sold	2023-12-07
Zoning	Resid Single Family
HOA Fees	0.00

Listing Details

Listing Office	Keller Williams Realty FWB
----------------	----------------------------

DISCLAIMER: Information Deemed Reliable but not guaranteed. The information being provided is for consumers' personal, non-commercial use and may not be used for any purpose other than to identify prospective properties consumers may be interested in purchasing.All listings are provided courtesy of the Emerald Coast Association of Realtors, Copyright2024, All rights reserved.