

\$357,900 - 7236 Big Buck Boulevard, Southport

MLS® #754429

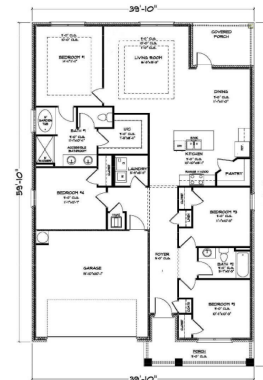
\$357,900

4 Bedroom, 2.00 Bathroom, 1,835 sqft

Residential on 0 Acres

Hodges Bayou Plantation 1, Southport, FL

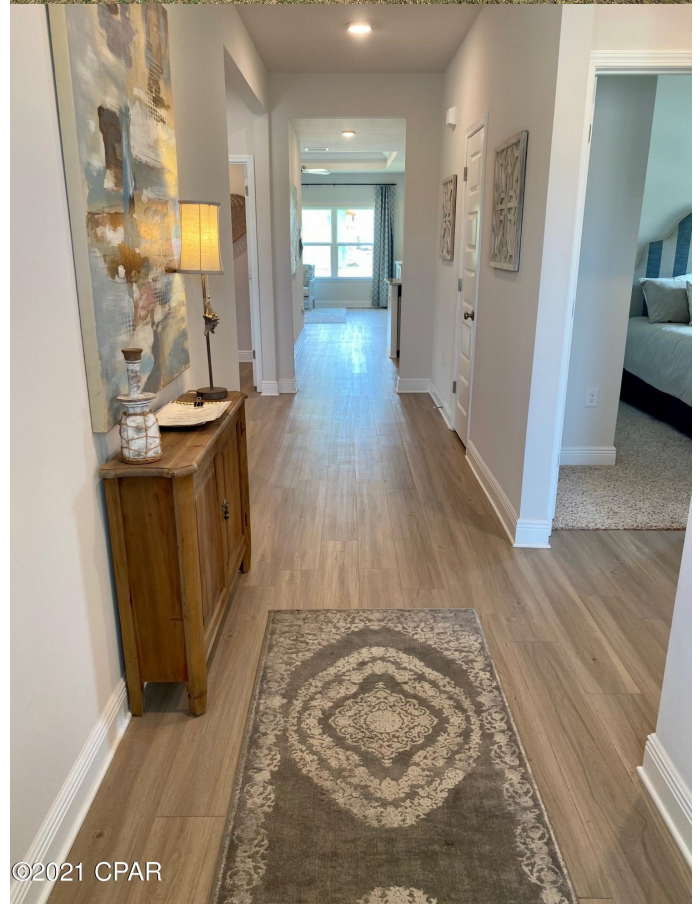
Come see our new home at 7236 Big Buck Blvd in Southport, Florida at Hodges Bayou Plantation. The Rhett is one of our one-story floorplans featured in our Hodges Bayou Plantation community in Southport, Florida. This is a fantastic floor plan and a community favorite. As you enter this 4 bedroom, 2 bath home, you will see 1,835 square feet of spacious living. The interior features 9' ceilings throughout, engineered vinyl plank flooring throughout the main areas, and carpet in the bedrooms. This home has tray ceilings in the living room and primary bedroom per plan as an added feature, granite countertops, and elegant doors. The kitchen has a center island, a nice size walk-in pantry and the stainless-steel appliances include smooth top range, microwave, and dishwasher. The kitchen opens to the living room, making your home more comfortable and open. The primary bedroom has its own bathroom featuring a spacious walk-in closet, a double vanity with granite countertops, and a separate shower and tub. Only 18 miles to Tyndall Air Force Base, 18 miles to the beautiful white sand beaches of Panama City Beach and 10 miles to the business and shopping district of Panama City, 23rd Street and Historical Panama City. Public boat launch access at Ira Hutchinson Park is just 1.5 miles away. This landing allows for direct access to the North Bay waterway and outward to the Gulf of Mexico. You will also find Lynn Haven Park just minutes away, with a serene nature board



©2024 CPAR



©2024 CPAR



©2021 CPAR

walk, as well launch area for kayaks.

Built in 2024

Essential Information

MLS® #	754429
Price	\$357,900
Bedrooms	4
Bathrooms	2.00
Full Baths	2
Square Footage	1,835
Acres	0.20
Year Built	2024
Type	Residential
Sub-Type	Detached
Style	Craftsman
Status	Pending

Community Information

Address	7236 Big Buck Boulevard
Area	04 - Bay County - North
Subdivision	Hodges Bayou Plantation 1
City	Southport
County	Bay
State	FL
Zip Code	32409

Amenities

Utilities	Cable Available, Sewer Available, Water Available
Parking	Driveway, Garage, Garage Door Opener
# of Garages	2
Garages	Driveway, Garage, Garage Door Opener
Has Pool	Yes
Pool	Community

Interior

Appliances	Dishwasher, Electric Range, Electric Water Heater, Disposal, Microwave
Cooling	Central Air, Ceiling Fan(s), Electric

Exterior

Exterior	HardiPlank Type
Roof	Shingle
Construction	HardiPlank Type
Foundation	Slab

School Information

Elementary	Southport
Middle	Deane Bozeman
High	Deane Bozeman

Additional Information

Date Listed	March 18th, 2024
HOA Fees	225
HOA Fees Freq.	Quarterly

Listing Details

Listing Office	DR Horton Realty of Emerald Coast, LLC
----------------	--

DISCLAIMER: IDX information is provided exclusively for consumers' personal, non-commercial use and may not be used for any purpose other than to identify prospective properties consumers may be interested in purchasing.
Information Source: Bay County Association Of REALTORS® Multiple Listing Service