

\$435,000 - 5115 Gulf Dr # 2204, Panama City Beach

MLS® #753805

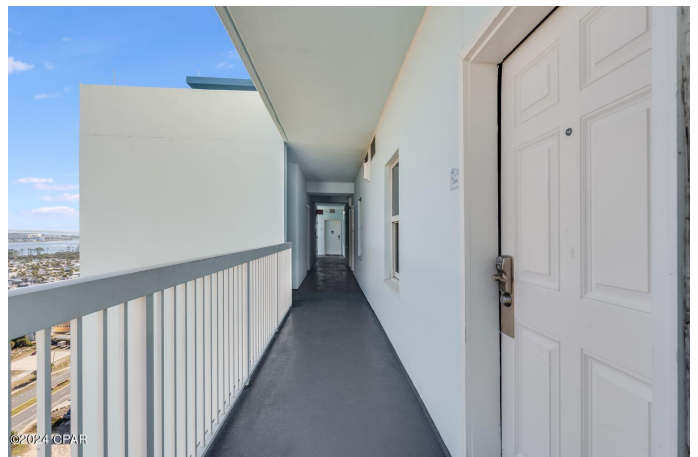
\$435,000

1 Bedroom, 2.00 Bathroom, 883 sqft

Residential on 0 Acres

Seychelles Resort Condominium, Panama City Beach, FL

Welcome home to your penthouse unit at the coveted Seychelles Resort! The breathtaking views from the twenty-second floor are a daily masterpiece, painting the sky with sunrise and sunset that will have you and your guests reluctant to leave. The primary bedroom is a sanctuary with its own private bathroom, offering a retreat within your own coastal haven for renters and family alike. Plus, with an additional bathroom and bunk beds in the hallway, this one-bedroom condo can comfortably sleep up to 5 people. The kitchen is a dream with its gorgeous stainless steel appliances, and every meal preparation is accompanied by the backdrop of the mesmerizing views that extend into the living room. Step onto your expansive balcony, where the emerald green waters stretch out before you, enhanced by the cool ocean breeze. Seychelles boasts an exceptional location on the east end of Thomas Drive, ensuring that your beachfront escape is not only luxurious but also conveniently situated. Nestled right next door to the highly popular beachfront restaurant, Schooners, you have a delectable dining destination just steps away. The HOA goes beyond convenience, covering all utilities, including electricity, and granting access to extraordinary amenities. Dive into relaxation with two gulf-front pools, unwind in the inviting hot tub, and stay active in the on-site gym. So, say goodbye to the ordinary and hello to the extraordinary. This condo is more than just a home; it's your ticket



to laid-back luxury and endless good vibes.
Your beachside dream is calling - come on in!

Built in 2006

Essential Information

MLS® #	753805
Price	\$435,000
Bedrooms	1
Bathrooms	2.00
Full Baths	2
Square Footage	883
Acres	0.00
Year Built	2006
Type	Residential
Sub-Type	Condominium
Style	High Rise
Status	Active

Community Information

Address	5115 Gulf Dr # 2204
Area	03 - Bay County - Beach
Subdivision	Seychelles Resort Condominium
City	Panama City Beach
County	Bay
State	FL
Zip Code	32408

Amenities

Amenities	Beach Rights
Parking	Covered
Garages	Covered
View	Gulf
Is Waterfront	Yes
Waterfront	Gulf
Has Pool	Yes
Pool	Electric Heat, In Ground, Pool, Community

Interior

Interior Features	High Ceilings, Pantry, Recessed Lighting, Window Treatments
Appliances	Dryer, Dishwasher, Electric Range, Electric Water Heater, Refrigerator, Washer
Heating	Central, Electric
Cooling	Central Air, Ceiling Fan(s), Electric

Exterior

Exterior	Stucco
Exterior Features	Balcony, Pool
Windows	Double Pane Windows
Construction	Stucco

School Information

Elementary	Patronis
Middle	Surfside
High	Arnold

Additional Information

Date Listed	March 6th, 2024
HOA Fees	1959.8
HOA Fees Freq.	Quarterly

Listing Details

Listing Office	Salty Marlin Realty LLC
----------------	-------------------------

DISCLAIMER: IDX information is provided exclusively for consumers' personal, non-commercial use and may not be used for any purpose other than to identify prospective properties consumers may be interested in purchasing.
Information Source: Bay County Association Of REALTORS® Multiple Listing Service