

\$1,800,000 - 2209 Thomas Drive, Panama City Beach

MLS® #753019

\$1,800,000

0 Bedroom, 0.00 Bathroom,
Commercial Sale on 1 Acres

Greentree Unit-1, Panama City Beach, FL

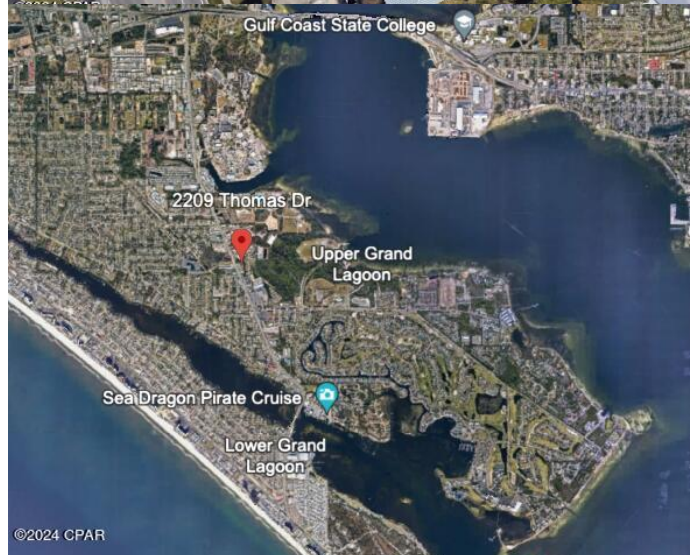
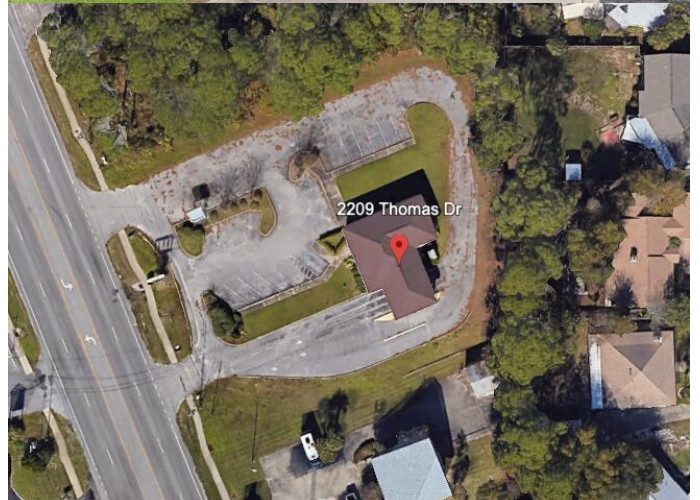
Don't miss this opportunity to own a bank property! This building was previously used as a bank and has fixtures and lay-out to support this concept already in place including a large walk-in vault and a double drive-thru.

Alternate uses could include restaurant with drive through a cannabis dispensary or a number of uses requiring high visibility, high traffic counts and great parking. This property also sits on 1.15 acres and has a digital sign that conveys with the sale. There are 21+/- parking spaces and 2 separate entrance points. Location is only 5 min to the Worlds Most Beautiful Beaches with THOUSANDS of gulf front condo units along its shores, just minutes away. Traffic counts vary from 20k+ per day to 30k+ per day depending on seasons. Building and land were previously leased for \$8k per month. Call today for this great investment opportunity!

Built in 1985

Essential Information

MLS® #	753019
Price	\$1,800,000
Bathrooms	0.00
Acres	1.15
Year Built	1985
Type	Commercial Sale
Sub-Type	Other
Status	Active



Community Information

Address	2209 Thomas Drive
Area	03 - Bay County - Beach
Subdivision	Greentree Unit-1
City	Panama City Beach
County	Bay
State	FL
Zip Code	32408

Interior

Cooling	Central Air
Stories	1

School Information

Elementary	Patronis
Middle	Surfside
High	Arnold

Additional Information

Date Listed	February 19th, 2024
-------------	---------------------

Listing Details

Listing Office	Full Sail Realty of NWFL
----------------	--------------------------

DISCLAIMER: IDX information is provided exclusively for consumers' personal, non-commercial use and may not be used for any purpose other than to identify prospective properties consumers may be interested in purchasing.
Information Source: Bay County Association Of REALTORS® Multiple Listing Service