

\$360,000 - 9902 S Thomas Drive # 1236, Panama City Beach

MLS® #752594

\$360,000

1 Bedroom, 2.00 Bathroom, 1,047 sqft
Residential on 0 Acres

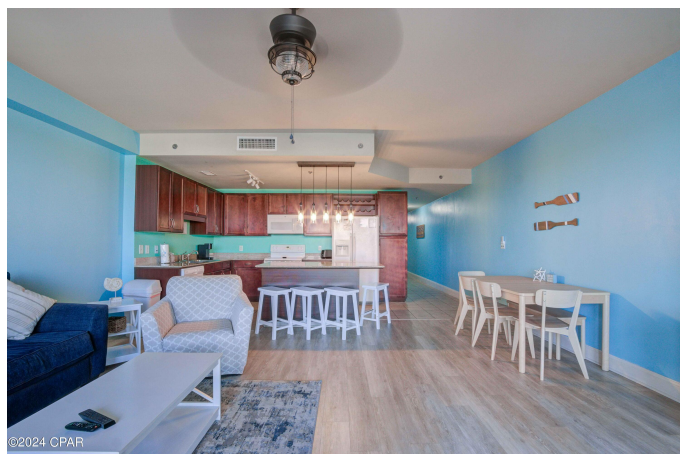
Laketown Wharf, Panama City Beach, FL

Just ONE LEVEL UP from the big, beautiful POOL, this resort condo is well situated for maximum enjoyment! Enjoy peekaboo gulf AND full lake views from the entry in the front to the balcony in the back. Cheery beach decor, all appliances, and all furnishings convey, including a Whirlpool dishwasher, Frigidaire stove and fridge with ice maker, and GE microwave and stackable washer/dryer. The kitchen also features granite countertops, pantry, double sink, and a wine rack. The island seats 3 easily with room for another 6 guests at the dining room table. Dining al fresco? Yes, please! There's a table for 4 on the lake- and gulf-view balcony. Both baths have the same granite countertops as the kitchen. Floors are tile in kitchen, bunk, hall, and baths and LVP in living room and full bedroom. A Smart Thermostat lets you control temps in person or remotely and easily set a schedule for guest comfort. Come see this condo TODAY! We look forward to receiving your offer!

Built in 2007

Essential Information

MLS® #	752594
Price	\$360,000
Bedrooms	1
Bathrooms	2.00
Full Baths	2



Square Footage	1,047
Acres	0.00
Year Built	2007
Type	Residential
Sub-Type	Condominium
Style	High Rise
Status	Active

Community Information

Address	9902 S Thomas Drive # 1236
Area	03 - Bay County - Beach
Subdivision	Laketown Wharf
City	Panama City Beach
County	Bay
State	FL
Zip Code	32408

Amenities

Utilities	Electricity Available, Sewer Available, Water Available
Features	Waterfront
Parking	Additional Parking
Garages	Additional Parking
View	Gulf, Lake
Is Waterfront	Yes
Waterfront	Lake, Waterfront
Has Pool	Yes
Pool	Community

Interior

Interior	Plank, Tile, Vinyl
Interior Features	Kitchen Island, Window Treatments
Appliances	Washer/Dryer Stacked, Dishwasher, Electric Range, Microwave, Refrigerator
Heating	Central
Cooling	Central Air, Ceiling Fan(s)

Exterior

Exterior	Concrete
Exterior Features	Balcony
Lot Description	Waterfront

Construction Concrete

School Information

Elementary Breakfast Point
Middle Breakfast Point
High Arnold

Additional Information

Date Listed February 9th, 2024
HOA Fees 1500
HOA Fees Freq. Quarterly

Listing Details

Listing Office EXP Realty LLC

DISCLAIMER: IDX information is provided exclusively for consumers' personal, non-commercial use and may not be used for any purpose other than to identify prospective properties consumers may be interested in purchasing.
Information Source: Bay County Association Of REALTORS® Multiple Listing Service