

\$419,900 - 1304 New Jersey Avenue, Lynn Haven

MLS® #752525

\$419,900

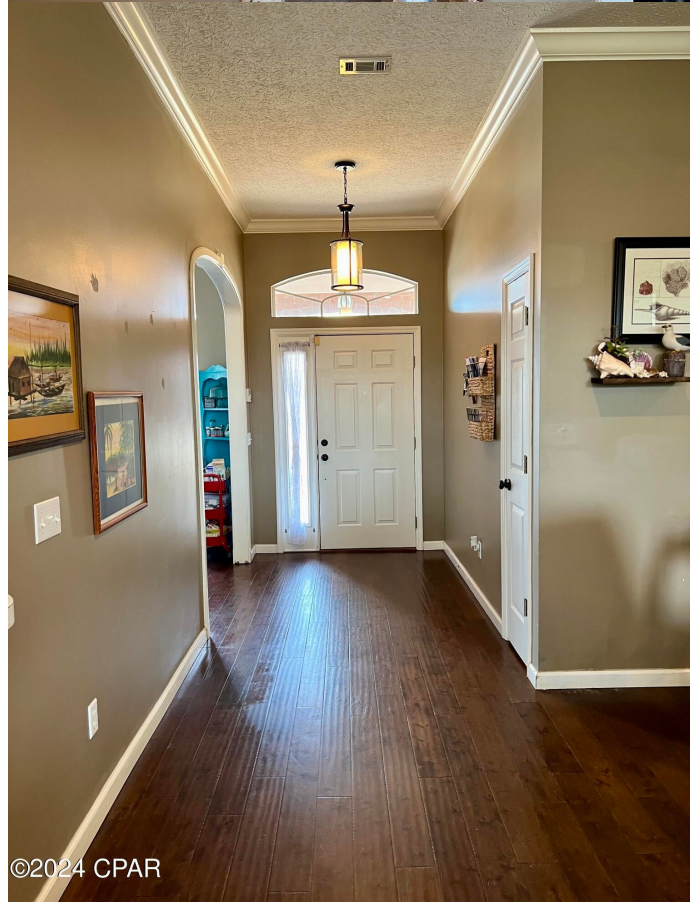
4 Bedroom, 2.00 Bathroom, 2,194 sqft
Residential on 0 Acres

Lynn Haven, Lynn Haven, FL

Welcome to this delightful four-bedroom, two-bath all-brick home nestled in the desirable North Harbor Landing area. From the inviting front porch to the spacious backyard, this property offers a perfect blend of comfort and convenience. **Interior Highlights:** As you step inside, you'll be greeted by high ceilings adorned with elegant crown molding and beautiful hardwood floors. The open living area boasts a cozy fireplace, creating a warm and inviting ambiance. French doors lead to the oversized screened-in porch, where you can relax and enjoy the serene views of the backyard. The split bedroom floor plan ensures privacy for the primary suite, making it an ideal retreat. Formal and informal dining areas are conveniently located off the well-appointed kitchen, perfect for entertaining family and friends. Stay connected with loved ones as you prepare meals--the kitchen features a large breakfast bar overlooking the living room. **Outdoor Oasis:** The large backyard is a true haven, complete with a wooden privacy fence. Solar panels, installed less than a year ago, contribute to energy efficiency. The Rain Bird irrigation system ensures your lawn stays lush and green year-round. Don't miss out on this one-of-a-kind home! Schedule a showing today.

Built in 2000

Essential Information



©2024 CPAR

MLS® #	752525
Price	\$419,900
Bedrooms	4
Bathrooms	2.00
Full Baths	2
Square Footage	2,194
Acres	0.34
Year Built	2000
Type	Residential
Sub-Type	Detached
Style	Ranch
Status	Active

Community Information

Address	1304 New Jersey Avenue
Area	02 - Bay County - Central
Subdivision	Lynn Haven
City	Lynn Haven
County	Bay
State	FL
Zip Code	32444

Amenities

Utilities	Electricity Available, Sewer Available, Trash Collection, Water Available, Cable Available, High Speed Internet Available, Natural Gas Available
Features	Dead End, Level, Subdivision
Parking	Driveway, Attached, Garage, Garage Door Opener
# of Garages	2
Garages	Driveway, Attached, Garage, Garage Door Opener

Interior

Interior	Tile, Carpet, Hardwood
Interior Features	Breakfast Bar, Pantry, Window Treatments, Attic, Crown Molding, Fireplace, High Ceilings, Natural Woodwork, Pull Down Attic Stairs, Split Bedrooms, Utility Room
Appliances	Dishwasher, Electric Range, Disposal, Microwave, Refrigerator, Gas Water Heater
Heating	Central, Electric
Cooling	Central Air, Ceiling Fan(s), Electric

Fireplace	Yes
Fireplaces	Gas

Exterior

Exterior	Brick Veneer
Exterior Features	Fence, Patio, Porch, Sprinkler/Irrigation
Lot Description	Dead End, Level, Subdivision
Windows	Double Pane Windows
Roof	Shingle
Construction	Brick Veneer
Foundation	Slab

School Information

Elementary	Lynn Haven
Middle	Mowat
High	Mosley

Additional Information

Date Listed	February 5th, 2024
-------------	--------------------

Listing Details

Listing Office	Coastal Living Realty & Associates
----------------	------------------------------------

DISCLAIMER: IDX information is provided exclusively for consumers' personal, non-commercial use and may not be used for any purpose other than to identify prospective properties consumers may be interested in purchasing.
Information Source: Bay County Association Of REALTORS® Multiple Listing Service