

\$594,846 - 1604 Rushes Avenue # Lot 466, Panama City

MLS® #751310

\$594,846

3 Bedroom, 3.00 Bathroom, 2,085 sqft
Residential on 0 Acres

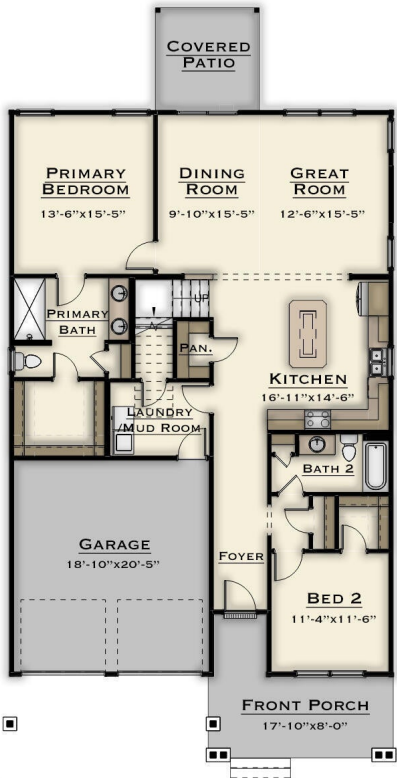
Sweetbay, Panama City, FL

Presenting the new Grayton plan in waterfront SweetBay. This spacious home offers plenty of comfortable indoor and outdoor living space with a large Great Room and kitchen extending out to a covered lanai. The main level primary suite features a large tile-to-ceiling shower and enormous walk-in closet. A second main level bedroom and full bath makes a great guest suite or study. The second floor features a third bedroom and full bath plus a loft that serves an additional living space or den or even an optional 4th bedroom. SweetBay is a walkable and golf-cart friendly community with unrivaled amenities: dock with Bay / Gulf access for kayaking, private beach, paddle boarding, and fishing, parks, junior olympic resort pools, sports court, miles of trails, and future amenities including a Publix-anchored town center and marina! New home buyers even get priority access to top-rated University Academy!

Built in 2024

Essential Information

MLS® #	751310
Price	\$594,846
Bedrooms	3
Bathrooms	3.00
Full Baths	3
Square Footage	2,085
Acres	0.25



©2024 CIPAR

Year Built	2024
Type	Residential
Sub-Type	Detached
Style	Florida
Status	Pending

Community Information

Address	1604 Rushes Avenue # Lot 466
Area	02 - Bay County - Central
Subdivision	Sweetbay
City	Panama City
County	Bay
State	FL
Zip Code	32405

Amenities

Amenities	Beach Rights, Dock, Picnic Area
Utilities	Cable Available, Electricity Available, Natural Gas Available, High Speed Internet Available, Sewer Available, Trash Collection, Underground Utilities, Water Available
Features	Corner Lot, Landscaped, Level
Parking	Attached, Driveway, Garage, Garage Door Opener
# of Garages	2
Garages	Attached, Driveway, Garage, Garage Door Opener
Has Pool	Yes
Pool	In Ground, Community

Interior

Interior	Plank, Tile, Vinyl
Interior Features	Bookcases, Crown Molding, Coffered Ceiling(s), Kitchen Island, New Paint, Other, Pantry, Recessed Lighting, Smart Thermostat, Natural Woodwork
Appliances	Dishwasher, Disposal, Gas Range, Microwave, Plumbed For Ice Maker, Range Hood
Heating	Central, Electric, Heat Pump
Cooling	Central Air, Electric, Heat Pump
# of Stories	2

Exterior

Exterior	Hardboard, HardiPlank Type
----------	----------------------------

Exterior Features	Sprinkler/Irrigation, Porch
Lot Description	Corner Lot, Landscaped, Level
Windows	Double Pane Windows
Roof	Shingle
Construction	Hardboard, HardiPlank Type

School Information

Elementary	University Academy
Middle	University Academy
High	Bay

Additional Information

Date Listed	November 7th, 2023
HOA Fees	363
HOA Fees Freq.	Quarterly

Listing Details

Listing Office	SweetBay Realty
----------------	-----------------

DISCLAIMER: IDX information is provided exclusively for consumers' personal, non-commercial use and may not be used for any purpose other than to identify prospective properties consumers may be interested in purchasing.
Information Source: Bay County Association Of REALTORS® Multiple Listing Service