

# \$475,900 - 9900 S Thomas Drive # 1918, Panama City Beach

MLS® #749821

## \$475,900

2 Bedroom, 3.00 Bathroom, 1,066 sqft  
Residential on 0 Acres

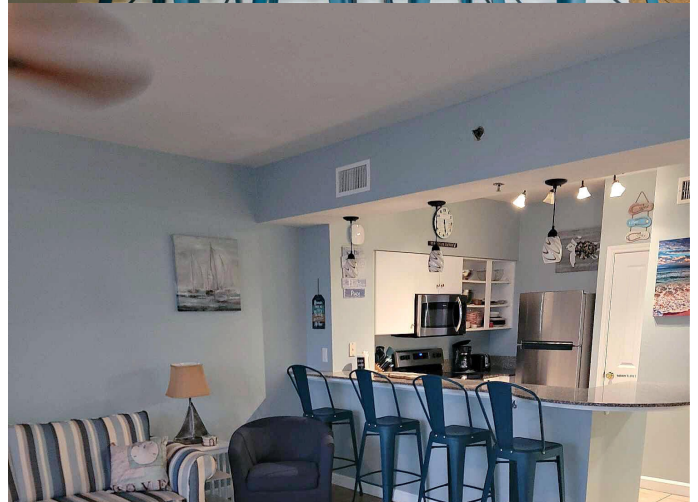
Shores Of Panama Phase I, Panama City Beach, FL

BEST PRICED J Unit in the iconic Shores of Panama condo complex! One of the prettiest resorts on the Emerald Coast and NOW is your chance to own at a great price! From the moment you walk in this stunning unit, the crystal clear waters of the Gulf call to you and you will be enamoured. Your guests will absolutely love the sunset views from your large private balcony while also taking in the views of the resort. This is the perfect turn key investment if you hire the current management company because there are rentals BUILT IN! It comes fully furnished and full of updates including being repainted and decorated with a coastal chic vibe that definitely stands out. Some of the additional features include new kitchen pendant lights, new outdoor furniture, new washer/dryer and the kitchen as well as all bathroom cabinets have been resurfaced. Schedule your showing today! Come out and see it today!

Built in 2007

## Essential Information

MLS® #	749821
Price	\$475,900
Bedrooms	2
Bathrooms	3.00
Full Baths	2
Half Baths	1
Square Footage	1,066



Acres	0.00
Year Built	2007
Type	Residential
Sub-Type	Condominium
Style	High Rise
Status	Active

## Community Information

Address	9900 S Thomas Drive # 1918
Area	03 - Bay County - Beach
Subdivision	Shores Of Panama Phase I
City	Panama City Beach
County	Bay
State	FL
Zip Code	32408

## Amenities

Amenities	Gated, Beach Rights, Game Room
View	Gulf
Is Waterfront	Yes
Waterfront	Gulf
Has Pool	Yes
Pool	Community

## Interior

Appliances	Dishwasher, Electric Water Heater, Microwave, Refrigerator, Dryer, Electric Range, Washer
Heating	Central, Electric
Cooling	Central Air, Electric

## Exterior

Exterior Features	Balcony
-------------------	---------

## School Information

Elementary	Breakfast Point
Middle	Breakfast Point
High	Arnold

## Additional Information

Date Listed	December 1st, 2023
-------------	--------------------

HOA Fees	1142
HOA Fees Freq.	Monthly

## **Listing Details**

Listing Office	Luxe Coastal Realty
----------------	---------------------

DISCLAIMER: IDX information is provided exclusively for consumers' personal, non-commercial use and may not be used for any purpose other than to identify prospective properties consumers may be interested in purchasing.

Information Source: Bay County Association Of REALTORS® Multiple Listing Service