

\$1,495,000 - 15100 Front Beach Road # 1602/1604, Panama City Beach, FL

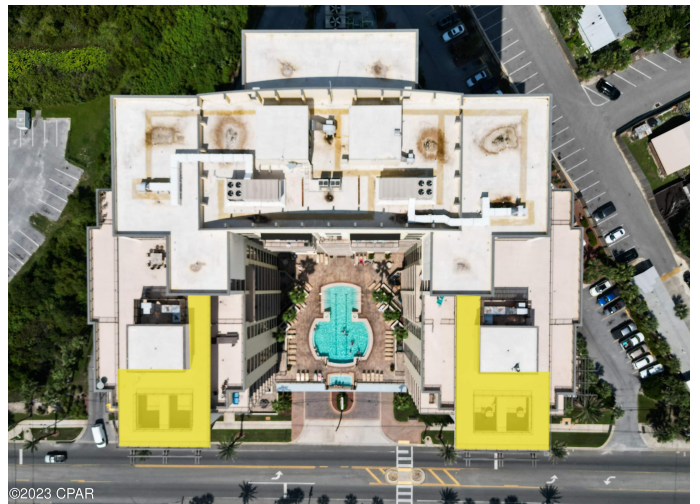
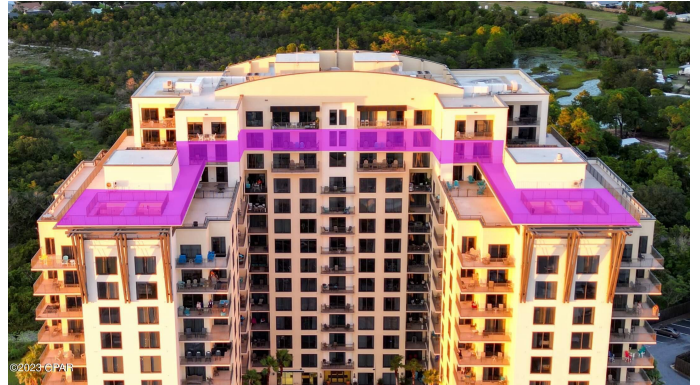
MLS® #749780

\$1,495,000

6 Bedroom, 6.00 Bathroom, 3,790 sqft
Residential on 0 Acres

Origin At Seahaven, Panama City Beach, FL

Here is a truly rare opportunity to own one of the largest (if not THE largest) lockout condo in PCB. Equally as rare is the opportunity to have your own rooftop private balcony overlooking the Gulf of Mexico. Now imagine owning the only two private rooftop balconies at Origin. Units 1602 and 1604 boast a whopping 3790 square feet combined, 6 bedrooms (4 ensuite master bedrooms), and 6 full baths, and 6 balconies! Both units are identical in square footage and floor plans. They are a mirror image of each other, with the lockout door connecting the units from the second master bedroom in each. Both units have a combination of tile and LVP flooring with NO CARPET! New high end matching appliances in both units, new lighting and ceiling fans in both units, both freshly painted, newly decorated, and newer flat panel TV's in both units. 1602 and 1604 encompasses the entire Gulf facing 16th floor facade. With the wall of windows in each unit, every room has amazing Gulf views and sunsets. From both rooftop balconies, you can enjoy amazing sunrises, sunsets, expansive Gulf views, views of West Bay to the north, and the best private viewing of the multiple firework shows in PCB. This amount of square footage, combined with two private rooftop balconies, 4 separate balconies, and the flexibility to short or long term rent them as individual 3/3's or one 6/6, is an absolute rarity. Also, not only does this combined lockout unit offer flexibility as an investment, it would a great second home,



vacation property, live in one side and short term the other, the possibilities are so numerous. 1602/1604 is being offered fully furnished and short term rental ready. These units are also being sold individually. Please see MLS number 746676 for 1602, and MLS number 749779 for 1604. These units are a true MUST SEE, so contact me today to schedule a viewing or for more information. If you're in the market, you definitely don't want to miss this one! Origin offers many amenities including two BBQ grill/picnic areas, a heated pool, hot tub, theater, game room, laundry facility, vending. a gated community with 24 hour security, and retail on site including Starbucks coffee, convenient store and grill, and Sunsations beach store.

Built in 2007

Essential Information

MLS® #	749780
Price	\$1,495,000
Bedrooms	6
Bathrooms	6.00
Full Baths	6
Square Footage	3,790
Acres	0.00
Year Built	2007
Type	Residential
Sub-Type	Condominium
Style	High Rise
Status	Active

Community Information

Address	15100 Front Beach Road # 1602/1604
Area	03 - Bay County - Beach
Subdivision	Origin At Seahaven
City	Panama City Beach
County	Bay

State	FL
Zip Code	32413

Amenities

Amenities	Game Room, Gated
Parking	Covered, Gated, Permit Required
Garages	Covered, Gated, Permit Required
View	Gulf
Has Pool	Yes
Pool	Gunite, Electric Heat, Community

Interior

Interior	Plank, Tile, Vinyl
Interior Features	Breakfast Bar, Kitchen Island, Remodeled, Recessed Lighting, Storage, Window Treatments
Appliances	Washer/Dryer Stacked, Dishwasher, Electric Range, Electric Water Heater, Disposal, Ice Maker, Microwave, Refrigerator
Heating	Central
Cooling	Central Air, Ceiling Fan(s)

Exterior

Exterior	Concrete
Exterior Features	Balcony
Construction	Concrete

School Information

Elementary	Hutchison Beach
Middle	Surfside
High	Arnold

Additional Information

Date Listed	November 30th, 2023
HOA Fees	3041.22
HOA Fees Freq.	Monthly

Listing Details

Listing Office	Pineapple Properties
----------------	----------------------

DISCLAIMER: IDX information is provided exclusively for consumers' personal, non-commercial use and may not be used for any purpose other than to identify prospective properties consumers may be interested in purchasing. Information Source: Bay County Association Of REALTORS® Multiple Listing Service