

\$625,000 - 1600 Marina Bay Drive # 809, Panama City

MLS® #749422

\$625,000

3 Bedroom, 3.00 Bathroom, 1,877 sqft
Residential on 0 Acres

Marina Bay Condo, Panama City, FL

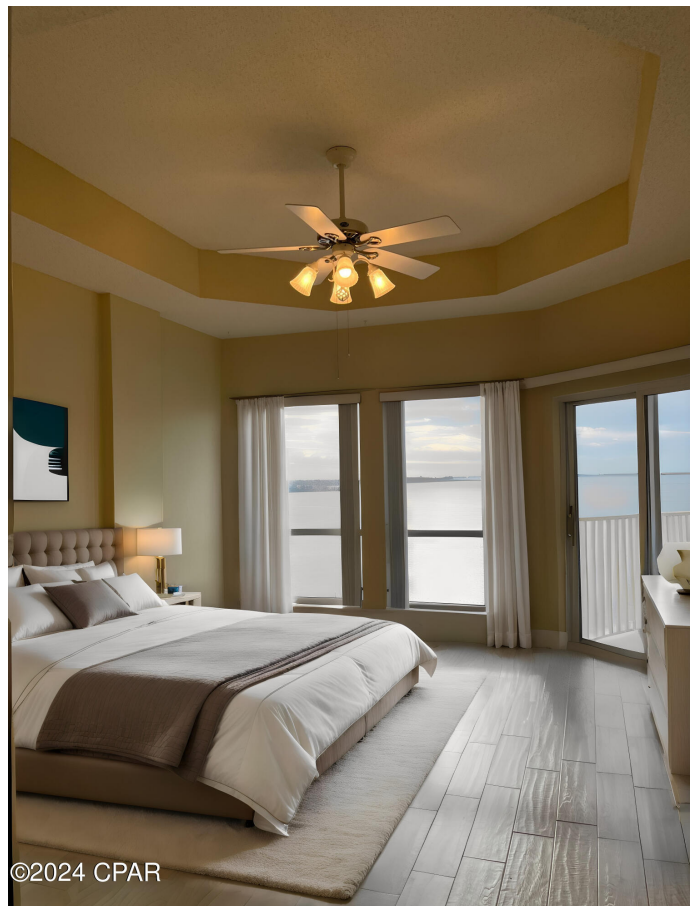
PENTHOUSE and BREATHTAKING views!

This large 3 bedroom 3 bathroom Penthouse has the best views in the whole complex. This corner unit provides you with a full view of the bay from the primary suite, living room, dinning room, or guest bedroom, and is the furthest away from the bridge. The primary suite bathroom has double vanity sinks, a large tub, and a separate shower. The other two bathrooms have a shower/tub combo and each bedroom has an oversized walk-in closet. The guest suite has its own private balcony and the primary suite has access to the balcony from the bedroom. Brand new hot water heater as of 11/14/23. This unit comes with a deeded prime parking spot in the closed-in underground parking garage, as well as the option to purchase separately: a deeded storage garage (only 21 total garages in the entire complex these are a hot commodity and are valued at \$50,000) OR the option to purchase a deeded boat slip. Don't wait, ask your favorite Realtor to book you a private showing in the Penthouse unit of Marina Bay Condos.

Built in 2001

Essential Information

MLS® #	749422
Price	\$625,000
Bedrooms	3



Bathrooms	3.00
Full Baths	3
Square Footage	1,877
Acres	0.00
Year Built	2001
Type	Residential
Sub-Type	Condominium
Style	Mid Rise
Status	Active

Community Information

Address	1600 Marina Bay Drive # 809
Area	04 - Bay County - North
Subdivision	Marina Bay Condo
City	Panama City
County	Bay
State	FL
Zip Code	32409

Amenities

Amenities	Beach Rights, Gated, Dock, Marina, Picnic Area
Features	Waterfront
Parking	Additional Parking, Garage, Guest, Circular Driveway, Deeded, Detached, Detached Carport, Electric Gate, Garage Door Opener, Gated
# of Garages	19
Garages	Additional Parking, Garage, Guest, Circular Driveway, Deeded, Detached, Detached Carport, Electric Gate, Garage Door Opener, Gated
View	Bay
Is Waterfront	Yes
Waterfront	Bay Front, Gulf Access, Waterfront
Has Pool	Yes
Pool	Fenced, In Ground, Pool, Community

Interior

Interior Features	Breakfast Bar, Coffered Ceiling(s), Kitchen Island, Split Bedrooms, Pantry
Appliances	Dishwasher, Electric Range, Electric Water Heater, Disposal, Microwave, Refrigerator
Heating	Central
Cooling	Central Air

Exterior

Exterior Features	Balcony, Fence, Pool, Dock, Handicap Accessible, Hot Tub/Spa, Outdoor Grill
Lot Description	Waterfront
Windows	Double Pane Windows

School Information

Elementary	Southport
Middle	Deane Bozeman
High	Deane Bozeman

Additional Information

Date Listed	November 17th, 2023
HOA Fees	747
HOA Fees Freq.	Monthly

Listing Details

Listing Office	Central Bay Realty and Property Management LLC
----------------	--

DISCLAIMER: IDX information is provided exclusively for consumers' personal, non-commercial use and may not be used for any purpose other than to identify prospective properties consumers may be interested in purchasing.
Information Source: Bay County Association Of REALTORS® Multiple Listing Service