

\$749,000 - 1821 Sweetgum Avenue # Lot 451, Panama City

MLS® #748949

\$749,000

4 Bedroom, 4.00 Bathroom, 2,722 sqft
Residential on 0 Acres

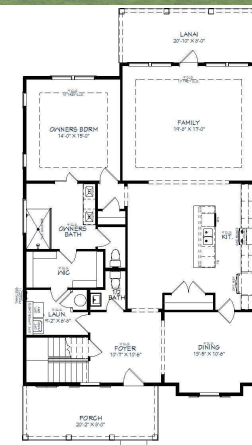
Sweetbay, Panama City, FL

CURRENTLY UNDER CONTRACT, SELLER WILL CONSIDER BACKUP OFFERS. New Construction by Fischer Homes in the beautiful SweetBay community with the Jupiter plan.

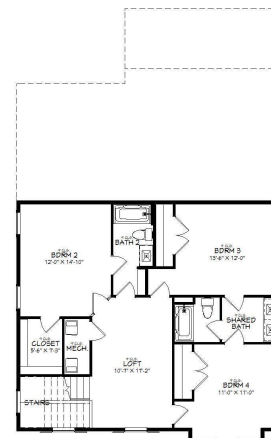
This new plan offers 4 BR plus a loft / bonus, formal dining / study and a 3-Car Garage! Entertain inside and out with the open floor plan and large covered rear lanai and front porch. The island kitchen has a large walk-in pantry, stainless appliances including a gas range, tile backsplash, and decorative range hood! The main level primary bedroom features a tray ceiling, walk-in closet connected to the laundry room, dual vanities, and large walk-in tile-to-ceiling shower. Luxury finishes include craftsman trim package, 8' tall doors throughout, and more! SweetBay is a walkable community with unrivaled amenities: dock with Bay access for kayaking, paddle boarding, and fishing, parks, resort pool complexes, basketball and sports court, miles of trails, and Publix-anchored town center and marina coming soon! New home buyers even get priority access to top-rated University Academy!



©2023 CPAR



©2023 CPAR



©2023 CPAR

Built in 2024

Essential Information

MLS® #	748949
Price	\$749,000
Bedrooms	4

Bathrooms	4.00
Full Baths	3
Half Baths	1
Square Footage	2,722
Acres	0.15
Year Built	2024
Type	Residential
Sub-Type	Detached
Style	Craftsman
Status	Active Under Contract

Community Information

Address	1821 Sweetgum Avenue # Lot 451
Area	02 - Bay County - Central
Subdivision	Sweetbay
City	Panama City
County	Bay
State	FL
Zip Code	32405

Amenities

Amenities	Beach Rights, Dock, Picnic Area
Utilities	Electricity Available, Sewer Available, Water Available, High Speed Internet Available, Natural Gas Available
Features	Landscaped
Parking	Garage, Garage Door Opener, Alley Access, Detached
# of Garages	3
Garages	Garage, Garage Door Opener, Alley Access, Detached
Has Pool	Yes
Pool	Community, In Ground

Interior

Interior	Plank, Vinyl, Tile
Interior Features	Coffered Ceiling(s), Kitchen Island, New Paint, Pantry, Recessed Lighting, Bookcases, Loft, Natural Woodwork, Other, Smart Thermostat
Appliances	Dishwasher, Disposal, Gas Range, Microwave, Plumbed For Ice Maker, Range Hood
Heating	Central, Heat Pump
Cooling	Central Air, Electric, Heat Pump, Multi Units

# of Stories	2
--------------	---

Exterior

Exterior	HardiPlank Type
Exterior Features	Sprinkler/Irrigation, Porch
Lot Description	Landscaped
Windows	Double Pane Windows
Roof	Shingle
Construction	HardiPlank Type

School Information

Elementary	University Academy
Middle	University Academy
High	Bay

Additional Information

Date Listed	November 7th, 2023
HOA Fees	363
HOA Fees Freq.	Quarterly

Listing Details

Listing Office	SweetBay Realty
----------------	-----------------

DISCLAIMER: IDX information is provided exclusively for consumers' personal, non-commercial use and may not be used for any purpose other than to identify prospective properties consumers may be interested in purchasing.
Information Source: Bay County Association Of REALTORS® Multiple Listing Service