

# \$35,000 - Lot 11 Madison Lane, Chipley

MLS® #748572

**\$35,000**

0 Bedroom, 0.00 Bathroom,  
Land on 1 Acres

Kiersten Heights, Chipley, FL

If you are looking for the perfect location in a small subdivision this is it. Located just off of Hwy 77 South of Chipley. It is approximately five miles from I-10 and about 30-40 minutes to Panama City. There are deed restriction which prohibit manufactured and modular homes. Under ground utilities, paved roaded and multiple lots are available. Photos in the listing are from multiple lots that are available.

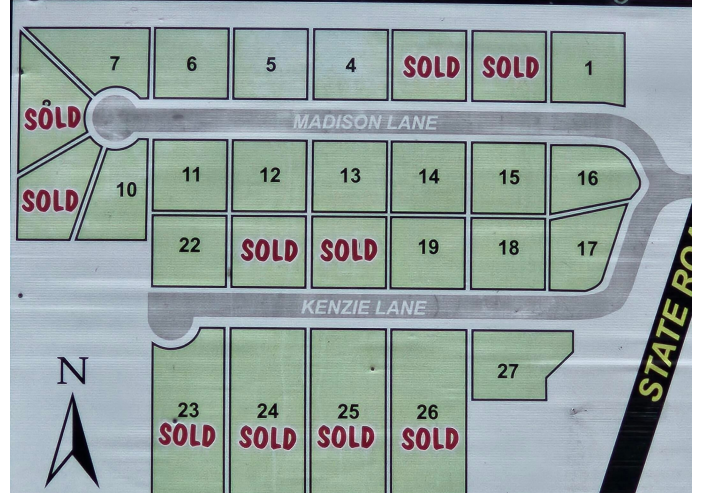
## Essential Information

MLS® #	748572
Price	\$35,000
Bathrooms	0.00
Acres	0.99
Type	Land
Sub-Type	Residential
Status	Pending

## Community Information

Address	Lot 11 Madison Lane
Area	10 - Washington County
Subdivision	Kiersten Heights
City	Chipley
County	Washington
State	FL
Zip Code	32428

## Amenities



©2023 CPAR

Features                      Wooded

## **Exterior**

Lot Description              Wooded

## **Additional Information**

Date Listed                      October 23rd, 2023

## **Listing Details**

Listing Office                      American Gold Realty

DISCLAIMER: IDX information is provided exclusively for consumers' personal, non-commercial use and may not be used for any purpose other than to identify prospective properties consumers may be interested in purchasing.  
Information Source: Bay County Association Of REALTORS® Multiple Listing Service