

\$359,000 - 26163 Ne Canton Road # Lot 15, Altha

MLS® #748001

\$359,000

4 Bedroom, 2.00 Bathroom, 1,920 sqft
Residential on 1 Acres

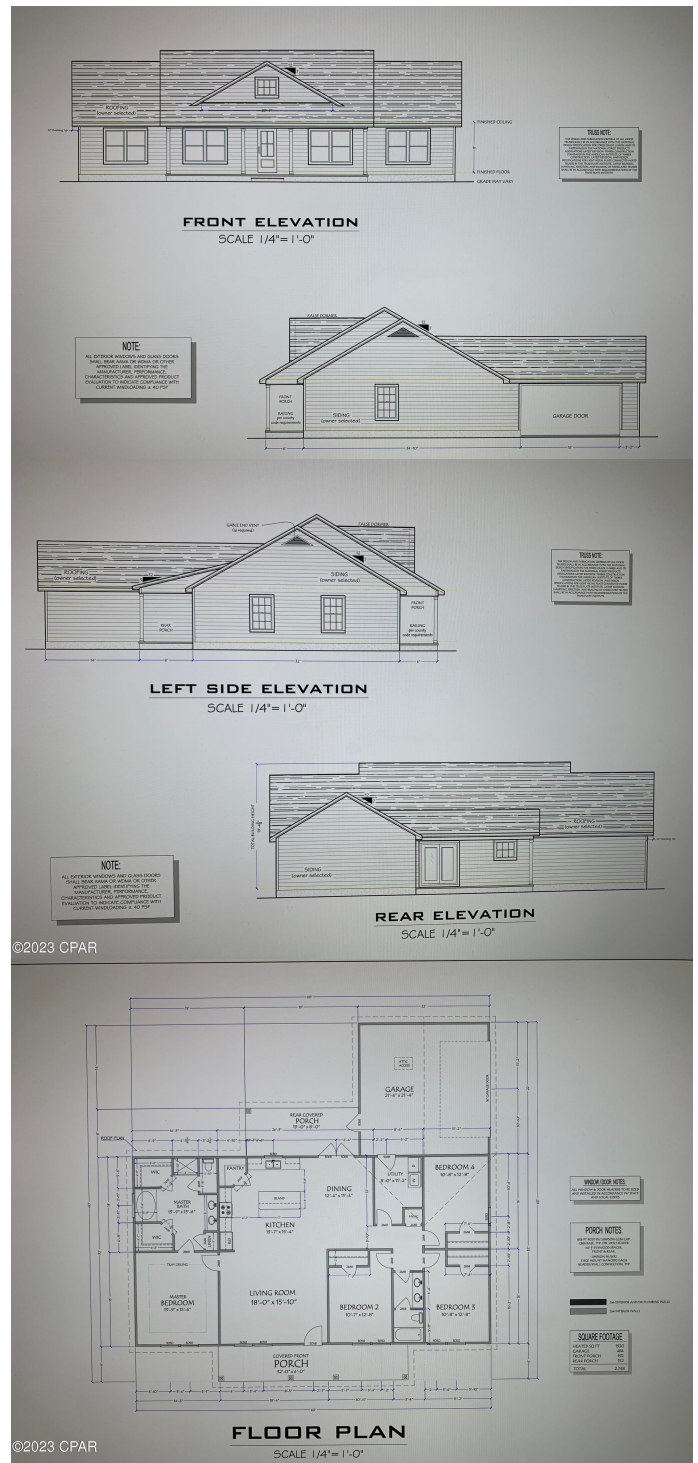
Arboles, Altha, FL

Brand New Construction. The tranquil Arboles Subdivision is nestled just minutes from downtown Altha and features a 1,920 SqFt 4 Bedroom 2 Bath Split Floor Plan home on a Half Acre Lot. This beautifully built home will have a spacious open concept Kitchen, Family Room and Dining area. Construction features include a 25 Year Architectural Style Shingle, Fiber Cement Siding, R 38 Insulation to keep those power bills down and a Side Entry 2 Car Garage. Finishes inside include Hard Wood Cabinets throughout with Granite Countertops, New Appliances, Extensive Molding throughout, Upgraded Vinyl Plank and an Upgraded Lighting Package. Master Bedroom includes Tray Ceiling with Up Lighting, and the Master Bath includes Double Walk-in Closets, Double Vanities, a Garden Tub and a Walk-in Shower. Completing the look, outside comes with a Full Landscaping Package and Front and Back Covered Porches just perfect to sit and watch the sunset. Make a call today to get specific details on this property.

Built in 2024

Essential Information

MLS® #	748001
Price	\$359,000
Bedrooms	4
Bathrooms	2.00
Full Baths	2



Square Footage	1,920
Acres	0.50
Year Built	2024
Type	Residential
Sub-Type	Detached
Style	Craftsman
Status	Pending

Community Information

Address	26163 Ne Canton Road # Lot 15
Area	06 - Calhoun County
Subdivision	Arboles
City	Altha
County	Calhoun
State	FL
Zip Code	32421

Amenities

Utilities	Electricity Available, Septic Available, Water Available
Features	Landscaped, Cul-De-Sac, Subdivision
Parking	Driveway, Garage
# of Garages	2
Garages	Driveway, Garage

Interior

Interior	Plank, Vinyl
Interior Features	Crown Molding, Coffered Ceiling(s), Kitchen Island, Pantry, Recessed Lighting, Split Bedrooms, Utility Room
Appliances	Dishwasher, Electric Water Heater, Microwave, Refrigerator, Electric Range
Heating	Central
Cooling	Central Air, Ceiling Fan(s)

Exterior

Exterior	Hardboard
Exterior Features	Porch
Lot Description	Landscaped, Cul-De-Sac, Subdivision
Roof	Shingle, Composition
Construction	Hardboard
Foundation	Slab

School Information

Elementary	Altha Public
Middle	Altha Public
High	Altha Public

Additional Information

Date Listed October 13th, 2023

Listing Details

Listing Office Florida Showcase Realty, LLC

DISCLAIMER: IDX information is provided exclusively for consumers' personal, non-commercial use and may not be used for any purpose other than to identify prospective properties consumers may be interested in purchasing.
Information Source: Bay County Association Of REALTORS® Multiple Listing Service