

\$475,000 - 8815 Thomas Drive # 605, Panama City Beach

MLS® #746949

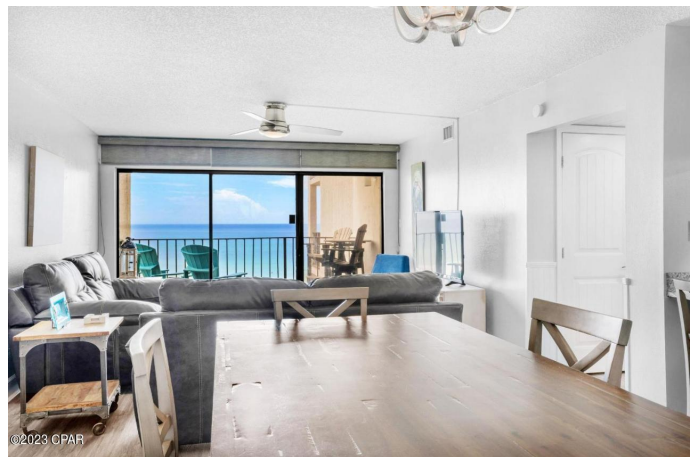
\$475,000

2 Bedroom, 2.00 Bathroom, 1,048 sqft
Residential on 0 Acres

Moondrifter, Panama City Beach, FL

LOCATION, LOCATION, LOCATION - This condo is located just steps away from the famous Tootsie's Orchid Lounge PCB relocation that is opening soon Experience the ultimate beachside lifestyle in this stunning 2-bedroom, 2-bathroom condo with a unique hall bunk area, thoughtfully updated and ready to fulfill your vacation dreams. Nestled within the tranquil confines of The Moondrifter, a highly sought-after mid-rise condo building boasting just 61 units, this coastal gem offers the perfect blend of comfort, and convenience.

Each bedroom is a tranquil retreat, offering plenty of space. The master and guest bathrooms have been beautifully updated with tile showers (shower/tub combo in Master), adding a touch of modern elegance to your daily routine. Perfect for accommodating extra guests or the little ones, the entry hallway features twin bunk beds which have access to the second bathroom. Maximum occupancy is 6 people and the Washer/Dryer are conveniently located in the hall adjacent to the kitchen area. This condo showcases an array of recent updates, including fresh interior paint that sets a bright and inviting atmosphere. A decorative drop ceiling adds a unique flair, and durable LVP (Luxury Vinyl Plank) flooring flows seamlessly throughout, ensuring easy maintenance and a sleek aesthetic. Situated on the serene East end of Panama City Beach, The Moondrifter is your gateway to paradise. With the Gulf of Mexico just steps away, you can revel in the sound of waves



crashing against the shore from your private balcony. Stroll to nearby restaurants, bars, and amusement areas, allowing you to savor the local flavors and entertainment at your leisure. Whether you're seeking a lucrative rental investment or a personal haven, this condo offers the best of both worlds. Don't miss your chance to own a piece of paradise at The Moondrifter. Contact us today to schedule a showing and make this coastal retreat your own!

Built in 1982

Essential Information

MLS® #	746949
Price	\$475,000
Bedrooms	2
Bathrooms	2.00
Full Baths	2
Square Footage	1,048
Acres	0.00
Year Built	1982
Type	Residential
Sub-Type	Condominium
Style	Mid Rise
Status	Active

Community Information

Address	8815 Thomas Drive # 605
Area	03 - Bay County - Beach
Subdivision	Moondrifter
City	Panama City Beach
County	Bay
State	FL
Zip Code	32408

Amenities

Amenities	Picnic Area
Utilities	Cable Available, Electricity Available, Sewer Available, Water Available, High

	Speed Internet Available
Parking	Parking Lot, Permit Required
Garages	Parking Lot, Permit Required
View	Gulf
Is Waterfront	Yes
Waterfront	Gulf
Has Pool	Yes
Pool	Community

Interior

Interior	Plank, Vinyl
Interior Features	Window Treatments, New Paint, Remodeled
Appliances	Dryer, Washer/Dryer Stacked, Dishwasher, Electric Range, Electric Water Heater, Disposal, Microwave, Refrigerator, Washer
Heating	Central, Electric
Cooling	Central Air, Ceiling Fan(s), Electric
# of Stories	8

Exterior

Exterior	Stucco
Exterior Features	Balcony
Construction	Stucco

School Information

Elementary	Breakfast Point
Middle	Breakfast Point
High	Arnold

Additional Information

Date Listed	September 19th, 2023
HOA Fees	970
HOA Fees Freq.	Monthly

Listing Details

Listing Office	Realty One Group Emerald Coast
----------------	--------------------------------

DISCLAIMER: IDX information is provided exclusively for consumers' personal, non-commercial use and may not be used for any purpose other than to identify prospective properties consumers may be interested in purchasing.
Information Source: Bay County Association Of REALTORS® Multiple Listing Service