

# \$74,900 - 00 Woodymarion Drive, Chipley

MLS® #736925

**\$74,900**

0 Bedroom, 0.00 Bathroom,  
Land on 0 Acres

Seminole Plantations, Chipley, FL

Lots 41&42 with 100 feet on the Lake and 200' deep. Seller can provide survey, located in Crystal Village, lake is spring fed, nice peaceful location to build your dream home.

## Essential Information

|           |             |
|-----------|-------------|
| MLS® #    | 736925      |
| Price     | \$74,900    |
| Bathrooms | 0.00        |
| Acres     | 0.45        |
| Type      | Land        |
| Sub-Type  | Residential |
| Status    | Active      |

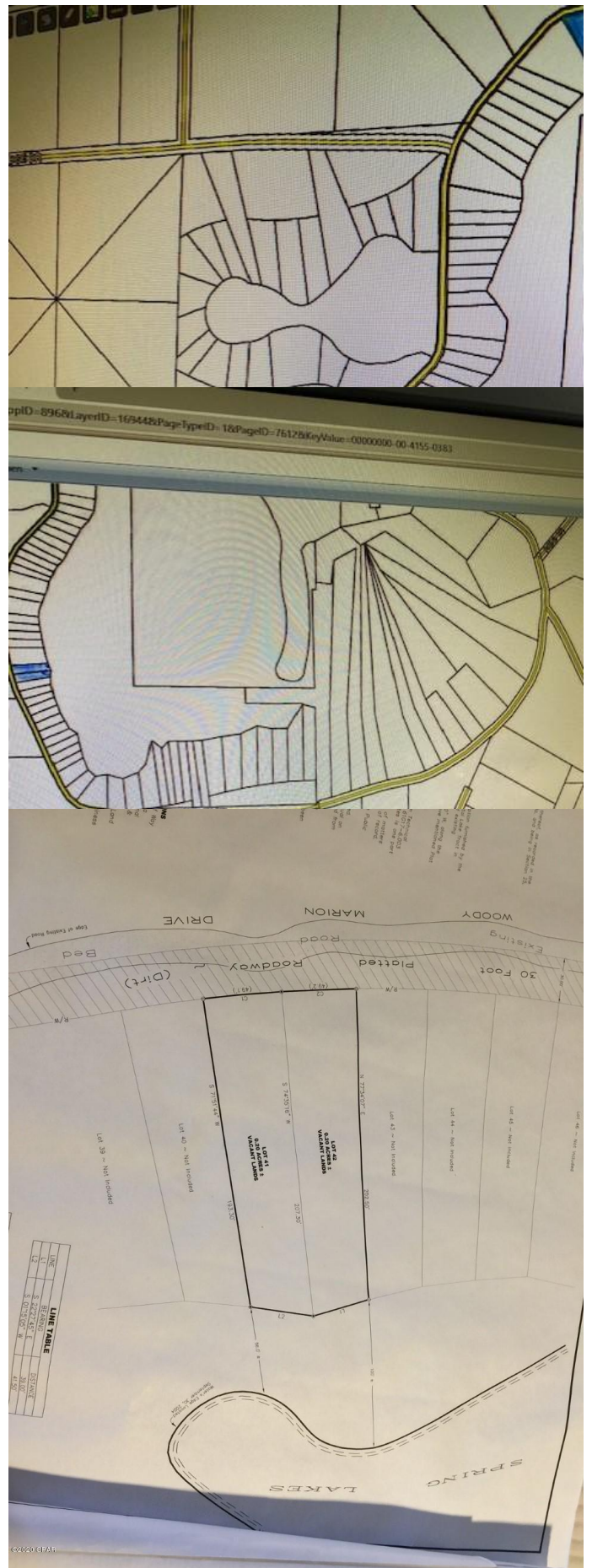
## Community Information

|             |                        |
|-------------|------------------------|
| Address     | 00 Woodymarion Drive   |
| Area        | 10 - Washington County |
| Subdivision | Seminole Plantations   |
| City        | Chipley                |
| County      | Washington             |
| State       | FL                     |
| Zip Code    | 32428                  |

## Amenities

|               |                         |
|---------------|-------------------------|
| Features      | Subdivision, Waterfront |
| View          | Pond                    |
| Is Waterfront | Yes                     |
| Waterfront    | Pond, Waterfront        |

## Exterior



|                 |                         |
|-----------------|-------------------------|
| Lot Description | Subdivision, Waterfront |
|-----------------|-------------------------|

### **School Information**

|            |                   |
|------------|-------------------|
| Elementary | Vernon Elementary |
| Middle     | Vernon            |
| High       | Vernon            |

### **Additional Information**

|             |                    |
|-------------|--------------------|
| Date Listed | January 29th, 2023 |
|-------------|--------------------|

### **Listing Details**

|                |                               |
|----------------|-------------------------------|
| Listing Office | Top Producers Real Estate Ctr |
|----------------|-------------------------------|

DISCLAIMER: IDX information is provided exclusively for consumers' personal, non-commercial use and may not be used for any purpose other than to identify prospective properties consumers may be interested in purchasing.  
Information Source: Bay County Association Of REALTORS® Multiple Listing Service