

\$420,000 - 9860 S Thomas Drive # 2019, Panama City Beach

MLS® #736750

\$420,000

1 Bedroom, 2.00 Bathroom, 1,047 sqft
Residential on 0 Acres

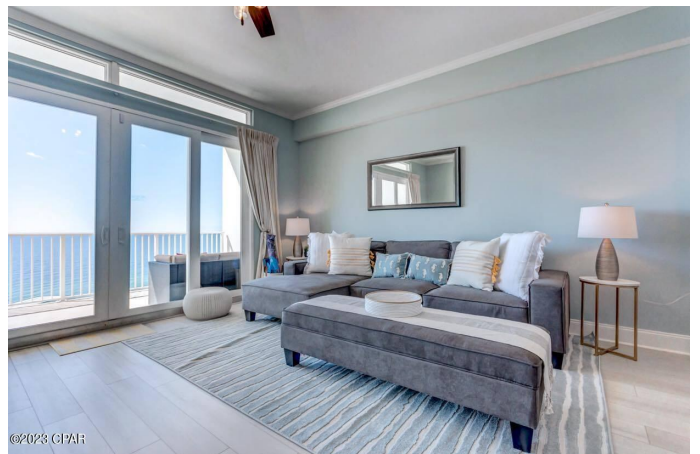
Laketown Wharf, Panama City Beach, FL

Welcome to Penthouse Unit #2019 at Laketown Wharf! This outstanding 1 bedroom, 2 bath unit has an amazing view of the Gulf of Mexico from the 20th floor vantage. The 1 bedroom plus bunk area floorplan is one of the largest of its kind in Panama City Beach. The 10-foot ceilings and accent windows above the sliders are unique features to the penthouse units, enhancing the space with light and aspect. Upgrades to the unit include quartz countertops and luxury vinyl plank flooring in the living room and primary bedroom. Modern coastal furnishings and decor are thoughtfully placed throughout the unit. This unit would make an excellent second home at the beach or vacation rental investment. This is a Superhost managed unit with many five star reviews. Schedule a time to view this unit today.

Built in 2008

Essential Information

MLS® #	736750
Price	\$420,000
Bedrooms	1
Bathrooms	2.00
Full Baths	2
Square Footage	1,047
Acres	0.00
Year Built	2008



Type	Residential
Sub-Type	Condominium
Style	High Rise
Status	Active

Community Information

Address	9860 S Thomas Drive # 2019
Area	03 - Bay County - Beach
Subdivision	Laketown Wharf
City	Panama City Beach
County	Bay
State	FL
Zip Code	32408

Amenities

Amenities	Beach Rights, Gated
Utilities	High Speed Internet Available, Sewer Available, Water Available
Parking	Additional Parking
# of Garages	2
Garages	Additional Parking
View	Gulf, Lake
Is Waterfront	Yes
Waterfront	Lake
Has Pool	Yes
Pool	In Ground, Pool

Interior

Interior	Plank, Vinyl
Interior Features	Breakfast Bar, High Ceilings, Kitchen Island, Pantry, Remodeled, Storage
Heating	Electric
Cooling	Electric

Exterior

Exterior	Concrete, Stucco
Exterior Features	Balcony, Deck, Fully Fenced, Fence, Hot Tub/Spa, Sprinkler/Irrigation, Outdoor Grill, Outdoor Shower, Pool, Handicap Accessible
Construction	Concrete, Stucco
Foundation	Pillar/Post/Pier

School Information

Elementary	Breakfast Point
Middle	Breakfast Point
High	Arnold

Additional Information

Date Listed	January 24th, 2023
HOA Fees	1931.36
HOA Fees Freq.	Quarterly

Listing Details

Listing Office	Real Broker LLC
----------------	-----------------

DISCLAIMER: IDX information is provided exclusively for consumers' personal, non-commercial use and may not be used for any purpose other than to identify prospective properties consumers may be interested in purchasing.
Information Source: Bay County Association Of REALTORS® Multiple Listing Service