

\$43,000 - Lot 78 Park Way Street, Panama City

MLS® #736248

\$43,000

0 Bedroom, 0.00 Bathroom,
Land on 1 Acres

Sandy Creek Air Park Ph II, Panama City, FL

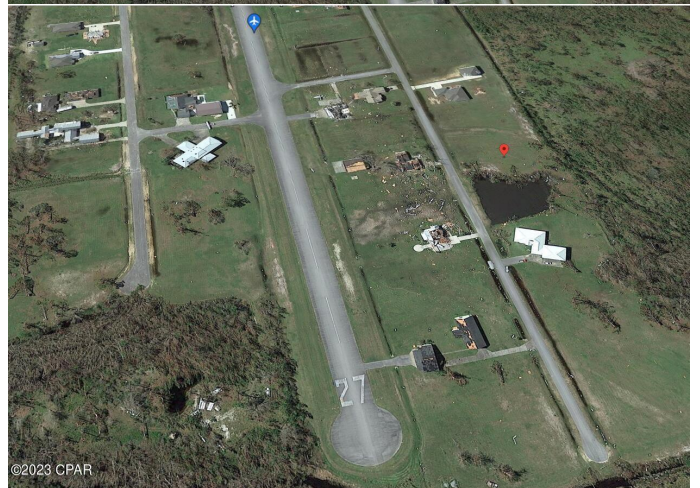
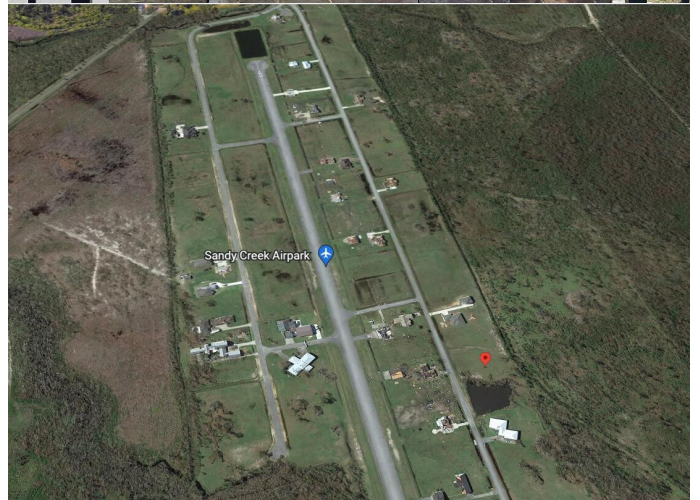
Welcome to Sandy Creek Airpark! A gated residential airpark community that features a 3,200 ft. paved runway, with lights and a beacon for night operations. The large cleared lots are big enough to build your custom dream home with a private hangar. This off runway lot features taxiway access to the runway. The very low HOA dues maintain the common areas(runway, roads, taxiways and easements). The FAA airport designator is 75FL located on the New Orleans sectional chart. Don't miss this opportunity. Please contact the listing agent for the Gate code.

Essential Information

MLS® #	736248
Price	\$43,000
Bathrooms	0.00
Acres	0.61
Type	Land
Sub-Type	Residential
Status	Active

Community Information

Address	Lot 78 Park Way Street
Area	05 - Bay County - East
Subdivision	Sandy Creek Air Park Ph II
City	Panama City
County	Bay
State	FL



©2023 CPAR

Zip Code	32404
----------	-------

Amenities

Utilities	Underground Utilities
-----------	-----------------------

School Information

Elementary	Callaway
------------	----------

Middle	Everitt
--------	---------

High	Rutherford
------	------------

Additional Information

Date Listed	January 9th, 2023
-------------	-------------------

HOA Fees	650
----------	-----

HOA Fees Freq.	Annually
----------------	----------

Listing Details

Listing Office	ERA Neubauer Real Estate Inc
----------------	------------------------------

DISCLAIMER: IDX information is provided exclusively for consumers' personal, non-commercial use and may not be used for any purpose other than to identify prospective properties consumers may be interested in purchasing.
Information Source: Bay County Association Of REALTORS® Multiple Listing Service