

\$31,200 - 7205 Lake Suzzanne Way, Panama City

MLS® #732460

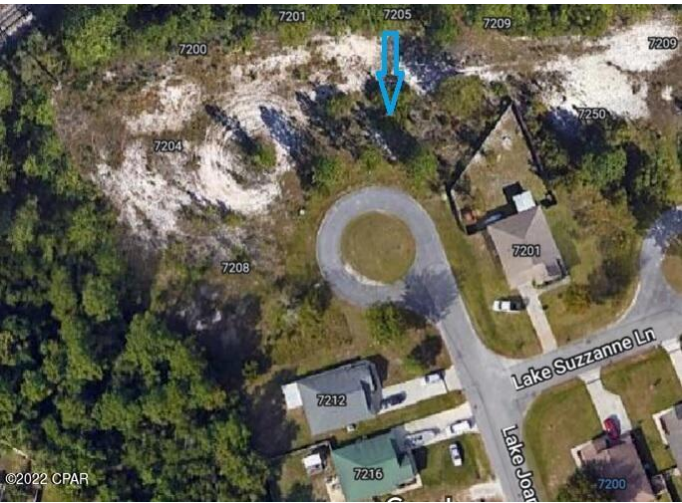
\$31,200

0 Bedroom, 0.00 Bathroom,
Land on 0 Acres

Sweetwater Village N Ph 2, Panama City, FL

Vacant residential lot on a cul-de-sac. The subdivision has a nice lake for recreational activities. seller has 3 other lots near by. You can buy one or All. Bring

Offers
!
!



Essential Information

| | |
|-----------|-------------|
| MLS® # | 732460 |
| Price | \$31,200 |
| Bathrooms | 0.00 |
| Acres | 0.17 |
| Type | Land |
| Sub-Type | Residential |
| Status | Active |

Community Information

| | |
|-------------|---------------------------|
| Address | 7205 Lake Suzzanne Way |
| Area | 05 - Bay County - East |
| Subdivision | Sweetwater Village N Ph 2 |
| City | Panama City |
| County | Bay |
| State | FL |
| Zip Code | 32404 |

Amenities

| | |
|-----------|----------------------------------|
| Utilities | Sewer Available, Water Available |
| Features | Cul-De-Sac |

Exterior

| | |
|-----------------|------------|
| Lot Description | Cul-De-Sac |
|-----------------|------------|

School Information

| | |
|------------|---------------|
| Elementary | Tommy Smith |
| Middle | Merritt Brown |
| High | Rutherford |

Additional Information

| | |
|----------------|-------------------|
| Date Listed | August 26th, 2022 |
| HOA Fees | 100 |
| HOA Fees Freq. | Semi-Annually |

Listing Details

| | |
|----------------|----------------------------|
| Listing Office | Global Contact Realty, Inc |
|----------------|----------------------------|

DISCLAIMER: IDX information is provided exclusively for consumers' personal, non-commercial use and may not be used for any purpose other than to identify prospective properties consumers may be interested in purchasing.
Information Source: Bay County Association Of REALTORS® Multiple Listing Service