

\$1,800,000 - A Street, Panama City

MLS® #715911

\$1,800,000

0 Bedroom, 0.00 Bathroom,
Land on 32 Acres

[No Recorded Subdiv], Panama City, FL

Opportunity abounds with this 32 acre parcel off Hwy 231. Gorgeous parcel with two catfish ponds and 7 acres of commercial frontage. Parcels 11907-000-000 and 11902-000-000 are R-5 zoning for parcels means the sky is the limit for development options. Call today to view this one of a kind property.

Essential Information

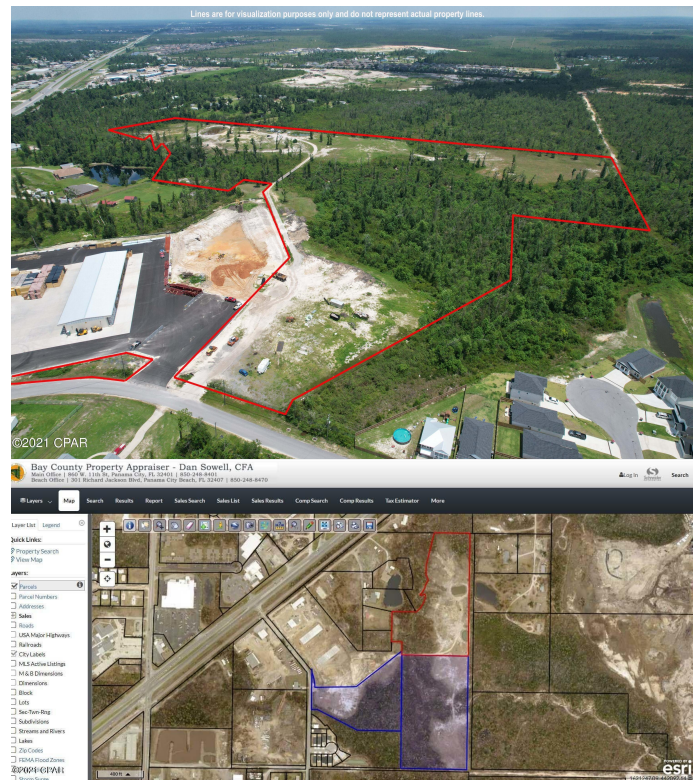
MLS® #	715911
Price	\$1,800,000
Bathrooms	0.00
Acres	32.00
Type	Land
Sub-Type	Commercial
Status	Active

Community Information

Address	A Street
Area	02 - Bay County - Central
Subdivision	[No Recorded Subdiv]
City	Panama City
County	Bay
State	FL
Zip Code	32404

Amenities

Utilities	Electricity Available, Sewer Available, Water Available
Features	Acreage



View	Creek/Stream
Is Waterfront	Yes
Waterfront	Stream

Exterior

Lot Description	Acreage
-----------------	---------

School Information

Elementary	Cedar Grove
Middle	Merritt Brown
High	Bay

Additional Information

Date Listed	June 2nd, 2021
-------------	----------------

Listing Details

Listing Office	EXP Realty LLC
----------------	----------------

DISCLAIMER: IDX information is provided exclusively for consumers' personal, non-commercial use and may not be used for any purpose other than to identify prospective properties consumers may be interested in purchasing.
Information Source: Bay County Association Of REALTORS® Multiple Listing Service