

\$10,500,000 - 130 Lagrange Road, Freeport

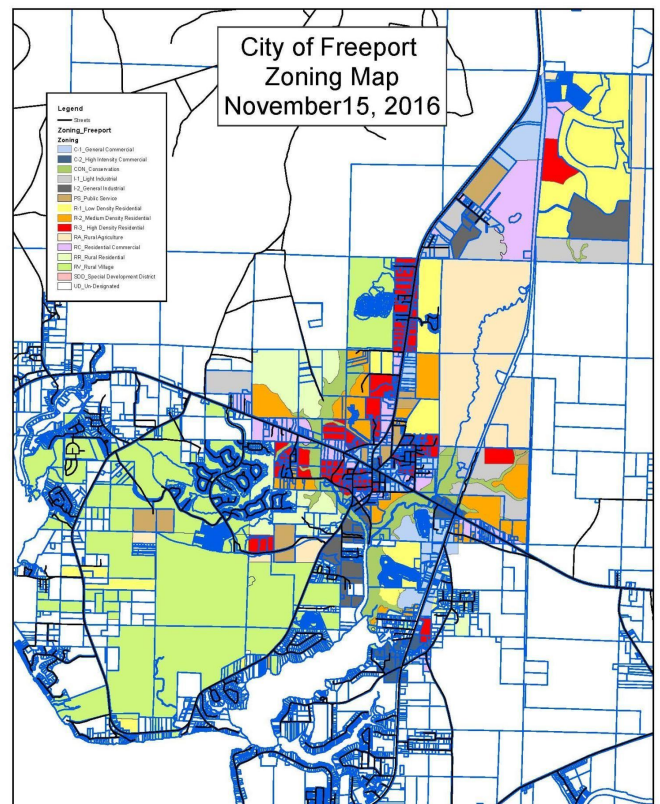
MLS® #713035

\$10,500,000

0 Bedroom, 0.00 Bathroom,
Land on 34 Acres

[No Recorded Subdiv], Freeport, FL

This 34 +/- acre development is located approximately 1.7 miles south of State Hwy 20 on US Hwy 331 South and approximately 3 miles north of the Choctawhatchee Bay from the Clyde B. Wells Bridge. Property currently has plans for development as RV Park with Marina, restaurant and commercial outparcels etc. Agent has engineering and construction plans available with signed NDA. Potential opportunity for commercial and recreational development with access to the Choctawhatchee Bay along a growing corridor of Walton County with average AADT between 17-18K cars per day. This development consists of 10 parcels. perfectly situated in a HIGH TRAFFIC corridor with potential for marina, recreational use, commercial, etc.



Essential Information

MLS® #	713035
Price	\$10,500,000
Bathrooms	0.00
Acres	34.00
Type	Land
Sub-Type	Commercial
Status	Pending

Community Information

Address	130 Lagrange Road
Area	12 - Walton County

Produced by the Planning Department of the City of Freeport.
This map is for general reference only.
Data sources that appear on this map
may or may not be accurate, current, or otherwise reliable.
THIS MAP IS NOT A SURVEY AND
IS NOT TO BE USED FOR NAVIGATION.

0.0 0.5 Miles



Subdivision	[No Recorded Subdiv]
City	Freeport
County	Walton
State	FL
Zip Code	32439

Amenities

Utilities	Water Available
Is Waterfront	Yes
Waterfront	Bay Front, Gulf Access

Additional Information

Date Listed	April 14th, 2021
-------------	------------------

Listing Details

Listing Office	RC Real Estate Group
----------------	----------------------

DISCLAIMER: IDX information is provided exclusively for consumers' personal, non-commercial use and may not be used for any purpose other than to identify prospective properties consumers may be interested in purchasing.
Information Source: Bay County Association Of REALTORS® Multiple Listing Service