

\$1,425,000 - County Road 28, Summerdale

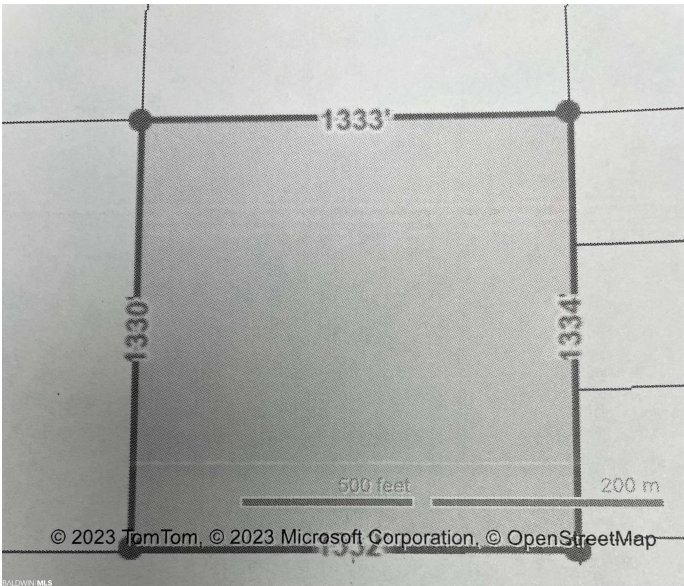
MLS® #348613

\$1,425,000

0 Bedroom, 0.00 Bathroom,
Land on 40 Acres

N/A, Summerdale, AL

FOR COMP PURPOSES ONLY!! Farm Land.
Three PIN #s make up the 121 Acres - 35741,
117314, 35766.



Essential Information

MLS® #	348613
Price	\$1,425,000
Sold Price	\$1,425,000
Closed Date	2023-07-05
Bathrooms	0.00
Acres	40.00
Type	Land
Sub-Type	Unimproved Land
Status	Closed

Community Information

Address	County Road 28
Area	Central Baldwin County
Subdivision	N/A
City	Summerdale
County	Baldwin
State	AL
Zip Code	36580

Amenities

Utilities	None
View	Other-See Remarks
Waterfront	No Waterfront

Exterior

Lot Description Land, 100+ acres

School Information

Elementary Summerdale School

High Foley High

Listing Details

Listing Office Coldwell Banker Coastal Realty

The data relating to real estate for sale on this website comes from the Baldwin County Association Of REALTORS®. The information being provided is for consumers' personal, non-commercial use and may not be used for any purpose other than to identify prospective properties consumers may be interested in purchasing. Information deemed reliable but not guaranteed.

Listing information last updated on May 9th, 2024 at 5:45am CDT