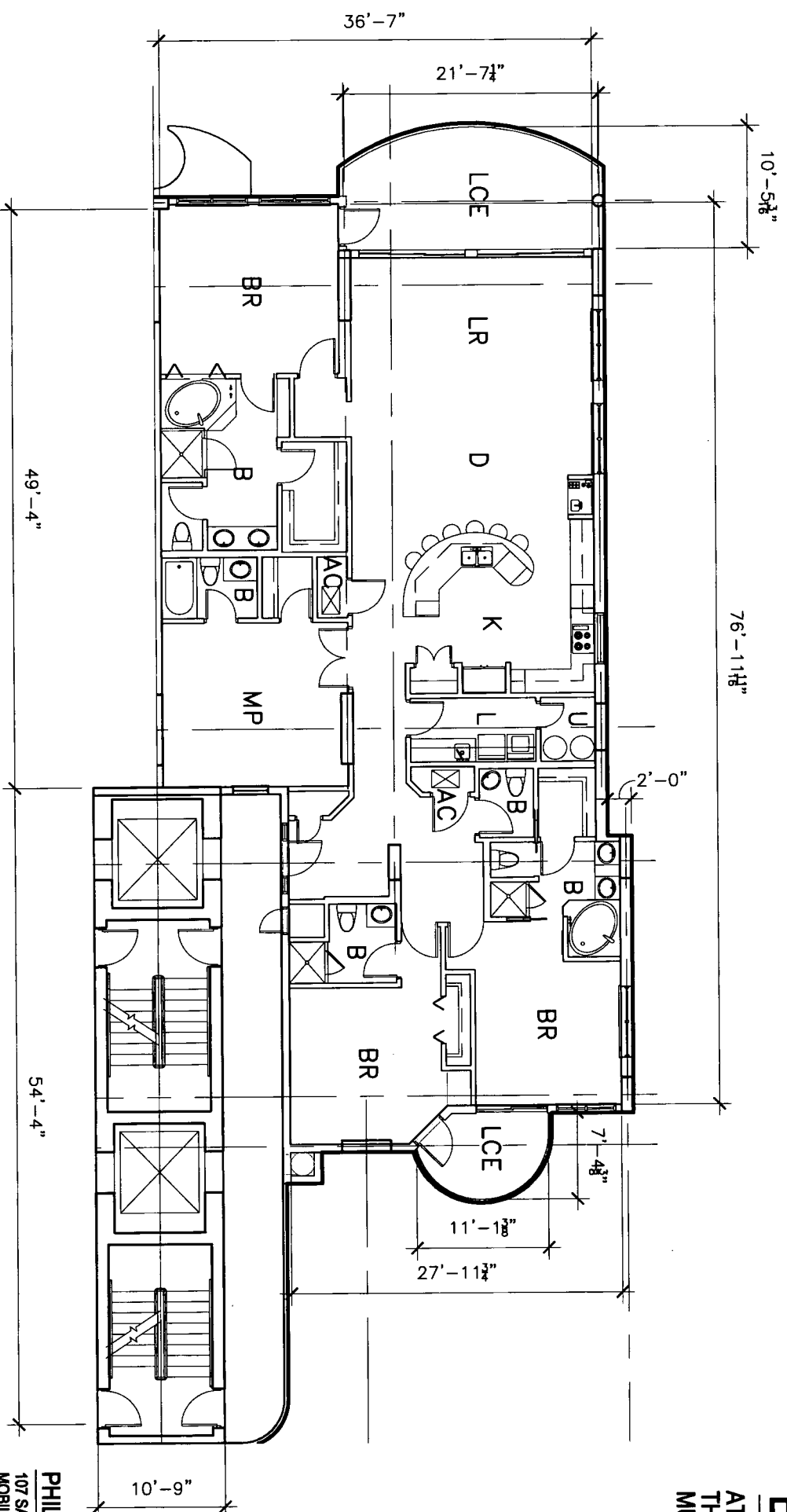


**EXHIBIT "A"**  
 ATTACHED TO AND MADE A PART OF  
 THE DECLARATION OF CONDOMINIUM OF  
 MUSTIQUE, A CONDOMINIUM.

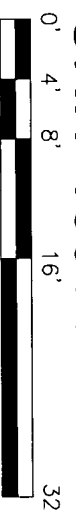


**MUSTIQUE**  
 A CONDOMINIUM  
 GULF SHORES, ALABAMA

PHILLIP N. OWENS & ASSOC., L.L.C.  
 107 SAINT FRANCIS ST., SUITE 1702 PH (251) 652-2823  
 MOBILE, ALABAMA 36602 FAX (251) 652-2824



**UNIT 1001 PLAN** 2,511 SQ. FT.



ALL OF THE REAL PROPERTY DESCRIBED ON THESE PLANS  
 ARE SUBJECT TO DEVELOPMENT RIGHTS AND SPECIAL  
 DECLARANT RIGHTS AS SET OUT IN THE DECLARATION OF  
 CONDOMINIUM OF MUSTIQUE, A CONDOMINIUM.

**NOTES:**

THIS IS TO CERTIFY THAT ALL OF THE CONDOMINIUM PROPERTY AND ALL STRUCTURES OF THE  
 CONDOMINIUM ARE LOCATED WITHIN FLOOD ZONES "VE"(3'), "VE"(12), "AE"(10'), AND "AE"(11'), AS  
 DETERMINED BY THE U.S. DEPARTMENT OF HOUSING AND URBAN DEVELOPMENT. ALL OF THE REAL  
 PROPERTY DESCRIBED IN THE PLANS IS SUBJECT TO SPECIAL DECLARANT RIGHTS AS SET OUT IN THE  
 DECLARATION OF CONDOMINIUM OF MUSTIQUE, A CONDOMINIUM.

**NOT TO SCALE**

**CDD-38**