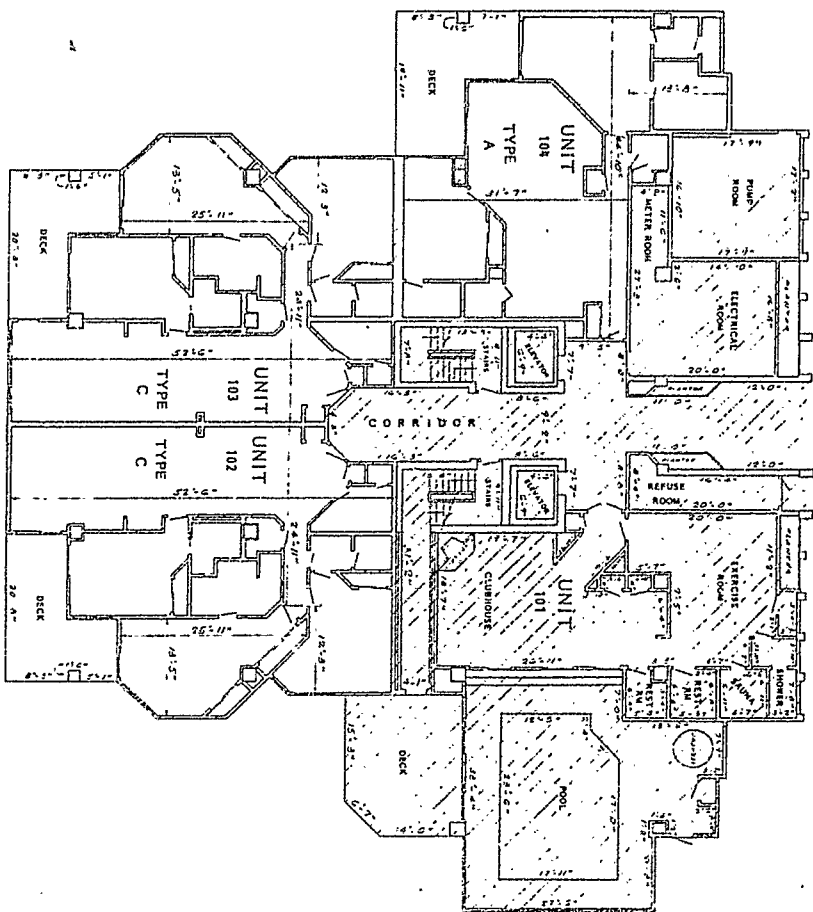
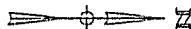


to  
DECLARATION OF CONDOMINIUM  
FOUR SEASONS OF ROMAR BEACH

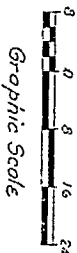


**GROUND FLOOR**  
FLOOR ELEV. 20.5' M.S.L.  
CEILING ELEV. 28.1' M.S.L.  
SCALE: 1/8" = 10'

H.S.C. 59 AOE 1418



IT IS MY OPINION THAT THE  
INDICATED AREA OF THE ABOVE  
PROPERTY LIES IN ZONE C 158  
FLOOR BOARDS ACCORDING TO THE  
FLOOR BOARDS AND THE UNIT AND  
CONVICTORY NO. 1187 PARK, NO.  
818, SURVEY G. WAS REVISED  
JANUARY 1, 1975.



Graphic Scale

STATE OF ALABAMA  
COUNTY OF MADISON  
THE UNDERSIGNED, JAMES T. CHAFFMAN, A REGISTERED ENGINEER  
IN THE STATE OF ALABAMA, NUMBER 3711, PURSUANT TO SECTION  
36-4-4, CODE OF ALABAMA, 1961, HEREBY CERTIFY THAT THE DRAWINGS  
36-4-4, CODE OF ALABAMA, 1961, HEREBY CERTIFY THAT THE DRAWINGS  
SHOWING OF PAGES 2 THROUGH 22 INCLUDING ATTACHED TO AND  
HEREBY REFERRED TO AS THE DECLARATION OF CONDOMINIUM, FLOOR  
OF ROMAR BEACH, A CONDOMINIUM, ONLY AND ACCURATELY SHOWS  
THE LAYOUT, LOCATIONS, UNIT NUMBERS AND DIMENSIONS IN SUFFI-  
CIENT DETAIL TO IDENTIFY THE COMMON ELEMENTS AND PRIVATE ELE-  
MENTS COMPRISING SUCH UNITS OF FOUR SEASONS OF ROMAR BEACH,  
A CONDOMINIUM, AS BUILT.

*James T. Chaffman*  
REGISTERED ENGINEER  
4-13-87



THE ABOVE UNITS ARE LOCATED ON THE FOLLOWING DESCRIBED PROPERTY:  
LEGAL DESCRIPTION:  
BEGINNING AT THE NORTHEAST CORNER OF LOT 3 INDUSTRIAL SUBDIVISION  
AS RECORDED IN MAP BOOK 1, PAGE 118, PRIVATE RECORDS, MADISON  
COUNTY, ALABAMA, RUN THENCE N 37° 12' 00" E ALONG THE SOUTH RIGHT  
OF WAY OF ALABAMA HIGHWAY 118, 18 FEET; RUN THENCE S 87° 59' 00"  
19 FEET; RUN THENCE S 87° 59' 00" E, 57 FEET; RUN THENCE S 87° 59' 00"  
15.5 FEET; RUN THENCE S 87° 59' 00" E, 18.5 FEET; RUN THENCE S 87° 59' 00"  
19 FEET; RUN THENCE S 87° 59' 00" E, 18 FEET; RUN THENCE S 87° 59' 00"  
19 FEET, MORE OR LESS TO THE NORTH MARSH OF THE COUL OF SECTION  
108 THENCE IN A SOUTHWESTLY DIRECTION ALONG THE NORTH MARSH  
OF SAID LOT 3, 120 FEET; RUN THENCE ON A CURVE TO THE LEFT TO THE  
OF SAID LOT 3, 120 FEET; RUN THENCE ON A CURVE TO THE LEFT TO THE  
OF SAID LOT 3, 120 FEET; RUN THENCE ON A CURVE TO THE LEFT TO THE  
THE NORTHEAST CORNER OF SAID LOT 3, AND THE POINT OF BEGINNING.  
ALL BEING 1.4 ACRES, MORE OR LESS, AND LYING IN SECTION 9, TOWNSHIP  
31N, RANGE 3 EAST, MADISON COUNTY, ALABAMA.

- CROSS HATCHED AREA REPRESENTS COMMON ELEMENTS.
- NO UNITS COMMON ELEMENTS EXIST.
- NON-CROSS HATCHED AREA REPRESENTS PRIVATE ELEMENTS.

PHASE I  
GROUND FLOOR

FOUR SEASONS OF ROMAR BEACH  
A CONDOMINIUM

Prepared by: *James T. Chaffman*  
Checked by: *James T. Chaffman*  
Date: 4-13-87  
P.O. Box 85  
Vine Summit, Inc.  
Civil Survey, AL 36182  
Sec. 17-1-5, Rte. 1, Oakdale County, AL 36182