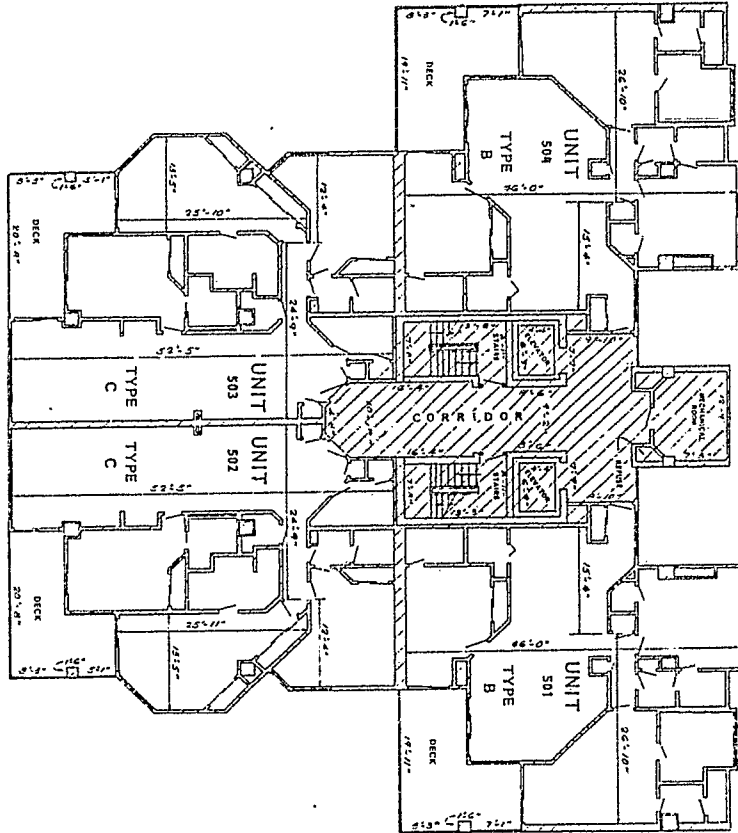
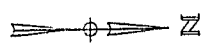


to
DECLARATION OF CONDOMINIUM
FOUR SEASONS OF ROMAR BEACH



FIFTH FLOOR
FLOOR ELEV., 37'-0" M.S.L.
CEILING ELEV., 66'-0" M.S.L.
SCALE: 1/8" = 1'-0"

MSC. 59 AGE 1422



Graphic Scale

IT IS MY OPINION THAT THE FOREGOING ARE A TRUE AND CORRECT REPRESENTATION OF THE CONDOMINIUM DESCRIBED IN THESE PLANS AS DEDICATED AND SET APART BY ME AS INDICATED IN THE PLANS. IN WITNESS WHEREOF, I HAVE HEREUNTO SET MY HAND AND SEAL OF OFFICE AT JACKSONVILLE, FLORIDA, THIS 14TH DAY OF JANUARY, 1985.

STATE OF ALABAMA
COUNTY OF BALDWIN

THE UNDERSIGNED, JAMES T. CHAPMAN, A REGISTERED ENGINEER IN THE STATE OF ALABAMA, NUMBER 2931, PURSUANT TO SECTION 35-4-4, CODE OF ALABAMA, 1953, HEREBY CERTIFY THAT THE DIMENSIONS AND AREAS OF THE CONDOMINIUM DESCRIBED IN THE DECLARATION OF CONDOMINIUM OF FOUR SEASONS OF ROMAR BEACH, A CONDOMINIUM, ONLY AND ACCORDING HERETO THE LAYOUT, LOCATIONS, UNIT DIMENSIONS AND DIMENSIONS IN SURFACE DETAIL TO INDICATE THE COMMON ELEMENTS AND PRIVATE ELEMENTS COMPRISING SUCH UNITS OF FOUR SEASONS OF ROMAR BEACH, A CONDOMINIUM, AS RUILT.

James T. Chapman
REGISTERED ENGINEER
4-23-87 DATE



THE ABOVE UNITS ARE LOCATED ON THE FOLLOWING DESCRIBED PRIVATE LEGAL DESCRIPTION:

BEINGING AT THE SOUTHWEST CORNER OF LOT 2 WESTSIDE SUBDIVISION AS RECORDED IN MAP BOOK 1, PAGE 115, IRONDALE RECORD, BALDWIN COUNTY, ALABAMA, RUN THENCE N 70°-24' E ALONG THE SOUTH RIGHT OF WAY OF ALABAMA HIGHWAY 101, 104 FEET; RUN THENCE S 45°-34' E, 20 FEET; RUN THENCE S 89°-39' W, 47 FEET; RUN THENCE N 89°-39' W, 47 FEET; RUN THENCE S 89°-39' W, 104 FEET; RUN THENCE S 89°-39' W, 40 FEET; RUN THENCE S 89°-39' W, 104 FEET; VORT ON LESS TO THE NORTH VERTICION OF THE CORNER OF THE CORNER OF SECTION 15, TOWNSHIP 17 N, RANGE 12 E, CORNER OF SAID LOT 2, RUN THENCE N 89°-39' W, 20 FEET, MORE OR LESS, TO THE WEST LINE OF SAID LOT 2, RUN THENCE N 89°-39' W, 20 FEET, MORE OR LESS, TO THE NORTHWEST CORNER OF SAID LOT 2, AND THE POINT OF BEGINNING, ALL BEING 14 ACRES, MORE OR LESS, AND LYING IN SECTION 15, TOWNSHIP 17 NORTH, RANGE 12 EAST, BALDWIN COUNTY, ALABAMA.

PHASE I
FIFTH FLOOR

FOUR SEASONS OF ROMAR BEACH

DATE: 11/12/84
DRAWN BY: DANIEL B. SHELLEY, ALABAMA ARCHITECTURAL BOARD NO. 6815
CHECKED BY: JAMES T. CHAPMAN, ALABAMA ARCHITECTURAL BOARD NO. 2931
SCALE: 1/8" = 1'-0"

CROSS-HATCHED AREA REPRESENTS COMMON ELEMENTS
 HORIZONTAL LINE REPRESENTS PRIVATE ELEMENTS
 NON-CROSS-HATCHED AREA REPRESENTS PRIVATE ELEMENTS