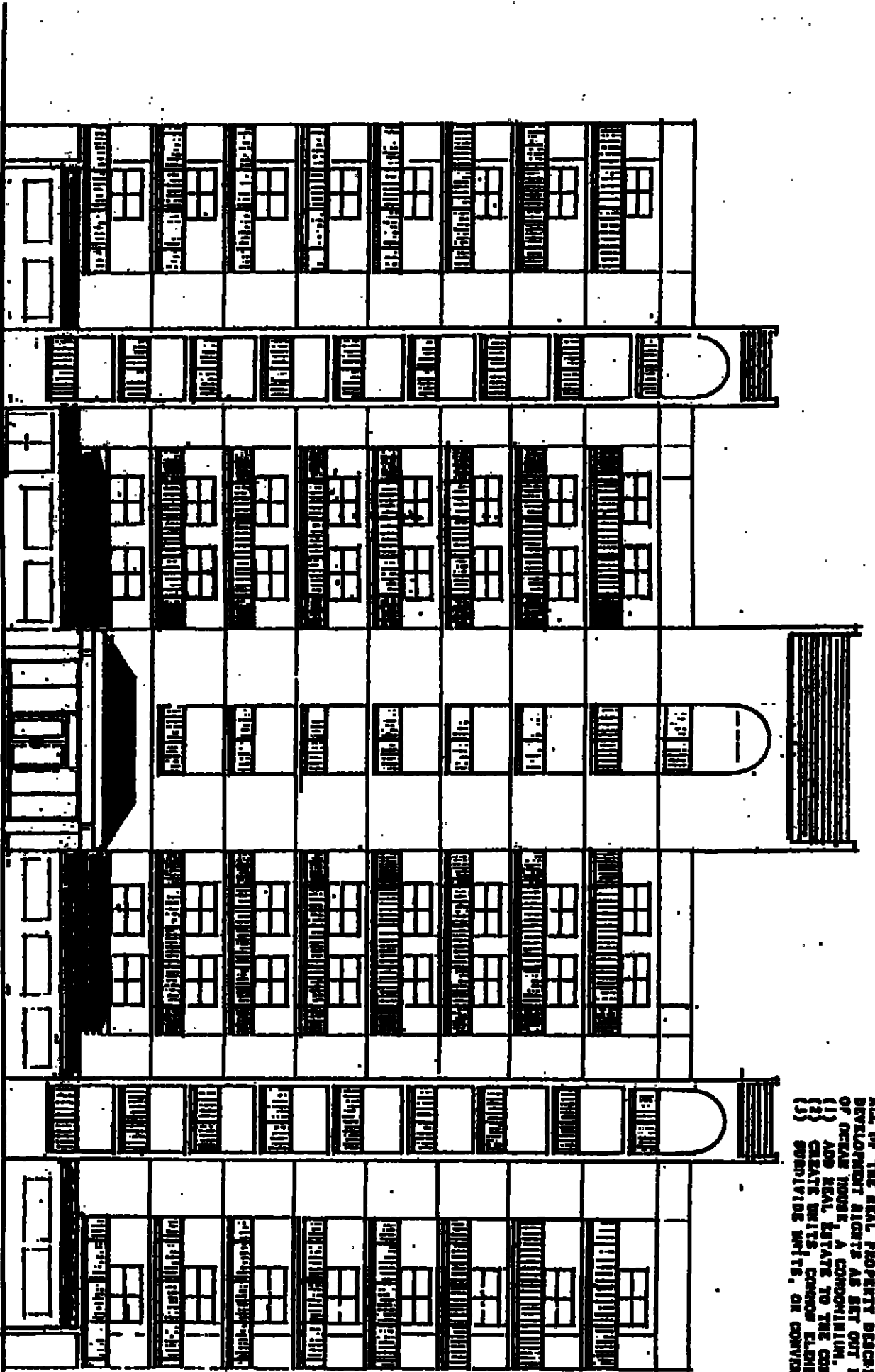


EXHIBIT "C"
 page 5
 Attached to Declaration of Condominium of
 OCEAN HOUSE, A CONDOMINIUM

MISC0082 PAGE 0039



OCEAN HOUSE, A CONDOMINIUM
 SOUTH ELEVATION
 PHASE I

ALL OF THE REAL PROPERTY DESCRIBED ON THE PLANS IS SUBJECT TO
 DEVELOPMENT RIGHTS AS SET OUT IN THE DECLARATION OF CONDOMINIUM
 OF OCEAN HOUSE, A CONDOMINIUM. THE DEVELOPER RESERVES THE RIGHT TO:
 (1) ADD REAL ESTATE TO THE CONDOMINIUM;
 (2) CREATE UNITS, COMMON ELEMENTS, OR LIMITED COMMON ELEMENTS;
 (3) RECONSTRUCT UNITS, OR CONVERT UNITS TO COMMON ELEMENTS.

- LEVEL 9 80.6 MSL
- LEVEL 8 71.9 MSL
- LEVEL 7 63.3 MSL
- LEVEL 6 54.7 MSL
- LEVEL 6 46.1 MSL
- LEVEL 4 37.5 MSL
- LEVEL 3 28.9 MSL
- LEVEL 2 19.3 MSL
- LEVEL 1 10.7 MSL