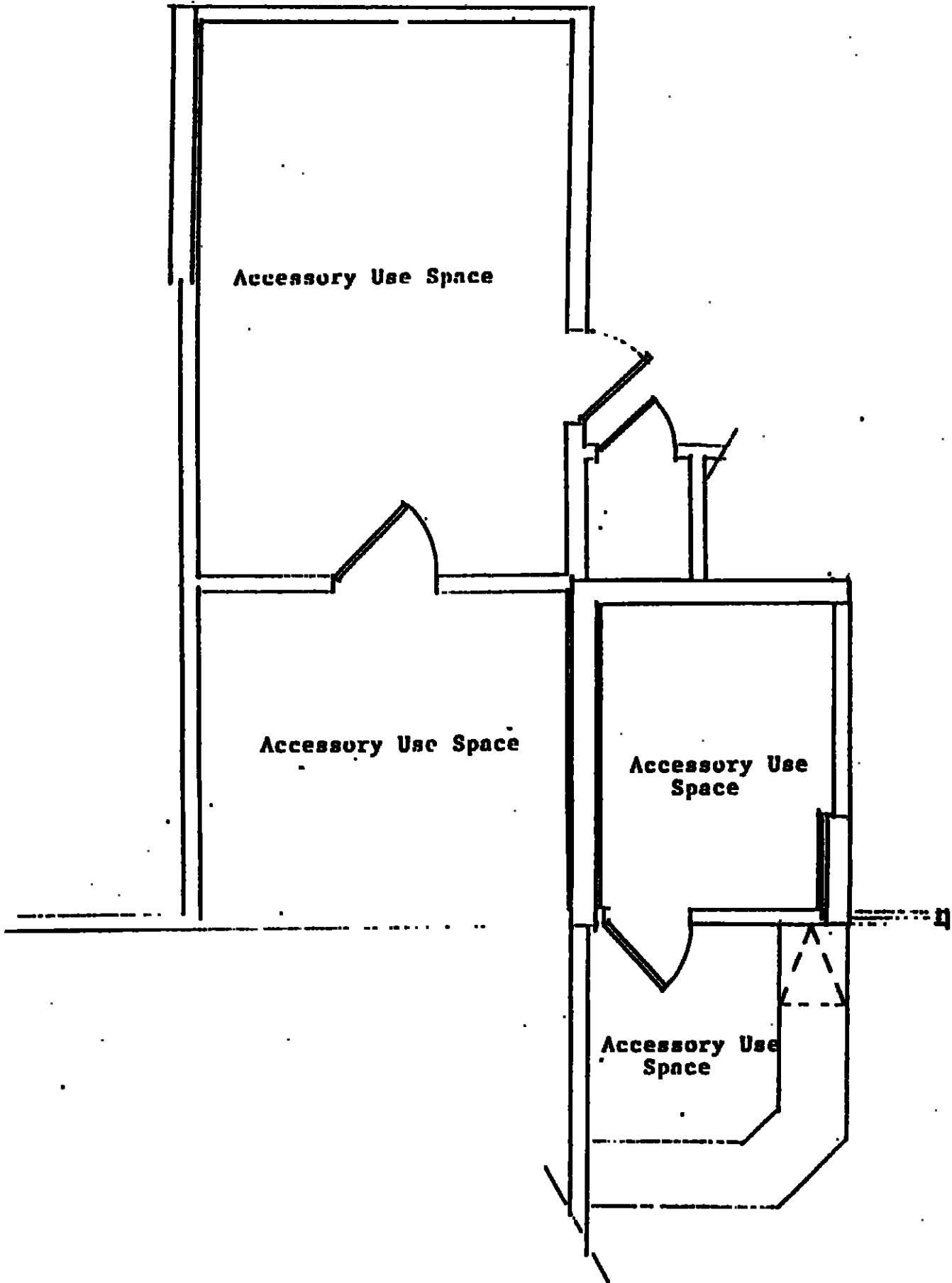


EXHIBIT "C"

page 12

**Attached to Declaration of Condominium of
OCEAN HOUSE, A CONDOMINIUM**



MISC0082 PML 0046

COMMERCIAL UNIT - 4C-1100

PHASE I

OCEAN HOUSE, A CONDOMINIUM

ALL OF THE REAL PROPERTY DESCRIBED ON THE PLANS IS SUBJECT TO DEVELOPMENT RIGHTS AS SET OUT IN THE DECLARATION OF CONDOMINIUM OF OCEAN HOUSE, A CONDOMINIUM. THE DEVELOPER RESERVES THE RIGHT TO:
(1) ADD REAL ESTATE TO THE CONDOMINIUM;
(2) CREATE UNITS, COMMON ELEMENTS, OR LIMITED COMMON ELEMENTS;
(3) SUBDIVIDE UNITS, OR CONVERT UNITS TO COMMON ELEMENTS.