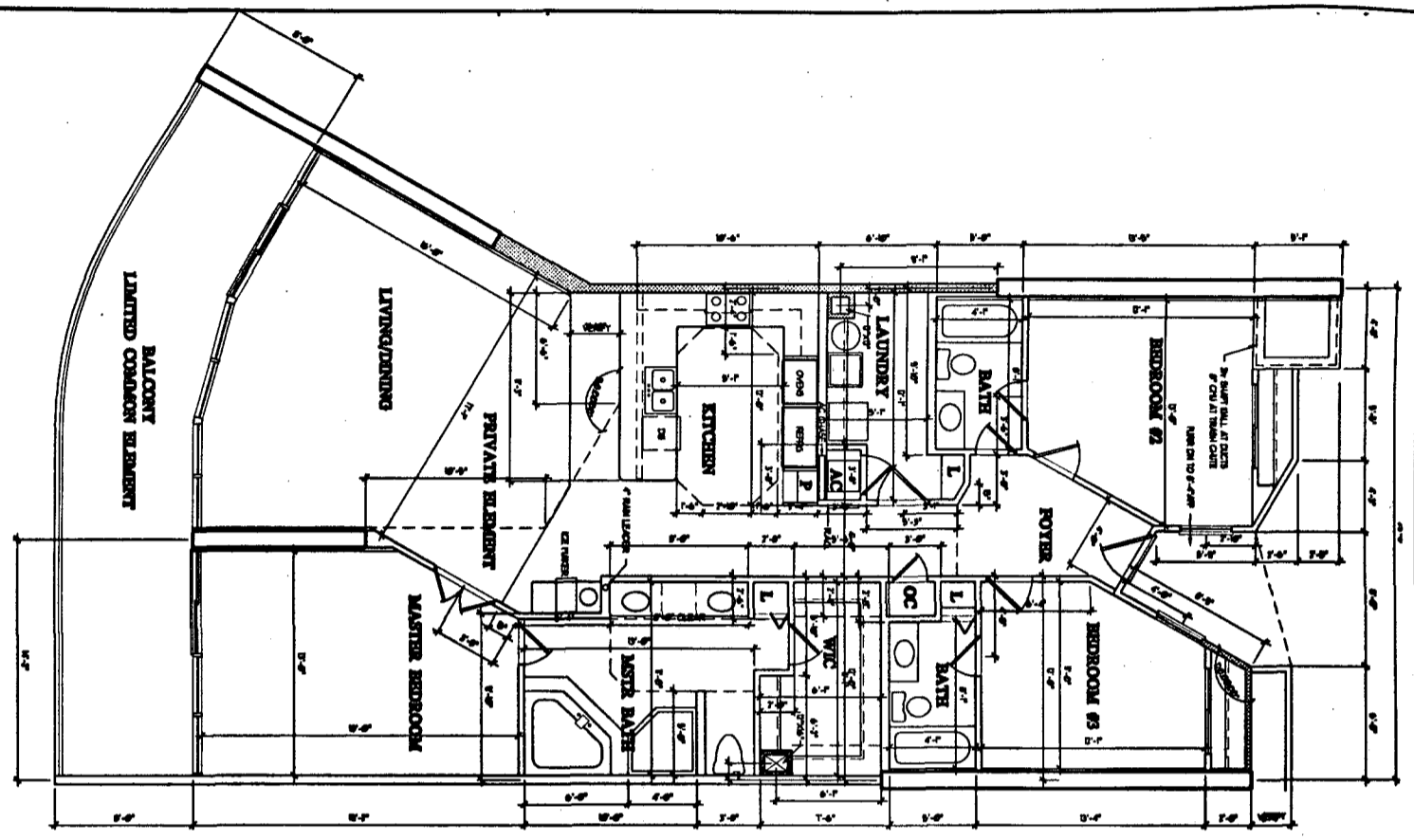
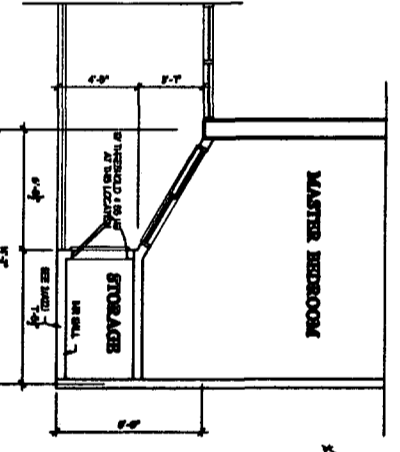


APR 22 1958



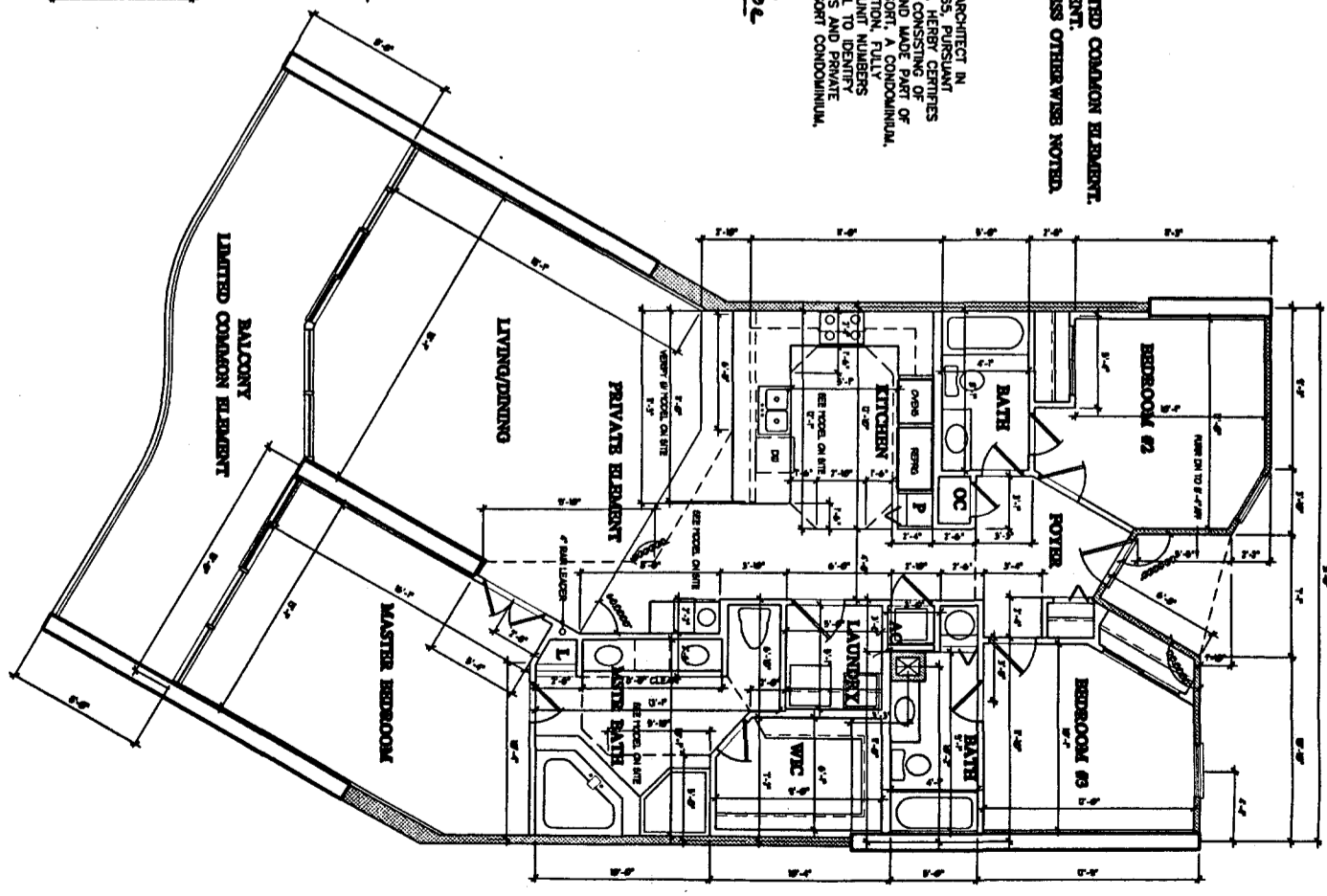
TYPICAL REVERSED FLOOR PLAN UNIT A

17'6" HAVATCOOL  
37'0" BALCONY  
209'6" TOTAL



MODIFICATIONS @ A'

19'6" HAVATCOOL  
28'6" BALCONY/TOR  
209'6" TOTAL



TYPICAL REVERSED FLOOR PLAN UNIT B

17'6" HAVATCOOL  
37'0" BALCONY  
209'6" TOTAL

Revised 5/17/58 Page 22 of 23

THE UNDERSIGNED, HENRY MORRIS, A REGISTERED ARCHITECT IN THE STATE OF ALABAMA, REGISTRATION NUMBER 2865, PURSUANT TO SECTION 35-8A-209, CODE OF ALABAMA, 1975, HEREBY CERTIFIES THAT THE BEST OF HIS KNOWLEDGE, DRAWINGS CONSISTING OF PLANS, SPECIFICATIONS, CONTRACT DOCUMENTS AND SCHEDULES OF THE DECLARATION OF CONDOMINIUM OF CARIBE RESORT CONDOMINIUM, CONTAINS ALL INFORMATION REQUIRED BY SAID SECTION, FULLY AND ACCURATELY DEPICT THE LAYOUT, LOCATIONS, UNIT NUMBERS AND APPROXIMATE DIMENSIONS IN SUFFICIENT DETAIL TO IDENTIFY THE COMMON ELEMENTS, LIMITED COMMON ELEMENTS AND PRIVATE ELEMENTS COMPRISING SUCH UNITS OF CARIBE RESORT CONDOMINIUM, AS BUILT.

*Henry Morris*  
ALABAMA REGISTRATION NUMBER 2865  
4/16/58  
DATE



HENRY MORRIS & ASSOC., INC.  
ARCHITECTURE & ENVIRONMENTAL DESIGN

20 N. BALANCE  
FERRISDALE, ALA.  
205-453-4811  
FAX 205-453-4811

CARIBE RESORT  
ORANGE BEACH, ALABAMA

AS BUILT  
DATE 4/16/58  
REVISIONS

UNIT AND REVERSED  
SHEET

28



© HENRY MORRIS & ASSOCIATES, INC.