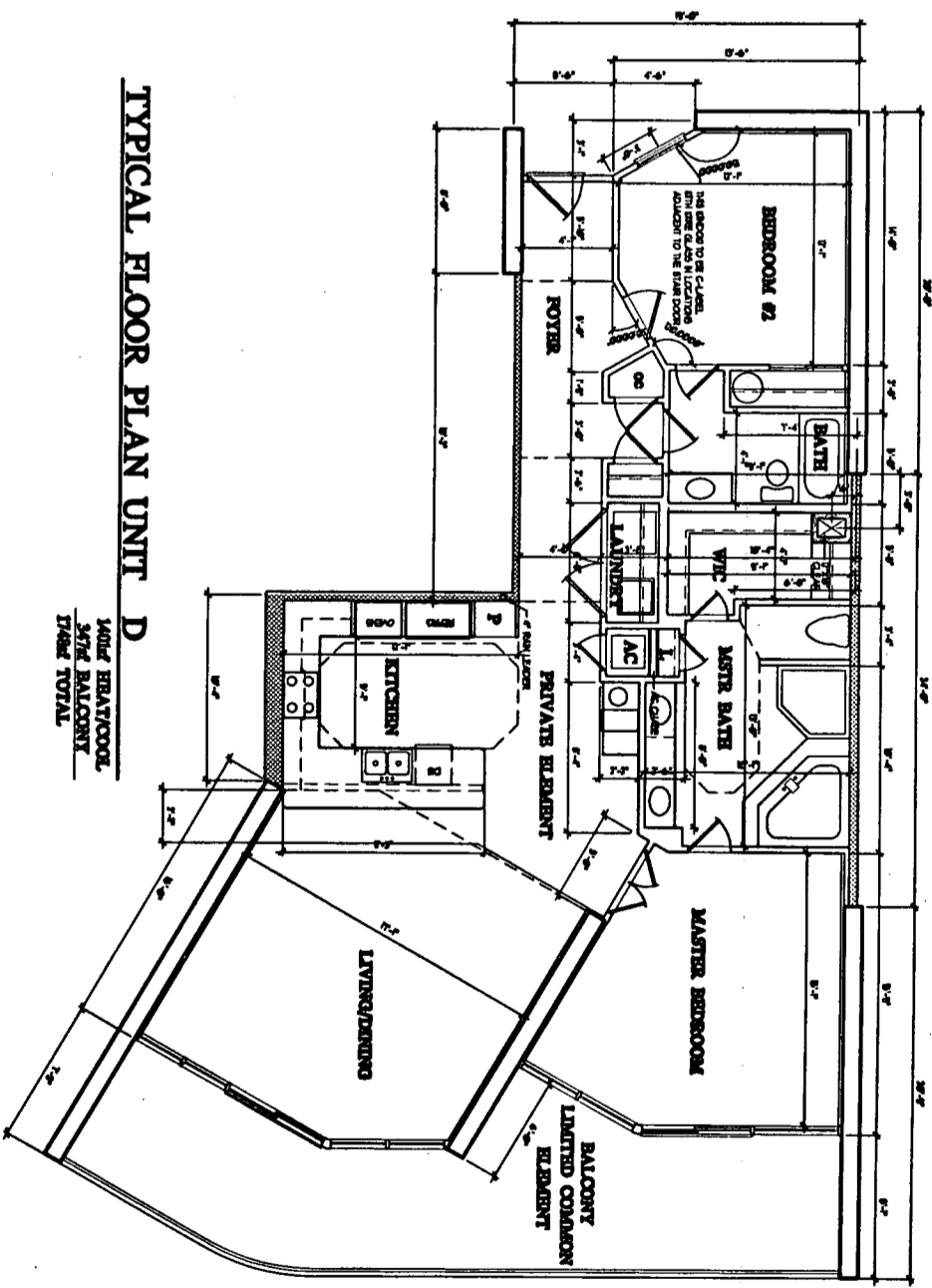


APP BK 22 19 01

THE UNDERSIGNED, HENRY MORRIS, A REGISTERED ARCHITECT IN THE STATE OF ALABAMA, REGISTRATION NUMBER 2865, PURSUANT TO SECTION 35-9A-209, CODE OF ALABAMA, 1975, HEREBY CERTIFIES THAT TO THE BEST OF HIS KNOWLEDGE, DRAWINGS CONSISTING OF PAGES 1 THROUGH 32 INCLUSIVE, ATTACHED TO AND MADE PART OF THE DECLARATION OF CONDOMINIUM OF CARIBE RESORT, A CONDOMINIUM, OR ANY INSTRUMENT REQUIRED BY SAID SECTION, FULLY AND ACCURATELY REPRESENT THE TRUE AND CORRECT DIMENSIONS AND APPROXIMATE DIMENSIONS IN SUFFICIENT DETAIL TO PRIVATE ELEMENTS COMPRISING SUCH UNITS OF CARIBE RESORT CONDOMINIUM, AS BUILT.

D. Morris
ALABAMA REGISTRATION NUMBER 2865
/s/ DME



TYPICAL FLOOR PLAN UNIT D

LAND REAR/COOR.
SITE BALCONY
TOTAL

NOTE:
ALL RESIDENTIAL UNIT BALCONIES ARE TO BE LIMITED COMMON ELEMENT.
ALL RESIDENTIAL UNITS ARE TO BE PRIVATE ELEMENT.
ALL OTHER AREAS TO BE COMMON ELEMENTS UNLESS OTHERWISE NOTED.

Sheet SAITS Page 20 of 23

HN

HENRY MORRIS & ASSOC., INC.
ARCHITECTURE & ENVIRONMENTAL DESIGN

30 N. PALMER
FORSYTH
FLORIDA 32611

680 68401
FAX 68401

CARIBE RESORT
ORANGE BEACH, ALABAMA

AS BY: GREGORY
OR: FOL
CHECKED: JAH
DATE: 4/14/82
ENGINEER:

SHEET
UNIT D

31
OF 32

© HENRY MORRIS & ASSOCIATES, INC.

