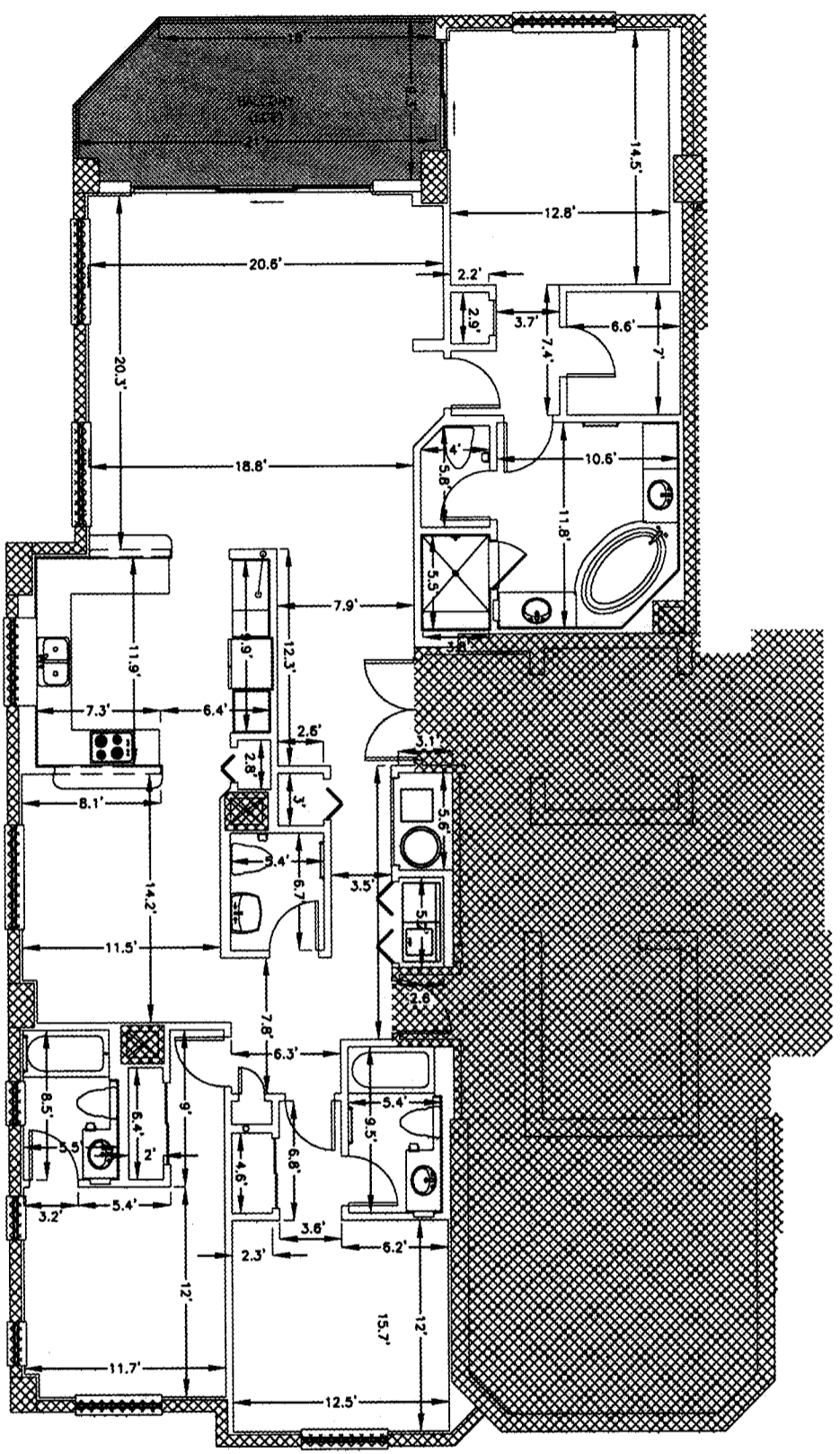


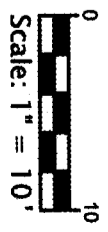
This drawing is the property of Hatch Mott MacDonald Florida, LLC, and may not be reproduced without written permission.

OR BK 5519 PG1277  
 Escambia County, Florida  
 INSTRUMENT 2004-299279



**INDIGO CONDOMINIUM  
 (PHASE I)  
 FLOORS 3 & 5 - 16  
 TYPICAL UNIT 01**

- 301-E
- 501-E
- 601-E
- 701-E
- 801-E
- 901-E
- 1001-E
- 1101-E
- 1201-E
- 1401-E
- 1501-E
- 1601-E



COMMON ELEMENT  
 LIMITED COMMON ELEMENT TO APARTMENT RESIDENTIAL UNIT

UNLESS ACCOMPANIED BY A SIGNED AND SEALED SHEET 1, THEN THIS DRAWING, SKETCH, PLAN, MAP OR DESCRIPTION IS FOR INFORMATIONAL PURPOSES ONLY AND IS NOT VALID.

 <b>Hatch Mott MacDonald</b>	Hatch Mott MacDonald Florida, LLC Architects Engineers Surveyors Certificate of Authorization: LA-0008783 5111 North 12th Avenue (228th) / P. O. Box 2518 (225-332518) Pensacola, Florida Telephone: (904) 544-8111 • Fax: (904) 444-4199	DESIGNED BY: G. EDWARDS	PROJECT SUPERVISOR: R.S. COLOCADO	DATE: 09-14-2004	H.M.M. PROJECT NUMBER: 201910
			PROJECT MANAGER: M. BONIFAY	LAST REVISED:	SHEET: <b>13 OF 23</b>

PROJECT: INDIGO, A CONDOMINIUM  
 PERDIDO KEY  
 ESCAMBIA COUNTY, FLORIDA  
 TITLE: PHASE I - BUILDING 1  
 FLOORS 3 & 5-16  
 TYPICAL UNIT 01  
 301-E, 501-E - 1601-E