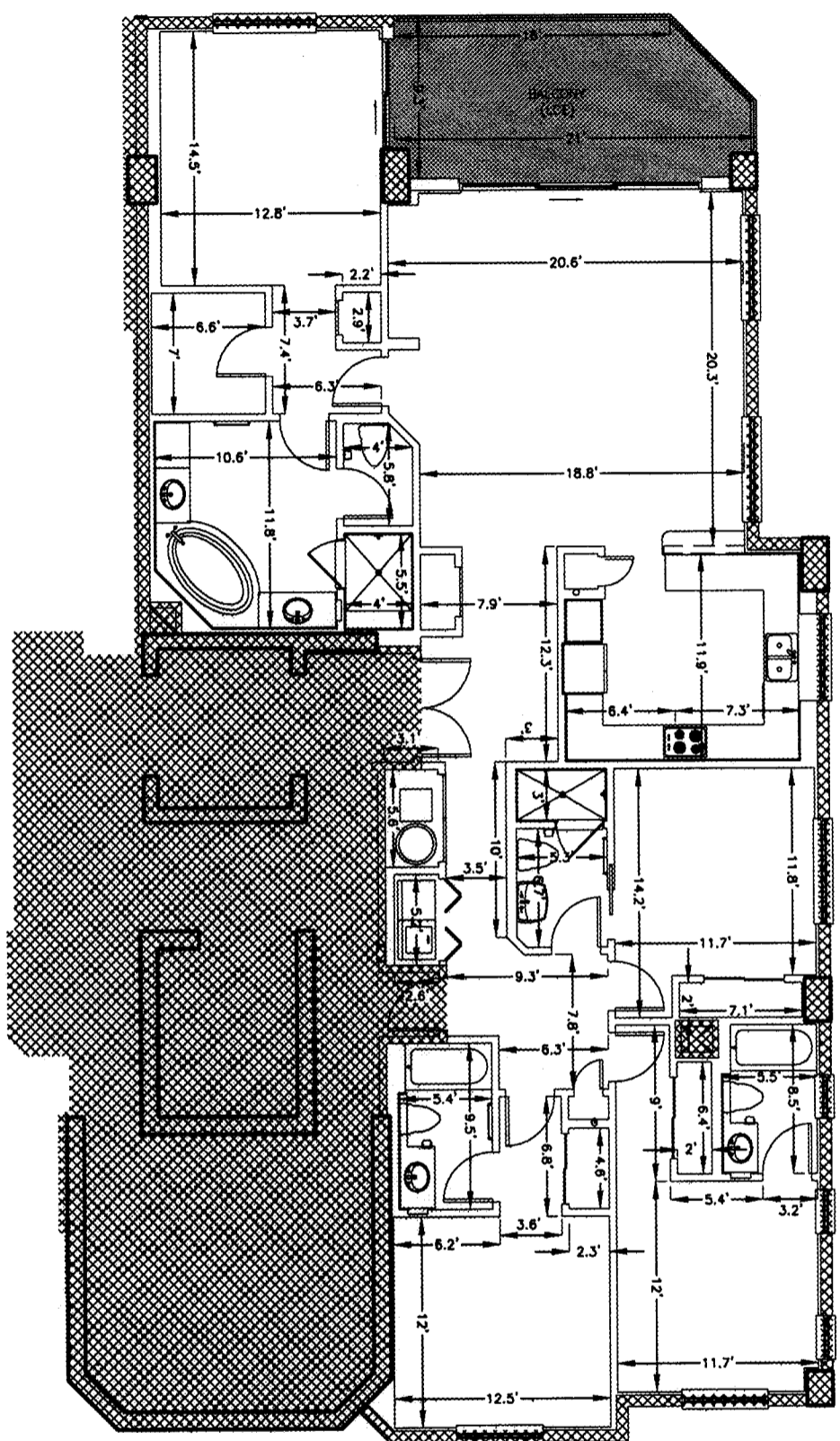
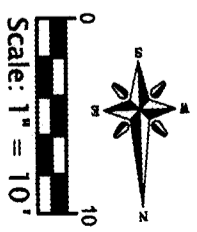


OR BK 5519 PG1283
 Escambia County, Florida
 INSTRUMENT 2004-299279



COMMON ELEMENT
 LIMITED COMMON ELEMENT TO APARTMENT RESIDENTIAL UNIT

UNLESS ACCOMPANIED BY A SIGNED AND SEALED SHEET 1, THEN THIS DRAWING, SKETCH, PLAT, MAP OR DESCRIPTION IS FOR INFORMATIONAL PURPOSES ONLY AND IS NOT VALID.



- 306-E
- 406-E
- 506-E
- 606-E
- 706-E
- 806-E
- 906-E
- 1006-E
- 1106-E
- 1206-E
- 1406-E
- 1506-E
- 1606-E
- 1706-E
- 1806-E
- 1906-E
- 2006-E

INDIGO CONDOMINIUM
 (PHASE I)
 FLOORS 3 - 20
 TYPICAL UNIT 06

Hatch Mott MacDonald
 Architects Engineers Surveyors
 5111 North 12th Avenue (25204) / P. O. Box 2816 (25213-2816)
 Pensacola, Florida
 Telephone: (904) 764-8011 • Fax: (904) 764-5188

DESIGNED BY: **G. EDWARDS**
 DRAWN BY:

PROJECT SURVEYOR: **R.S. COLOCADO**
 PROJECT MANAGER: **M. BONIFAY**

DATE: **09-14-2004**
 LAST REVISED:

H.M.M. PROJECT NUMBER: **201910**

PROJECT: **INDIGO, A CONDOMINIUM**
 PERDIDO KEY
 ESCAMBIA COUNTY, FLORIDA
 TITLE: **PHASE I - BUILDING 1**
 FLOORS 3-20
 TYPICAL UNIT 06
 306-E - 2006-E
 SHEET: **19 OF 23**