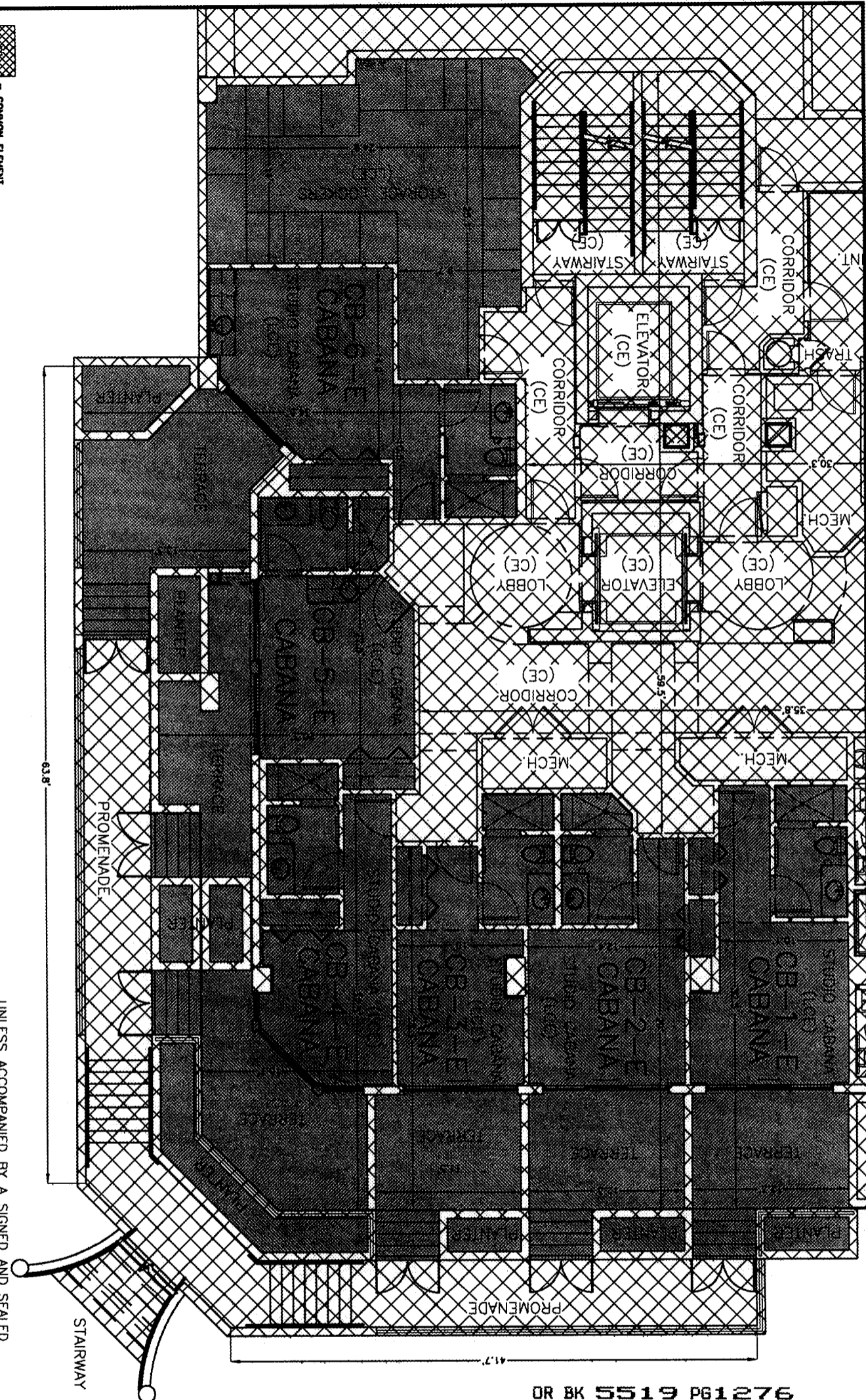
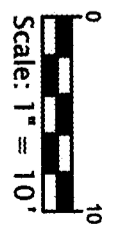


This drawing is the property of Hatch Mott MacDonald Florida, LLC, and may not be reproduced without written permission.



OR BK 5519 P61276  
Escambia County, Florida  
INSTRUMENT 2004-299279

**INDIGO CONDOMINIUM  
(PHASE 1)  
AMENITY LEVEL  
FLOOR 2  
CABANA UNIT DETAIL**



UNLESS ACCOMPANIED BY A SIGNED AND SEALED SHEET 1, THEN THIS DRAWING, SKETCH, PLAT, MAP OR DESCRIPTION IS FOR INFORMATIONAL PURPOSES ONLY AND IS NOT VALID.

COMMON ELEMENT  
LIMITED COMMON ELEMENT TO APARTMENT RESIDENTIAL UNIT



**Hatch Mott  
MacDonald**

Hatch Mott MacDonald Florida, LLC  
Architects Engineers Surveyors  
Certificate of Authorization: LA-0008783  
5111 North 72nd Avenue (2004) / P. O. Box 2510 (32513-2510)  
Panama City, Florida  
Telephone: (850) 944-0111 • Fax: (850) 944-4198

DESIGNED BY:  
DRAWN BY:

G. EDWARDS

PROJECT SUPERVISOR:  
PROJECT MANAGER:

R.S. COLOCADO  
M. BONIFAY

DATE: 09-14-2004  
LAST REVISED:

H.M.M.  
PROJECT NUMBER:

201910

PROJECT:	INDIGO, A CONDOMINIUM PERDIDO KEY ESCAMBIA COUNTY, FLORIDA
TITLE:	PHASE 1 - BUILDING 1 AMENITY LEVEL - FLOOR 2 CABANA UNIT DETAIL
SHEET:	12 OF 23