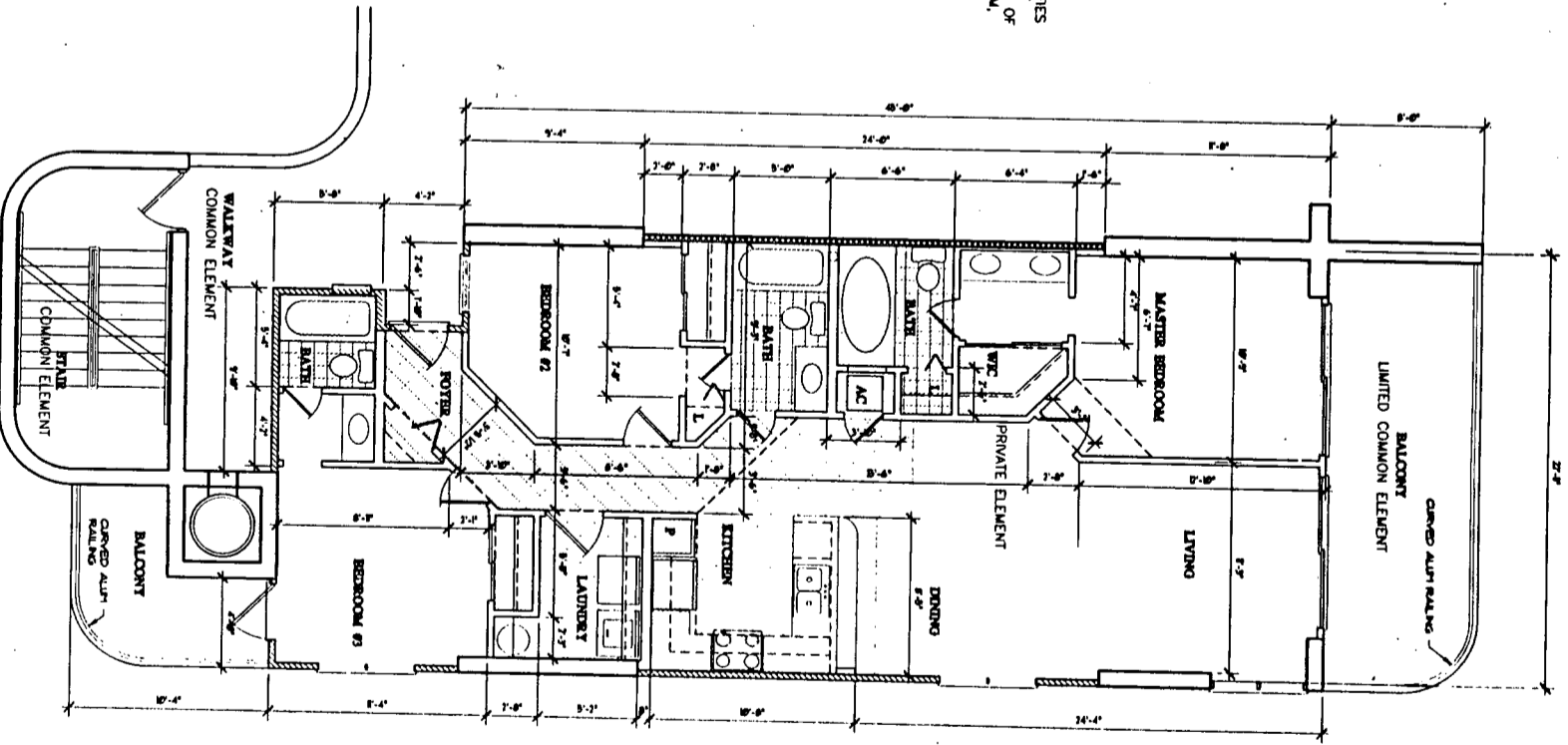


TYPICAL D UNIT PLAN
1/4"=1'-0" +/- 1/32" ft

THE UNDERSIGNED, HENRY NORRIS, A REGISTERED ARCHITECT IN THE STATE OF ALABAMA, REGISTRATION NUMBER 2665, PURSUANT TO SECTION 209, TITLE 20, CODE OF ALABAMA, 1975, HEREBY CERTIFIES THAT TO THE BEST OF HIS KNOWLEDGE, BELIEFS AND OPINIONS, THE DRAWINGS, SPECIFICATIONS AND SCHEDULES CONSISTING OF PAGES 1 THROUGH 11 INCLUSIVE, INCLUDING THE DECLARATION OF CONDOMINIUM OF TIDEWATER AND CHOLE PLAN, CONTAINS ALL INFORMATION REQUIRED BY SAID SECTION 209 AND ACCURATELY DEPICT THE LAYOUT, LOCATIONS, UNIT NUMBERS AND APPROXIMATE DIMENSIONS IN SUFFICIENT DETAIL TO IDENTIFY THE COMMON ELEMENTS, LIMITED COMMON ELEMENTS AND PRIVATE ELEMENTS COMPRISING SUCH UNITS OF TIDEWATER CONDOMINIUM, AS BUILT.

[Signature]
DATE 11/3/99
ALABAMA REGISTRATION NUMBER 2665



TYPICAL C UNIT PLAN
1/4"=1'-0" +/- 1/32" ft

APR 20 0033

HN
HENRY NORRIS & ASSOC., INC.
ARCHITECTURE & ENVIRONMENTAL DESIGN
30 N. PALAROX
PENSACOLA, FLORIDA 32501
904 432-4461
904 432-4461

TIDEWATER
CONDOMINIUMS
ORANGE BEACH, ALABAMA

JOB NO: 093111
CAD: TELL
CHECKED: JLN
DATE: 11/3/99
REVISION:

SHEET

11