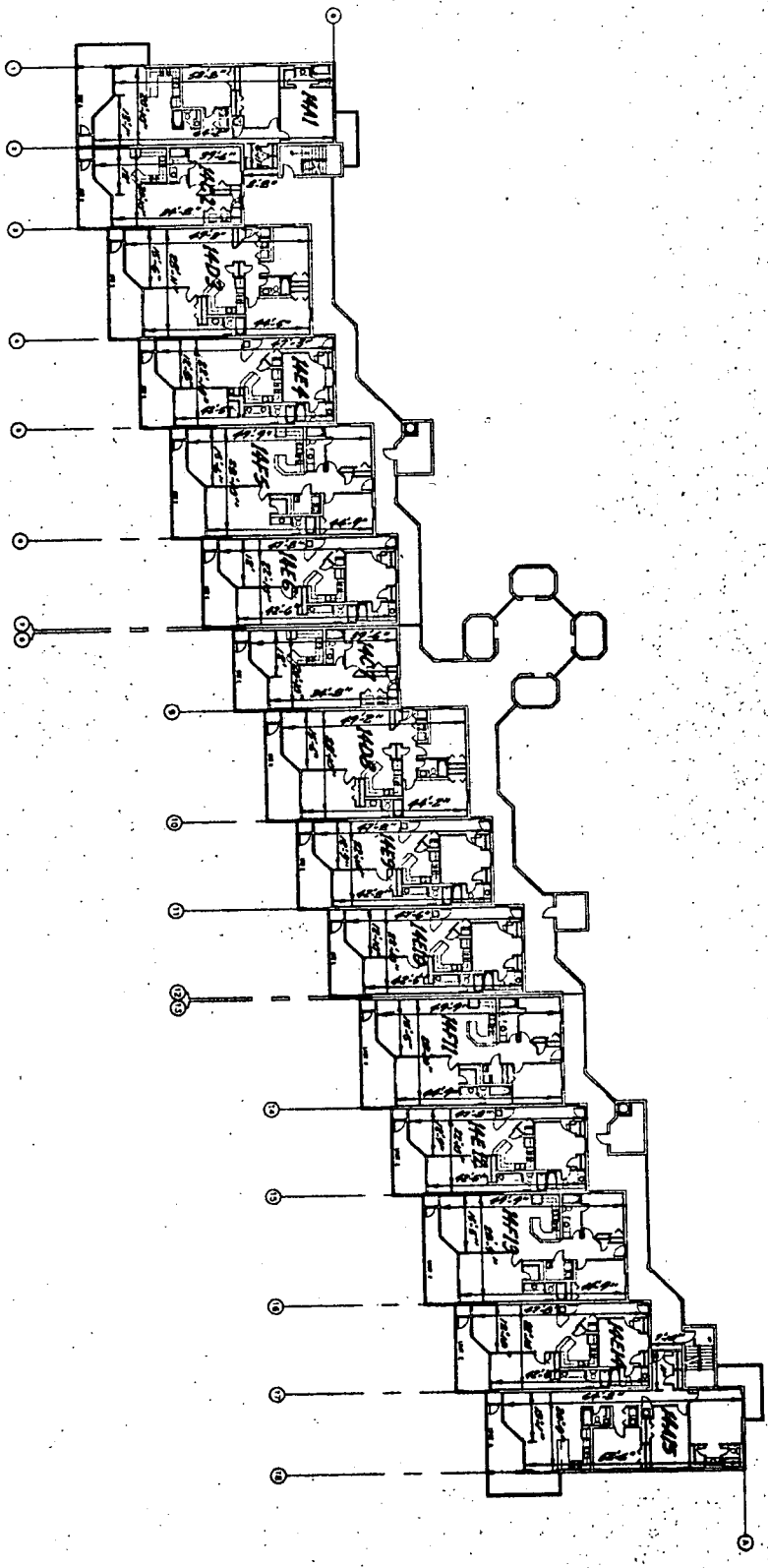


MS



FOURTEENTH FLOOR PLAN



I, MIRELL D. SPEAKS, A REGISTERED LAND SURVEYOR IN THE STATE OF ALABAMA, HEREBY CERTIFY THAT THE FOLLOWING DIMENSIONS FOR THE UNITS IN PHOENIX VII CONDOMINIUMS ARE TRUE AND CORRECT:
Mirell D. Speaks
ALABAMA REGISTRATION NO. 9137
SEPTEMBER 20, 1999

MIKELL D. SPEAKS & ASSOCIATES · CONSULTING ENGINEERS, INCORPORATED
732 OAK CIRCLE DRIVE WEST · MOBILE, ALABAMA
DATE: SEPTEMBER, 1999
SCALE: 1/8" = 1'-0"

PHOENIX VII
"AS BUILT"

019 FILE 148

BUSINESS RECORDS CORPORATION