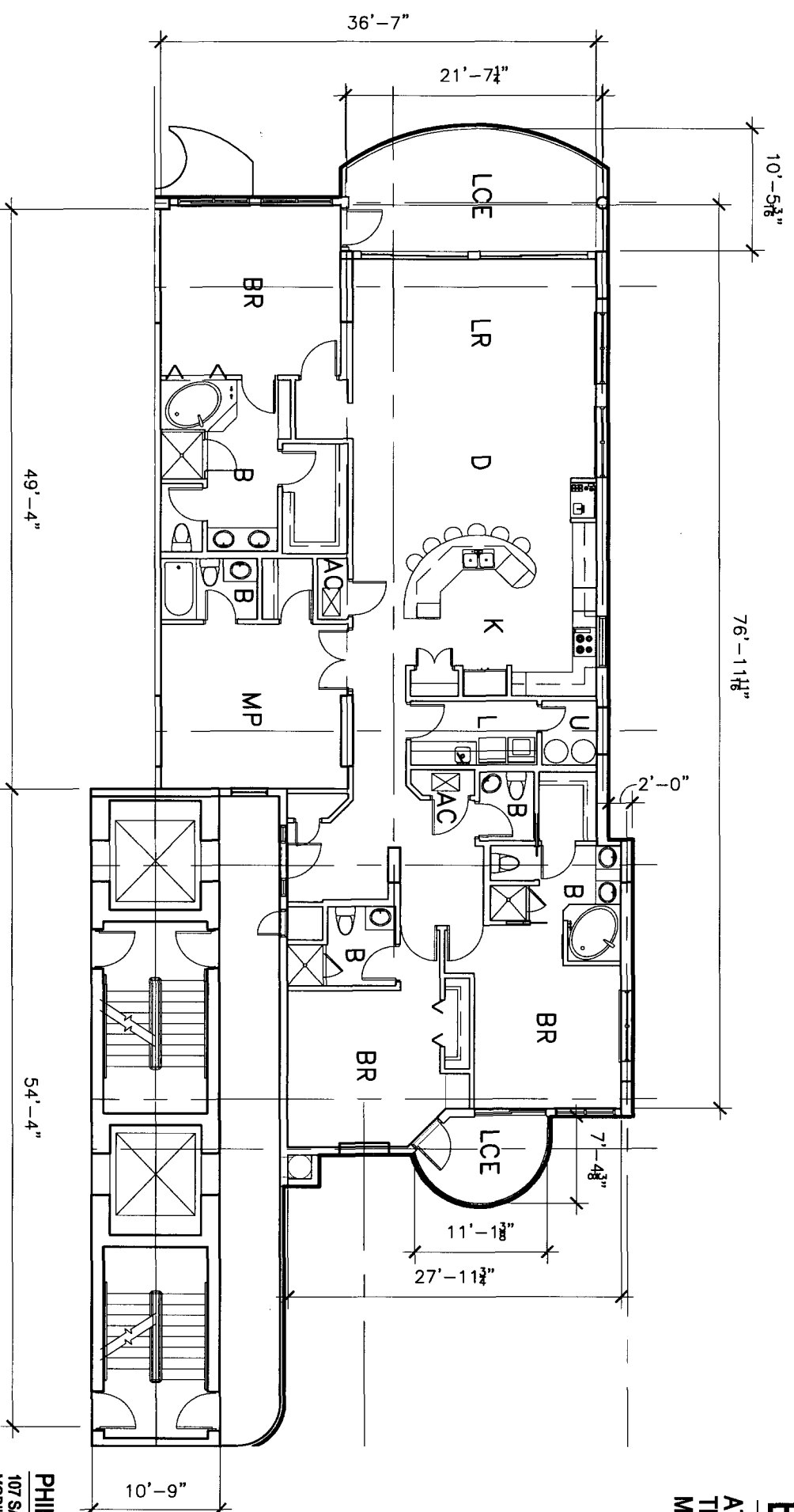


EXHIBIT "A"
 ATTACHED TO AND MADE A PART OF
 THE DECLARATION OF CONDOMINIUM OF
 MUSTIQUE, A CONDOMINIUM.

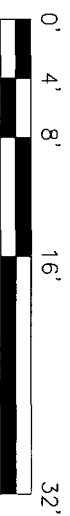


MUSTIQUE
 A CONDOMINIUM
 GULF SHORES, ALABAMA

PHILLIP N. OWENS & ASSOC., L.L.C.
 107 SAINT FRANCIS ST., SUITE 1702 PH (251) 652-2823
 MOBILE, ALABAMA 36602 FAX (251) 652-2824



CLUB LEVEL UNIT 2101 PLAN 2,511 SQ. FT.



ALL OF THE REAL PROPERTY DESCRIBED ON THESE PLANS
 ARE SUBJECT TO DEVELOPMENT RIGHTS AND SPECIAL
 DECLARANT RIGHTS AS SET OUT IN THE DECLARATION OF
 CONDOMINIUM OF MUSTIQUE, A CONDOMINIUM.

NOTES:

THIS IS TO CERTIFY THAT ALL OF THE CONDOMINIUM PROPERTY AND ALL STRUCTURES OF THE
 CONDOMINIUM ARE LOCATED WITHIN FLOOD ZONES "VE"(13), "VE"(12), "AE"(10), AND "AE"(11), AS
 DETERMINED BY THE U.S. DEPARTMENT OF HOUSING AND URBAN DEVELOPMENT. ALL OF THE REAL
 PROPERTY DESCRIBED IN THE PLANS IS SUBJECT TO SPECIAL DECLARANT RIGHTS AS SET OUT IN THE
 DECLARATION OF CONDOMINIUM OF MUSTIQUE, A CONDOMINIUM.

NOT TO SCALE

CDD-58

App. Bk. 25 P8 172