
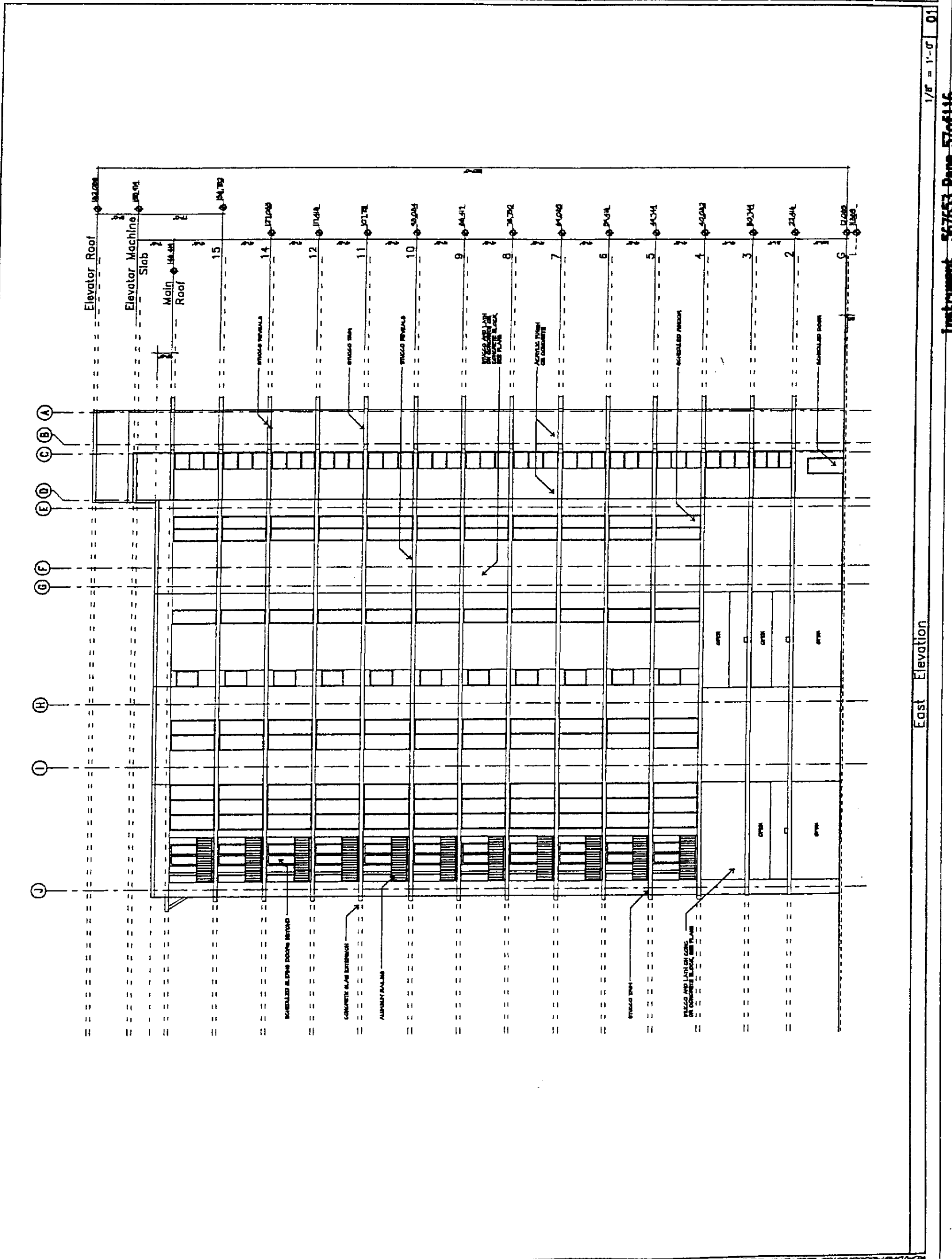


8421 02/08/15 ISSUED FOR PERMIT		Harsh ENGINEERS & ARCHITECTS 1411 Second Avenue South Birmingham, AL 35202 Phone: 205-948-1411 Fax: 205-948-1412	92000 PERDIDO PLACE  07/19/12 BY ARCH
		LEFT SIDE EAST ELEVATION A3.3 28 1/4	



1/8" = 1'-0" 01

East Elevation

Instrument 567653 Page 57 of 116

BOWEN/ABDO/KOHLER/LEWIS/DAWSON