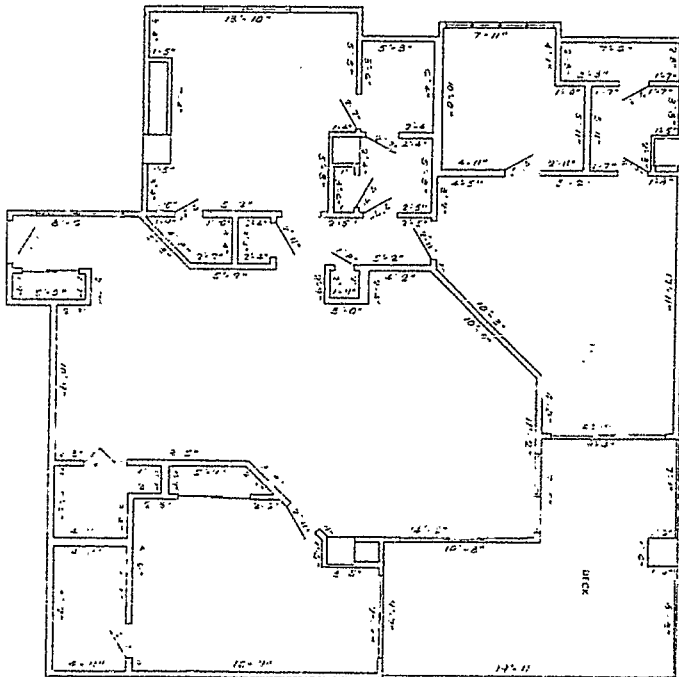
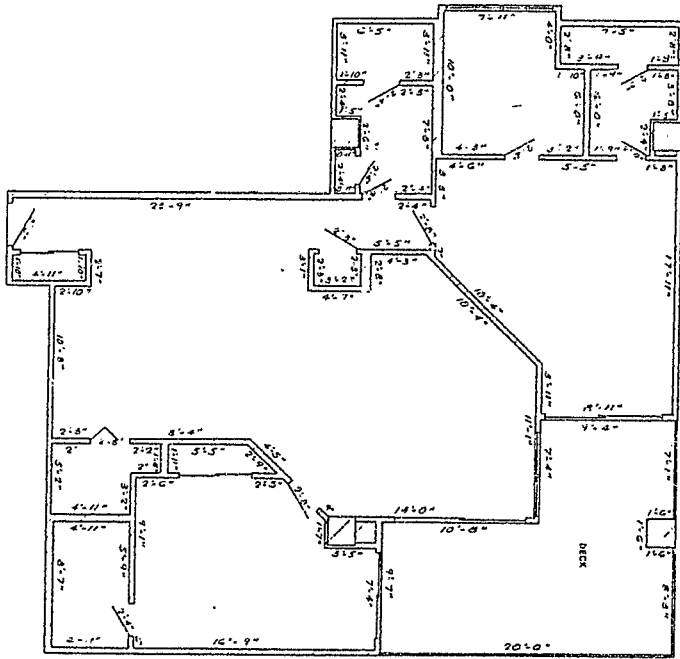


EXHIBIT A
(Page 4 of 14)

to

DECLARATION OF CONDOMINIUM
FOUR SEASONS OF ROMAR BEACH



TYPICAL UNITS

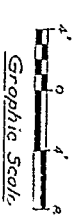
SCALE: 1/8" = 1'-0"

MISC. 59 ARE 1416

STATE OF ALABAMA
COUNTY OF BALDWIN

THE UNDERSIGNED, JAMES T. CHAMBERLAIN, A REGISTERED ENGINEER IN THE STATE OF ALABAMA, NUMBER 2101, PURSUANT TO SECTION 35-4-4, CODE OF ALABAMA, 1975, HEREBY CERTIFY THAT THE DRAWINGS CONSISTING OF PAGES 2 THROUGH 12 INCLUSIVE ATTACHED TO AND MADE A PART OF THE DECLARATION OF CONDOMINIUM OF FOUR SEASONS OF ROMAR BEACH, A CONDOMINIUM, FULLY AND ACCURATELY REPRESENT THE LAYOUT, LOCATIONS, UNIT NUMBERS AND DIMENSIONS IN SUFFICIENT DETAIL TO IDENTIFY THE COMMON ELEMENTS AND PRIVATE ELEMENTS COMPRISING SUCH UNITS OF FOUR SEASONS OF ROMAR BEACH, A CONDOMINIUM, AS BUILT.

James T. Chamberlain
REGISTERED ENGINEER
4-13-87
DATE



PHASE I
TYPICAL UNITS

FOUR SEASONS OF ROMAR BEACH
CONDOMINIUM

DESIGNED BY	GRAPHIC DESIGN, ALABAMA
DRAWN BY	JOHN SURRY, INC.
DATE	APRIL 1987
PROJECT	FOUR SEASONS OF ROMAR BEACH, AL 36551
SCALE	AS SHOWN

- CROSS HATCHED AREA REPRESENTS COMMON ELEMENTS, NOT LIMITED COMMON ELEMENTS.
- NO CROSS HATCHED AREA REPRESENTS PRIVATE ELEMENTS.