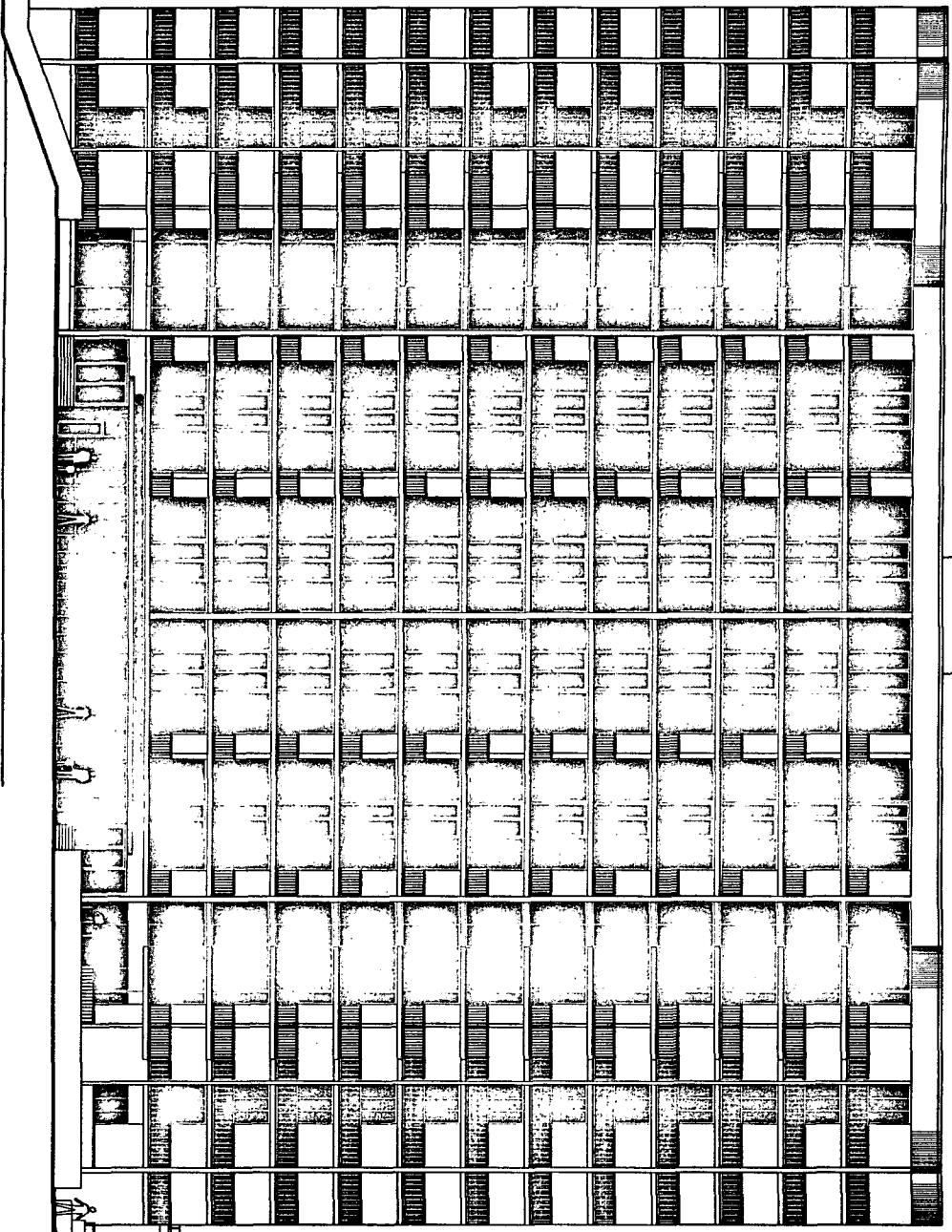


App. BK 22 19 50



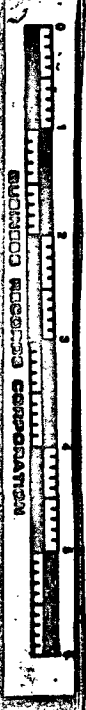
WEST ELEVATION

THE UNDERSIGNED, HENRY MORRIS, A REGISTERED ARCHITECT IN THE STATE OF ALABAMA, HEREBY CERTIFIES THAT THE DRAWINGS AND SPECIFICATIONS ATTACHED TO THESE PLANS ARE THE BEST OF HIS KNOWLEDGE, DRAWINGS CONSISTING OF PAGES 1 THROUGH 32 INCLUSIVE, ATTACHED TO AND MADE PART OF THE DECLARATION OF CONDOMINIUM OF CARIBE RESORT, A CONDOMINIUM, CONTAINS ALL INFORMATION REQUIRED BY SAID SECTION AND THAT HE HAS NOT BEEN ADVISED OF ANY CHANGES TO THE COMMON ELEMENTS, LIMITED COMMON ELEMENTS AND PRIVATE ELEMENTS COMPRISING SUCH UNITS OF CARIBE RESORT CONDOMINIUM, AS BUILT.

D. A. N.
 ALABAMA REGISTRATION NUMBER 2869
 DATE

GALV. MET. ROOF
 CONCRETE COLUMNS

© HENRY MORRIS & ASSOCIATES, INC.



Sheetmark S4175 Page 214 of 23



HENRY MORRIS & ASSOC., INC.

ARCHITECTURE & ENVIRONMENTAL DESIGN

30 N. PALM FOX
 PENSACOLA,
 FLORIDA 32501
 (904) 432-6011
 FAX 432-3811
 henry@hmad.com

CARIBE RESORT
 ORANGE BEACH, ALABAMA

DESIGNER: GMM/ST
 CHECKED: LHM
 DATE: 4/4/82
 REVISIONS:

WEST ELEVATION
 SHEET

20
 OF 23