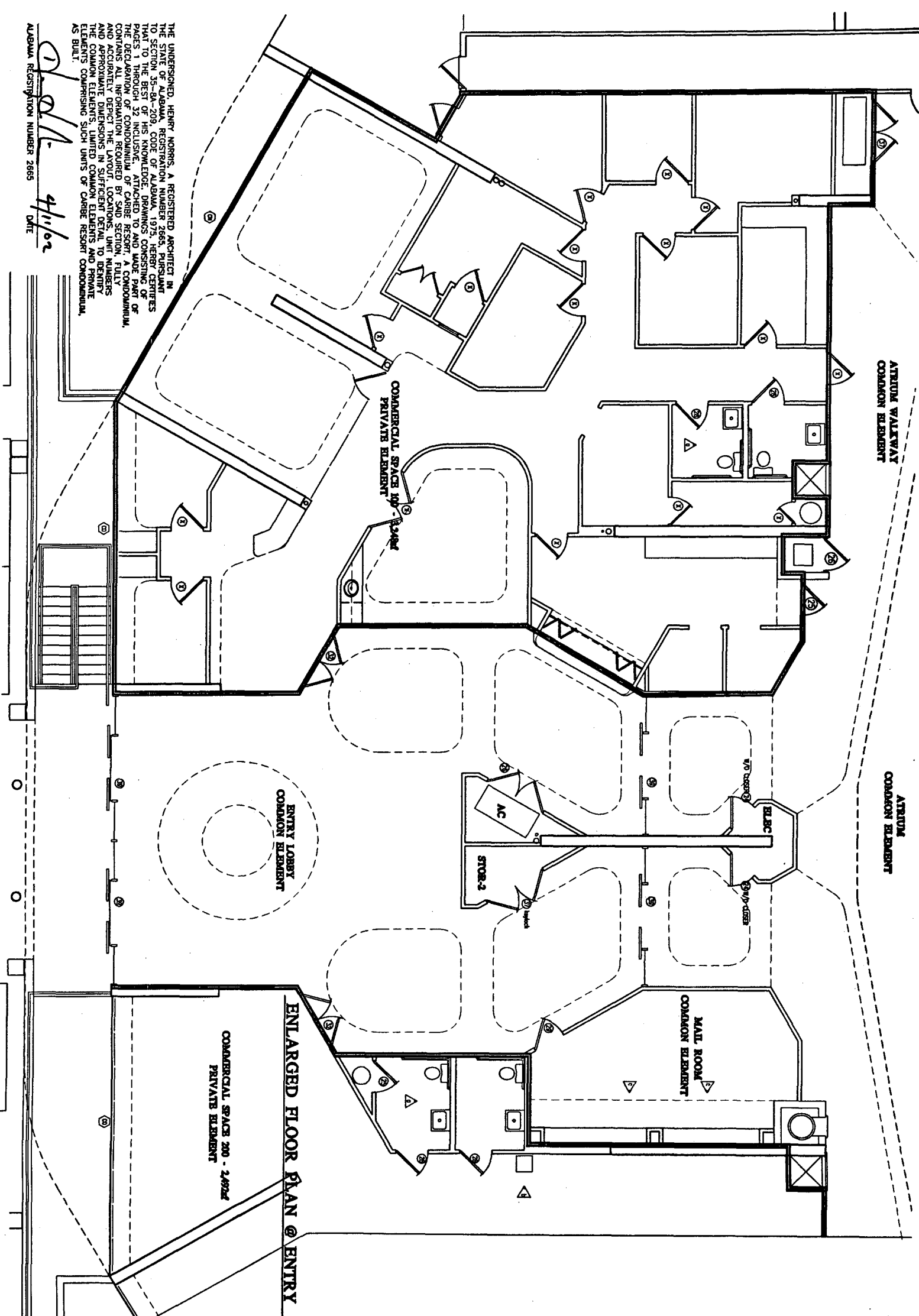


App. BK 22 PG 51



THE UNDERSIGNED, HENRY MORRIS, A REGISTERED ARCHITECT IN THE STATE OF ALABAMA, REGISTRATION NUMBER 2665, PURSUANT TO SECTION 35-8A-209, CODE OF ALABAMA, 1975, HERBY CERTIFIES THAT TO THE BEST OF HIS KNOWLEDGE, DRAWINGS CONSISTING OF PAGES 1 THROUGH 32 INCLUSIVE, ATTACHED TO AND MADE PART OF THIS APPLICATION OF RECORD, REMOVED BY SAID RESORT, A CONDOMINIUM, CO. DURING A PERIOD OF CONSTRUCTION, ARE TRUE AND CORRECT AND ACCURATELY DEPICT THE LAYOUT, LOCATIONS, UNIT MEASUREMENTS AND APPROXIMATE DIMENSIONS IN SUFFICIENT DETAIL TO DEFINE THE COMMON ELEMENTS, LIMITED COMMON ELEMENTS AND PRIVATE ELEMENTS COMPRISING SUCH UNITS OF CARIBE RESORT CONDOMINIUM, AS BUILT.

D. H. Morris
 DATE 4/11/62
 ALABAMA REGISTRATION NUMBER 2665

© HENRY MORRIS & ASSOCIATES, INC.

ENGINEER
 BUILDERS RESOURCES CORPORATION

Interior Suits Page 21



HENRY MORRIS & ASSOC., INC.

ARCHITECTURE & ENVIRONMENTAL DESIGN

30 N. PALMER FLORENCE, ALABAMA 36530

PHONE 452-0211 FAX 452-0211

CARIBE RESORT
 ORANGE BEACH, ALABAMA

AS NO. 9900071
 CD. 100L
 ORDER 1441
 DATE 4/6/62
 REVISION

FLOOR PLAN - ATRIUM
 SHEET